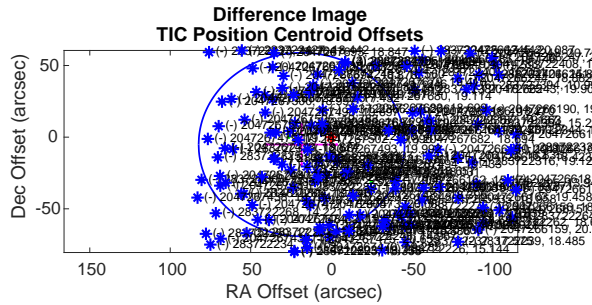
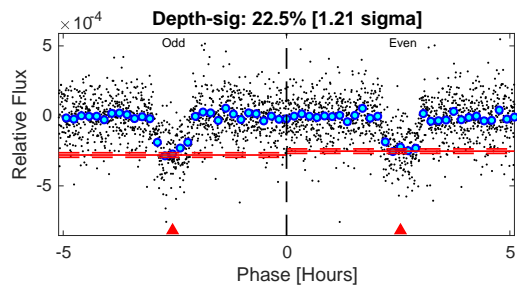
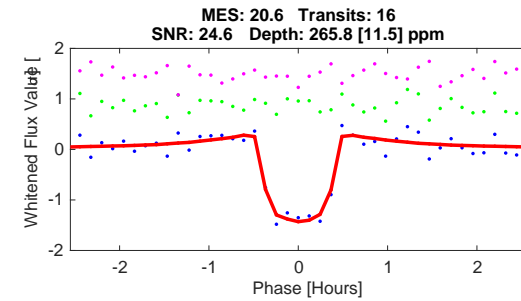
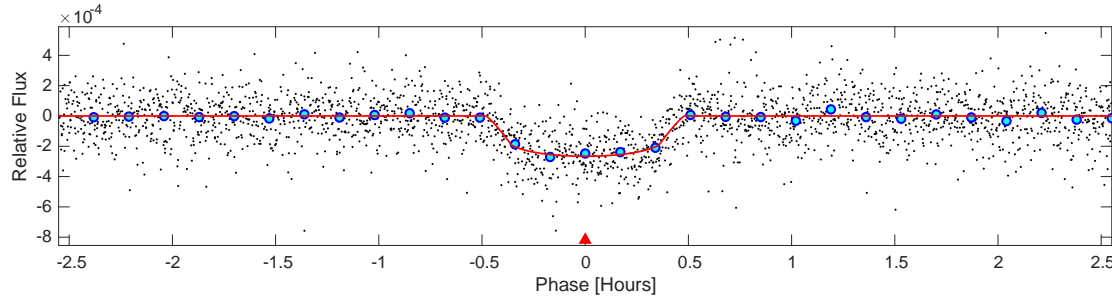
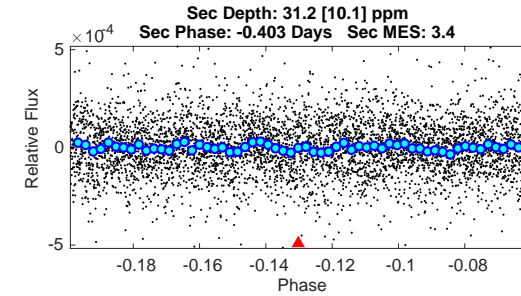
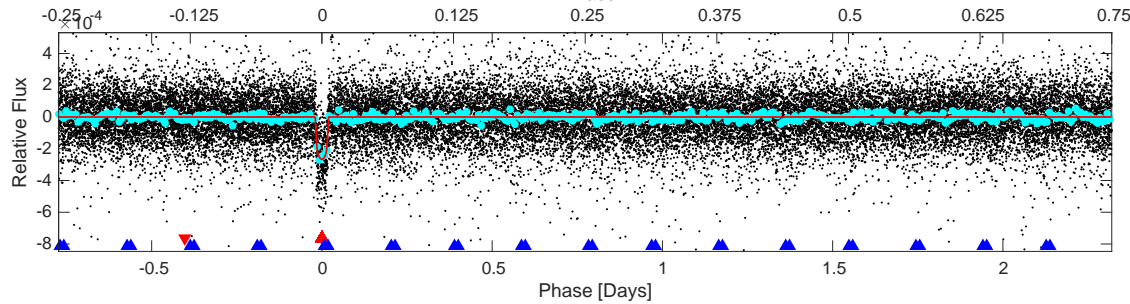
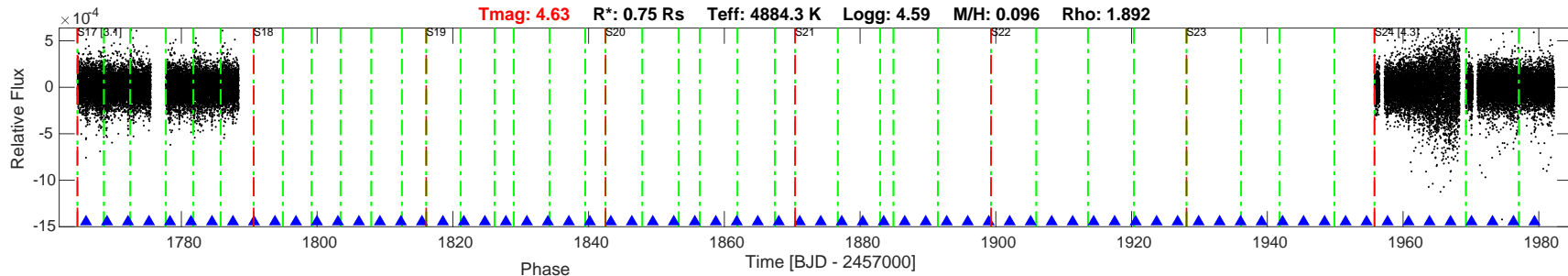


TIC: 283722336 Candidate: 1 of 2 Period: 3.093 d
TOI: 1469.01 Corr: 0.824

Tmag: 4.63 R*: 0.75 Rs Teff: 4884.3 K Logg: 4.59 M/H: 0.096 Rho: 1.892



DV Fit Results:
Period = 3.09293 [0.00001] d
Epoch = 1765.9548 [0.0004] BTJD
Rp/R* = 0.0148 [0.0072]
R*/R* = 28.07 [56.39]
a/R* = 0.10 [20.84]
Seff = 192.93 [38.30]
Teff = 951 [47] K
rho = 1.21 [0.59] Re
a = 0.0386 [0.0035] AU
Rho = 31.070 [187.240]
Ag = 17.40 [18.00] [0.91 sigma]
Tp = 3002 [772] K [2.65 sigma]

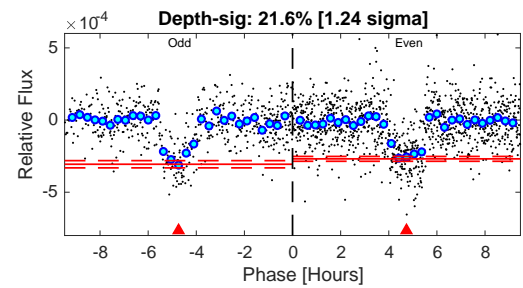
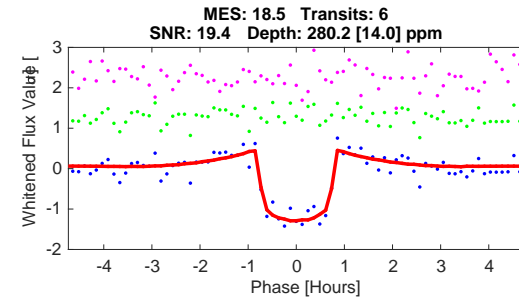
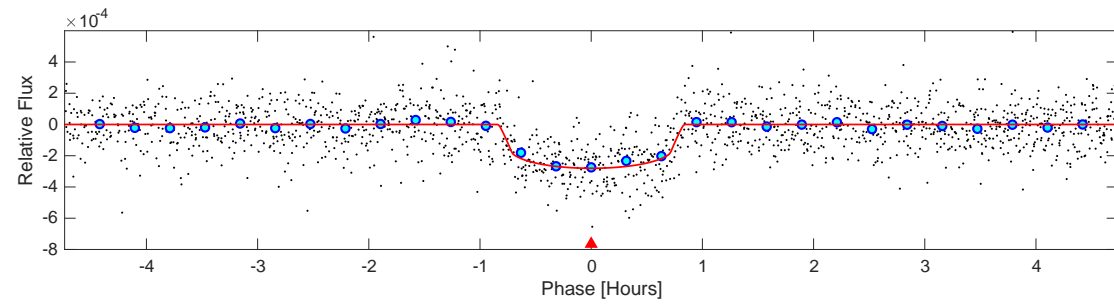
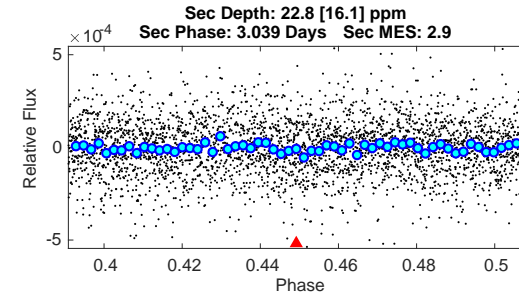
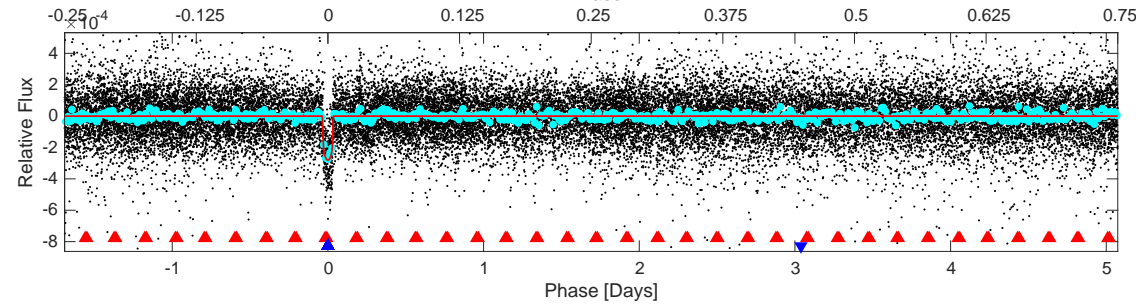
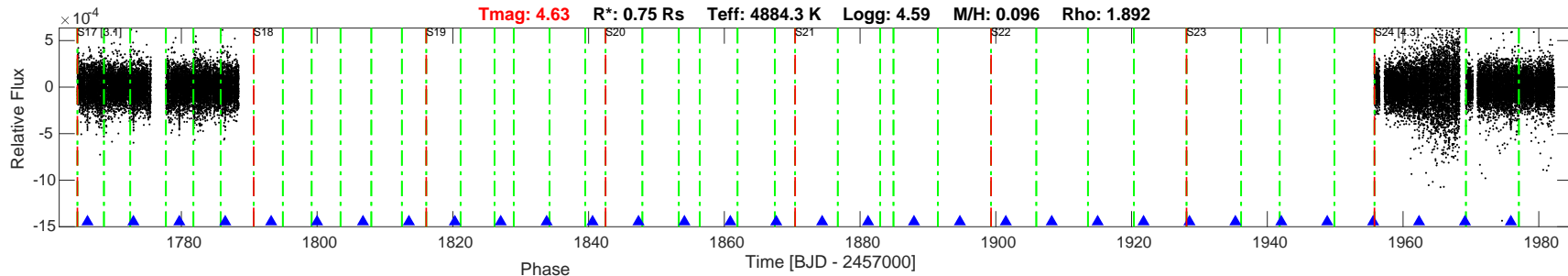
DV Diagnostic Results:
ShortPeriod-sig: N/A
LongPeriod-sig: 100.0% [49.15 sigma]
ModelChiSquare2-sig: 98.2%
ModelChiSquareGof-sig: 100.0%
Bootstrap-pfa: 1.30e-75
GhostDiagnostic-chr: N/A
OotOffset-rm: 9.346 arcsec [0.34 sigma]
TicOffset-rm: 19.047 arcsec [0.89 sigma]
OotOffset-tot: 2
TicOffset-tot: 2
DiffImageQuality-fgm: 0.00 [0/2]
DiffImageOverlap-fno: 1.00 [2/2]

Software Revision: spoc-5.0.5-20200728 -- Date Generated: 02-Aug-2020 17:08:56 Z

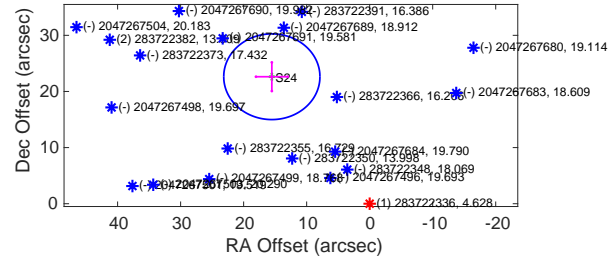
This Data Validation Report Summary was produced in the TESS Science Processing Operations Center Pipeline at NASA Ames Research Center

TIC: 283722336 Candidate: 2 of 2 Period: 6.765 d
TOI: 1469.02 Corr: 0.922

Tmag: 4.63 R*: 0.75 Rs Teff: 4884.3 K Logg: 4.59 M/H: 0.096 Rho: 1.892



Difference Image
TIC Position Centroid Offsets



DV Fit Results:

Period = 6.76508 [0.00005] d
Epoch = 1766.1696 [0.0007] BTJD
Rp/R* = 0.0158 [0.0056]
a/R* = 28.36 [42.99]
b = 0.53 [2.08]
Seff = 67.95 [13.49]
Teq = 732 [36] K
Rp = 1.29 [0.47] Re
a = 0.0650 [0.0060] AU
Rho = 6.698 [30.458]
Ag = 31.73 [32.30] [0.95 sigma]
Tp = 2687 [680] K [2.87 sigma]

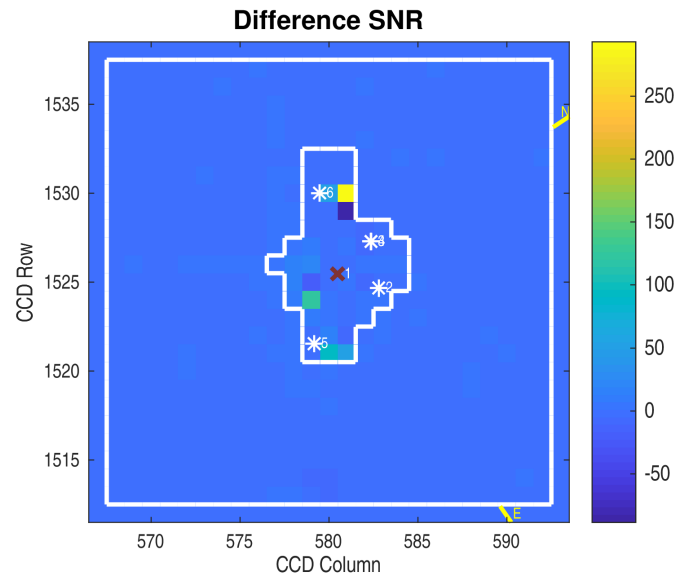
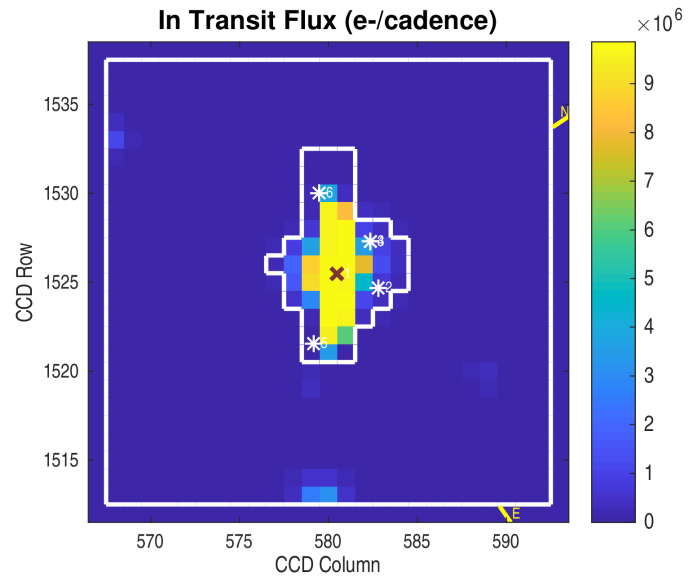
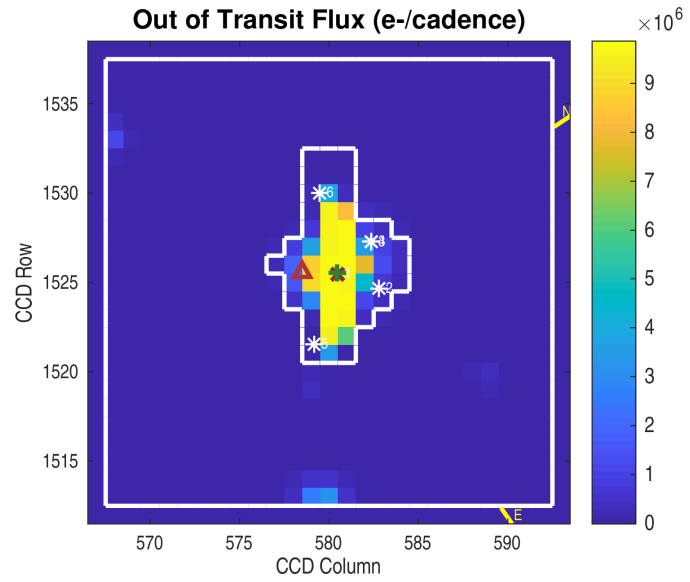
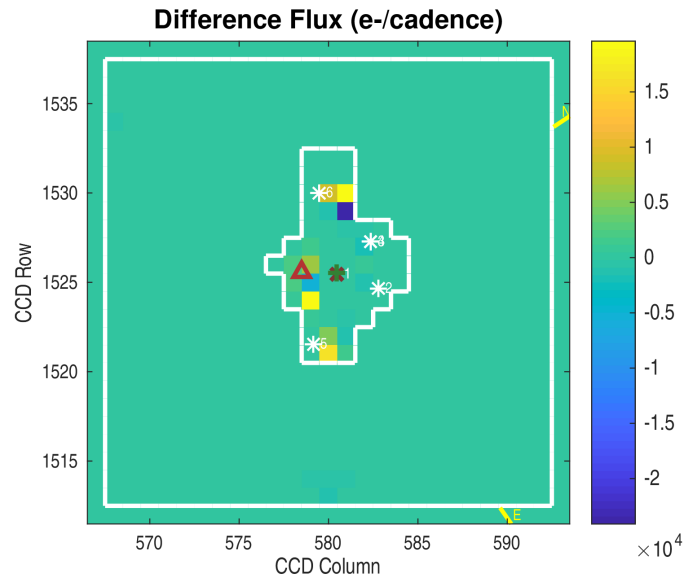
DV Diagnostic Results:

ShortPeriod-sig: 100.0% [49.15 sigma]
LongPeriod-sig: N/A
ModelChiSquare2-sig: 88.0%
ModelChiSquareGof-sig: 100.0%
Bootstrap-pfa: 1.83e-57
GhostDiagnostic-chr: N/A
OotOffset-rm: 27.770 arcsec [10.92 sigma]
TicOffset-rm: 27.439 arcsec [10.78 sigma]
OotOffset-tot: 1
TicOffset-tot: 1
DiffImageQuality-fgm: 0.00 [0/1]
DiffImageOverlap-fno: 1.00 [2/2]

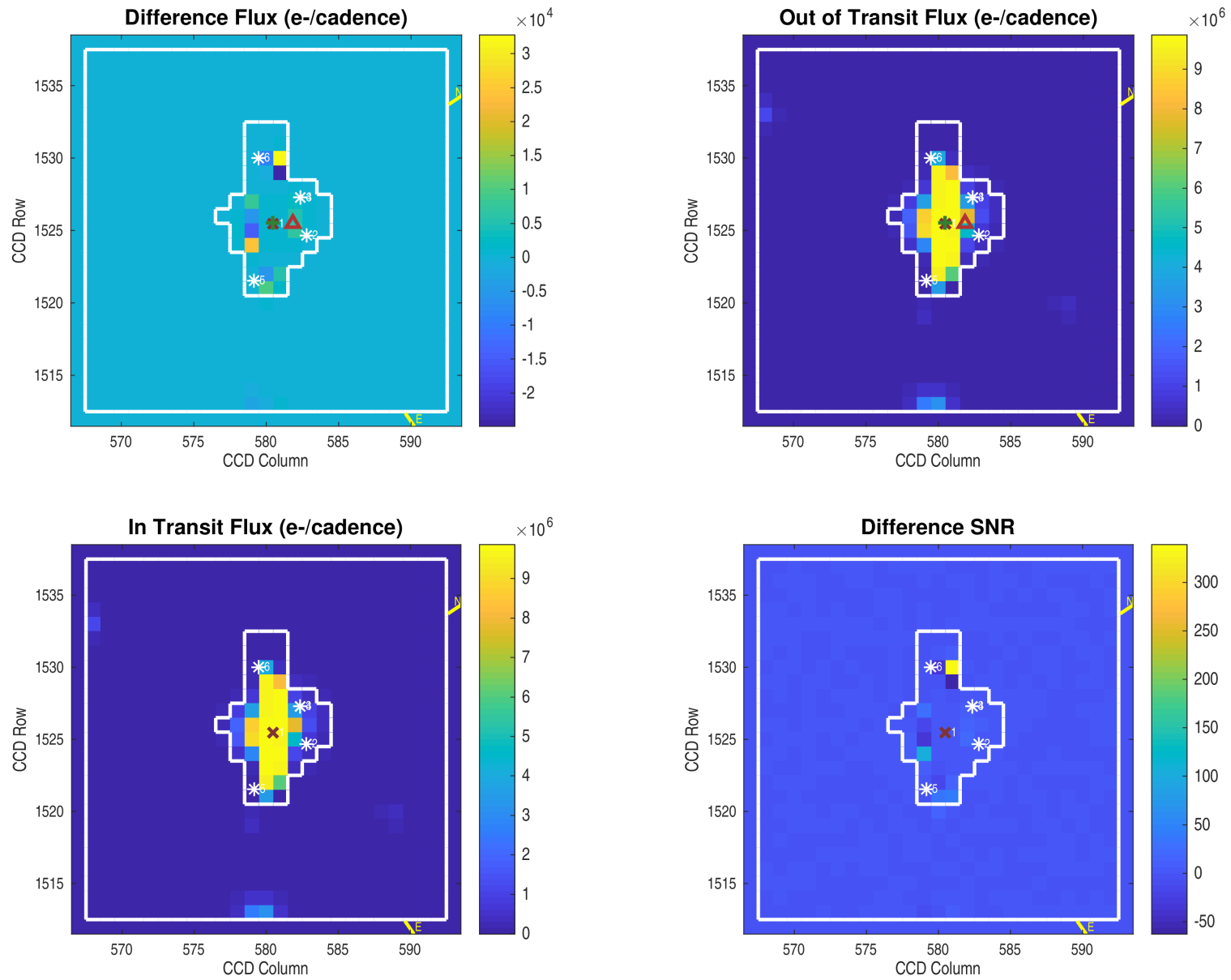
Software Revision: spoc-5.0.5-20200728 -- Date Generated: 02-Aug-2020 17:09:07 Z

This Data Validation Report Summary was produced in the TESS Science Processing Operations Center Pipeline at NASA Ames Research Center

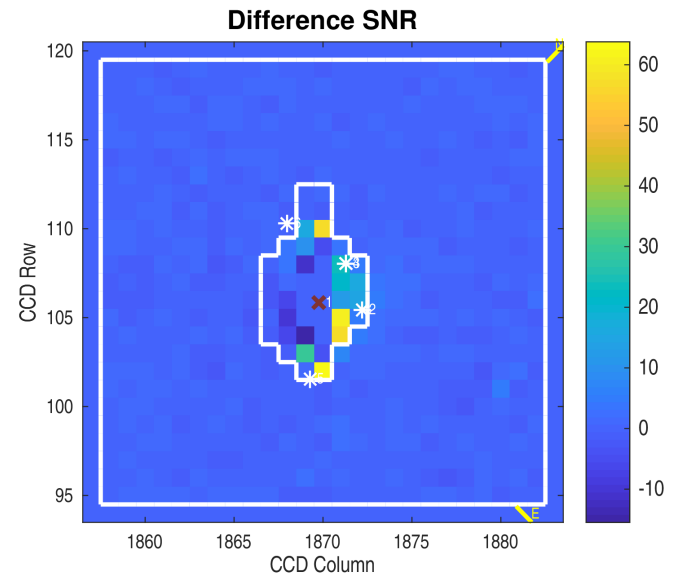
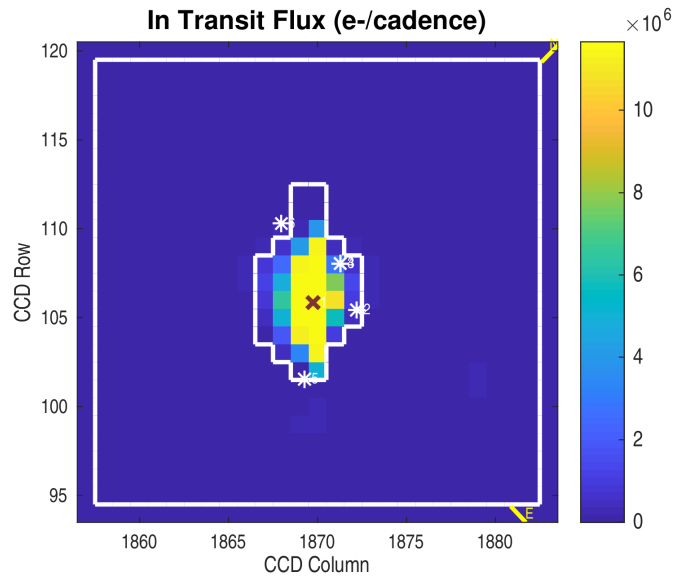
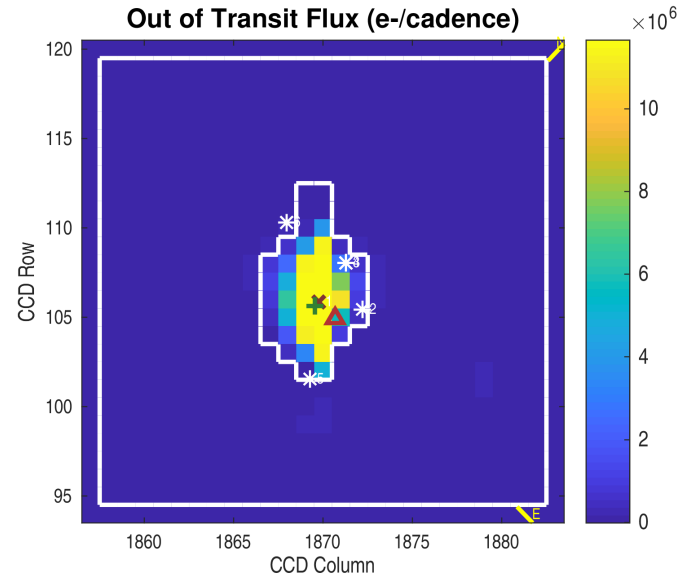
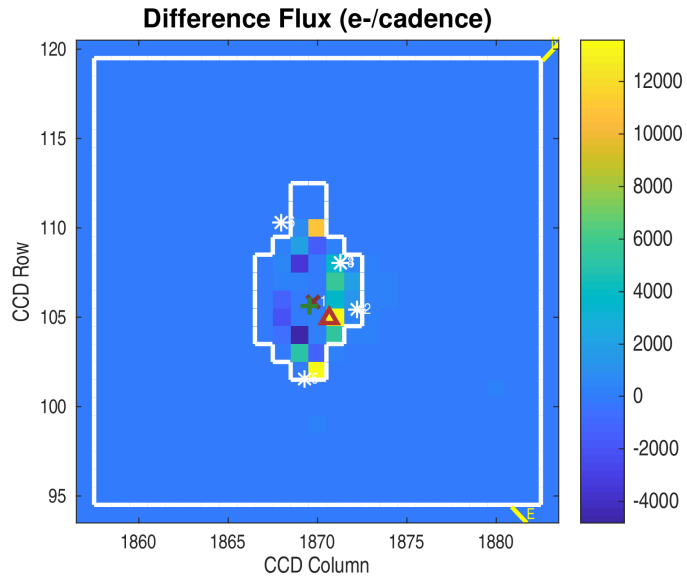
Planet Candidate 1 / Sector 24 / Target Pixel Table 242



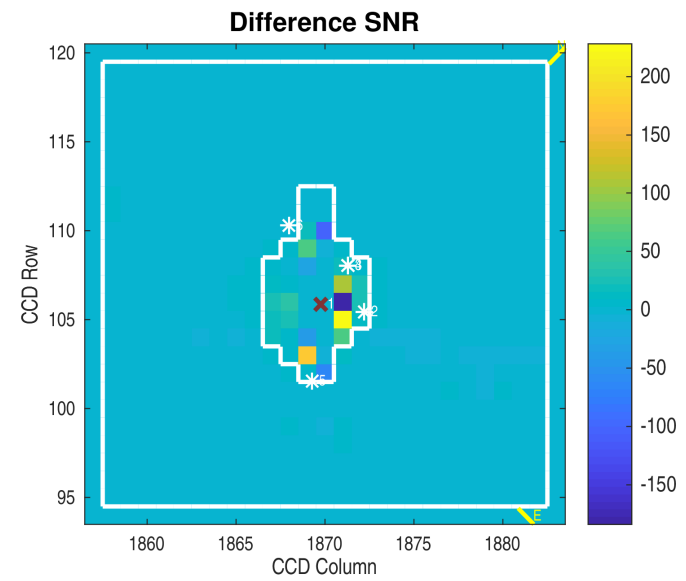
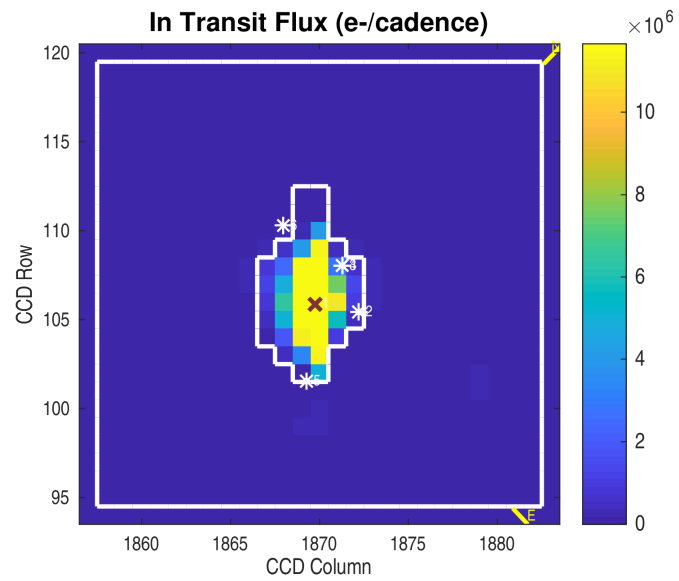
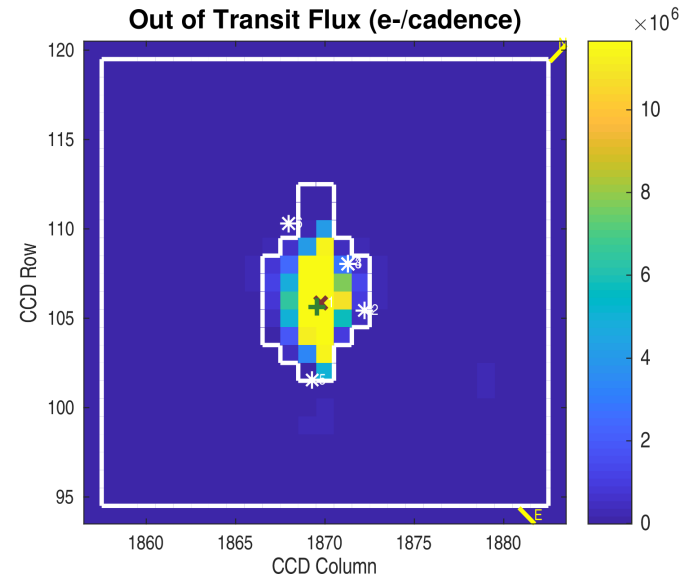
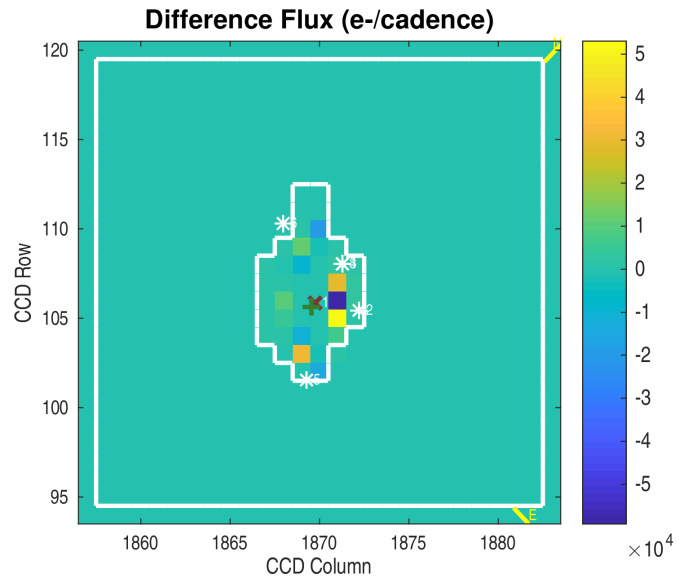
Planet Candidate 2 / Sector 24 / Target Pixel Table 242

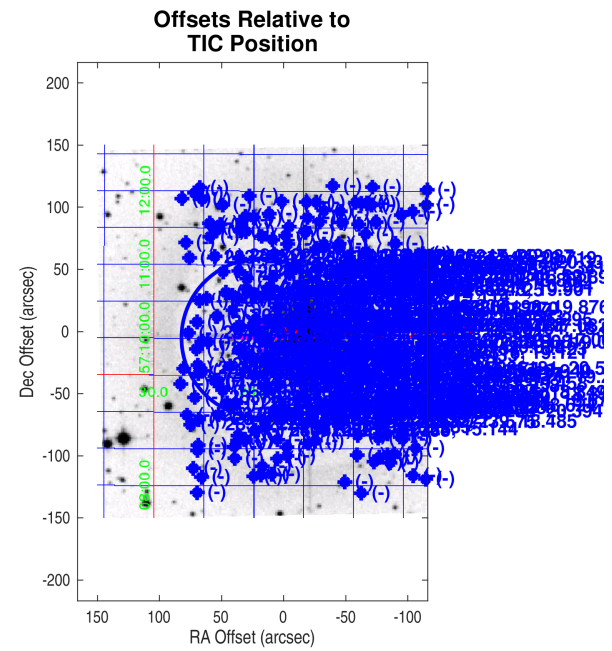
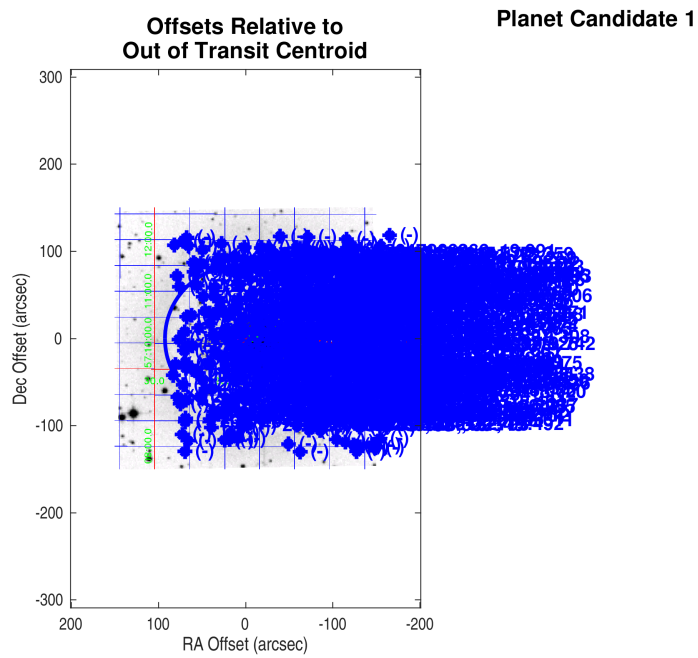
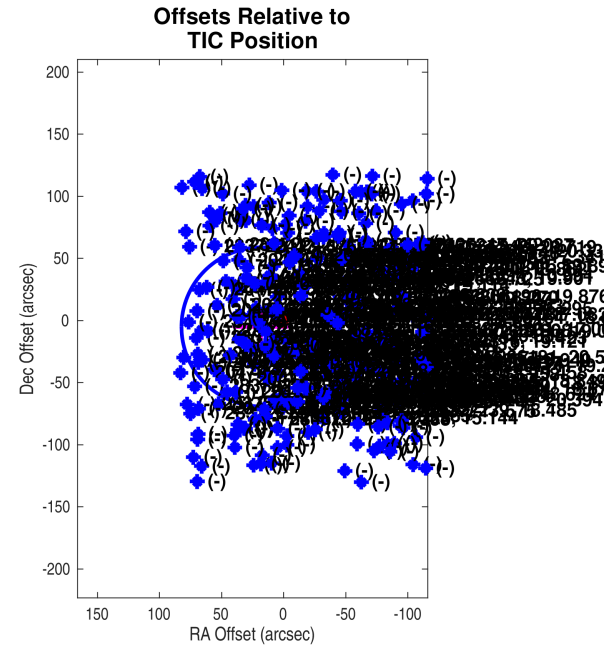
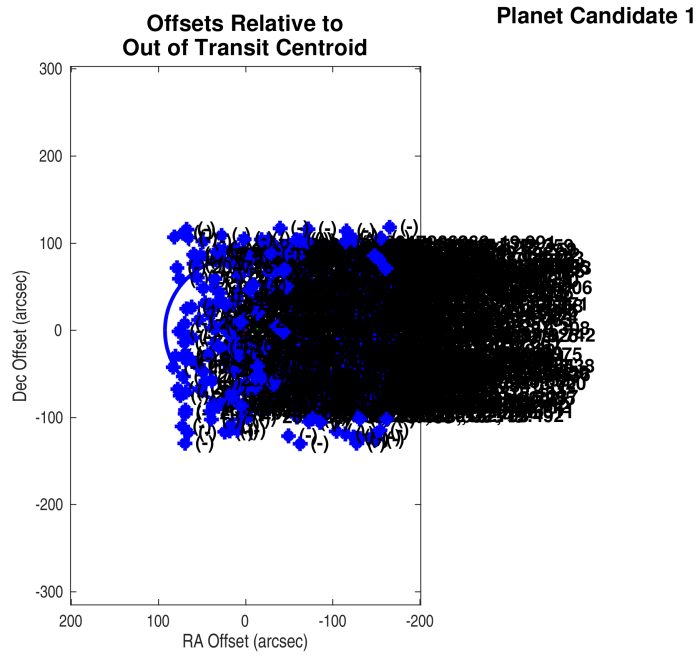


Planet Candidate 1 / Sector 17 / Target Pixel Table 176

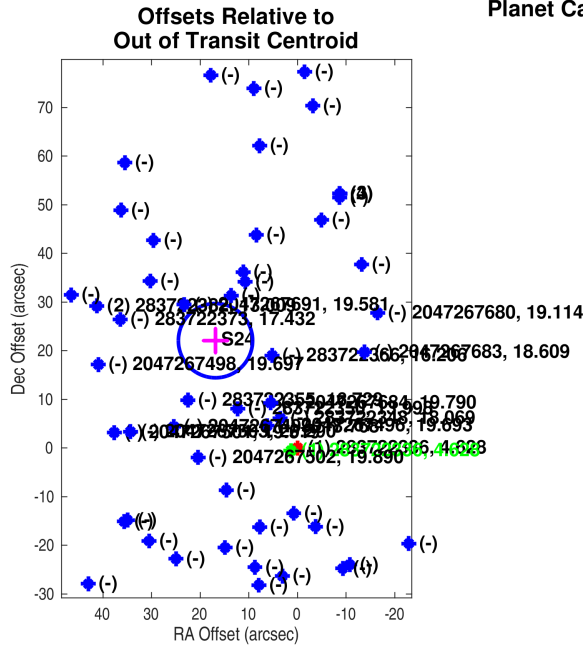


Planet Candidate 2 / Sector 17 / Target Pixel Table 176

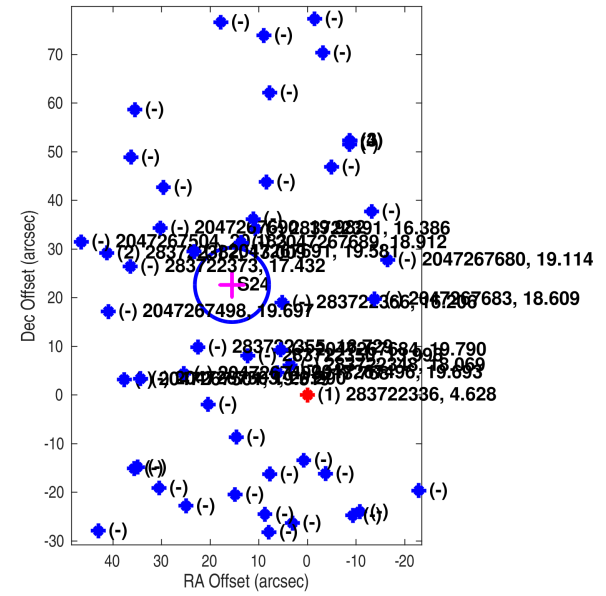




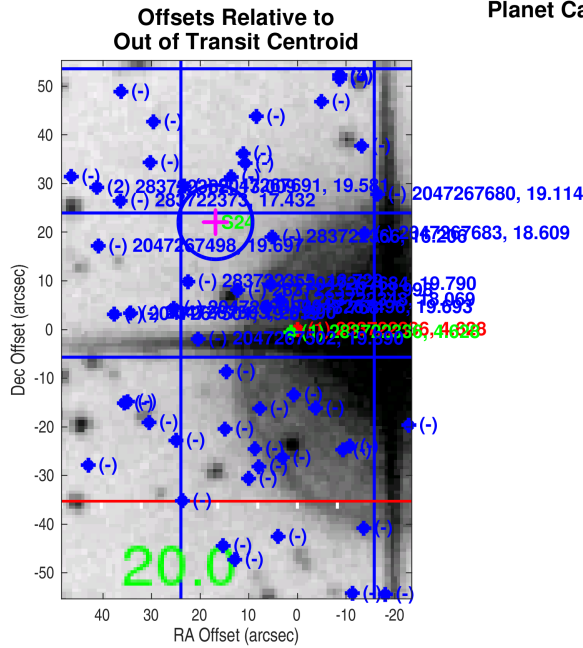
Planet Candidate 2



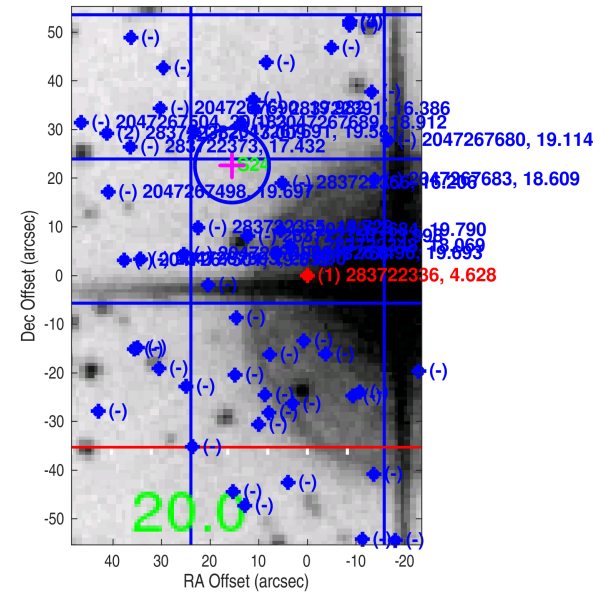
Offsets Relative to TIC Position

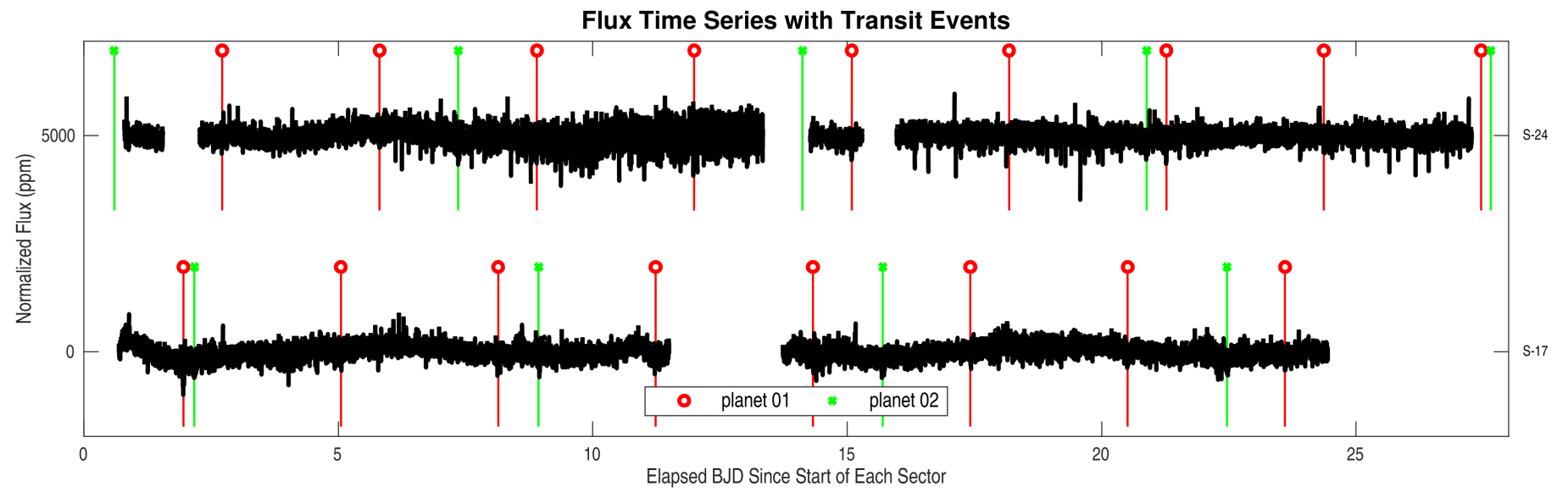
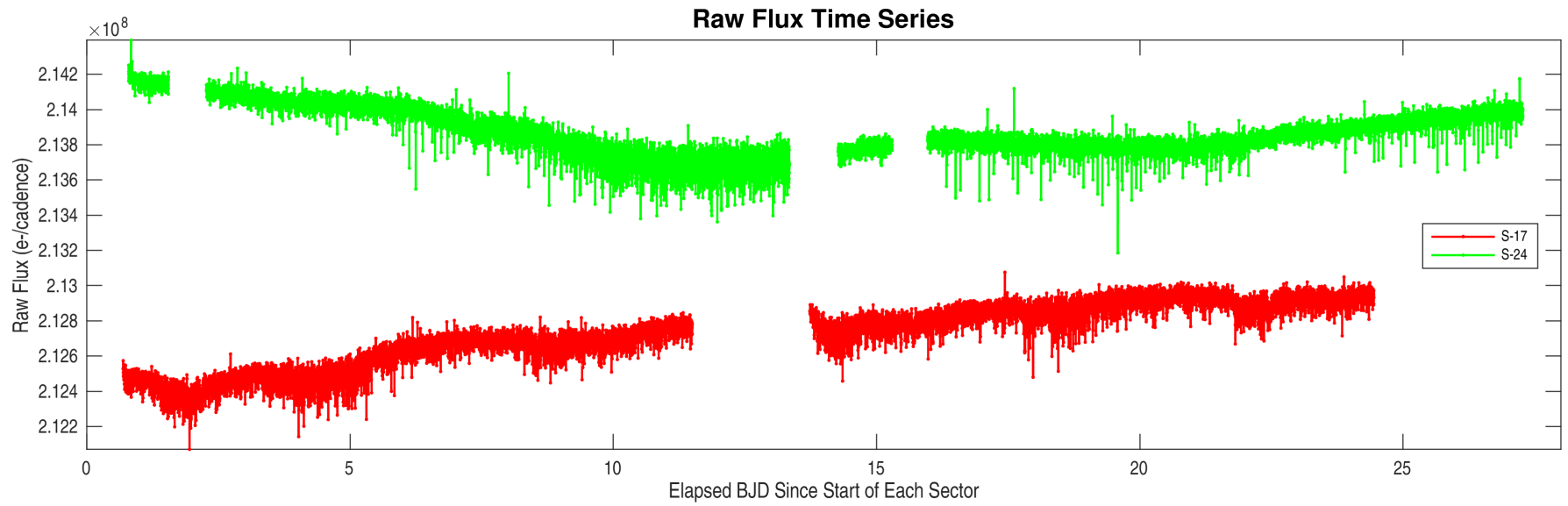


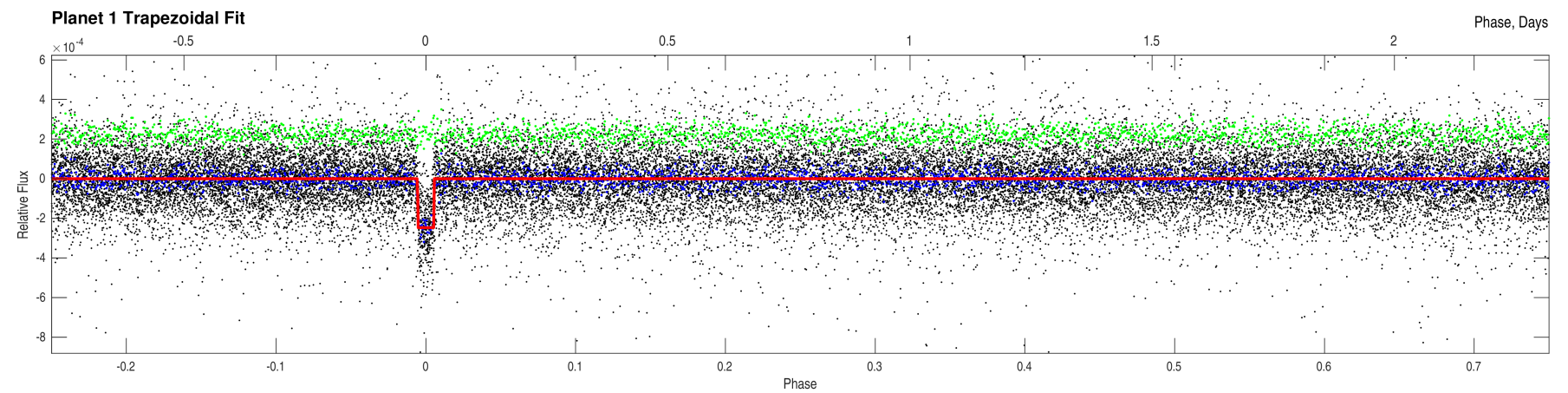
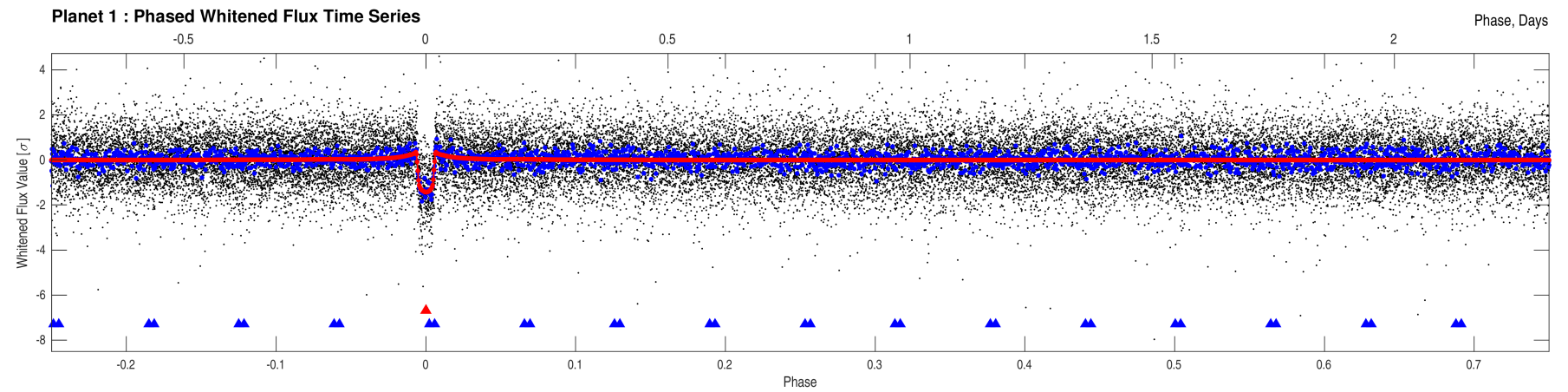
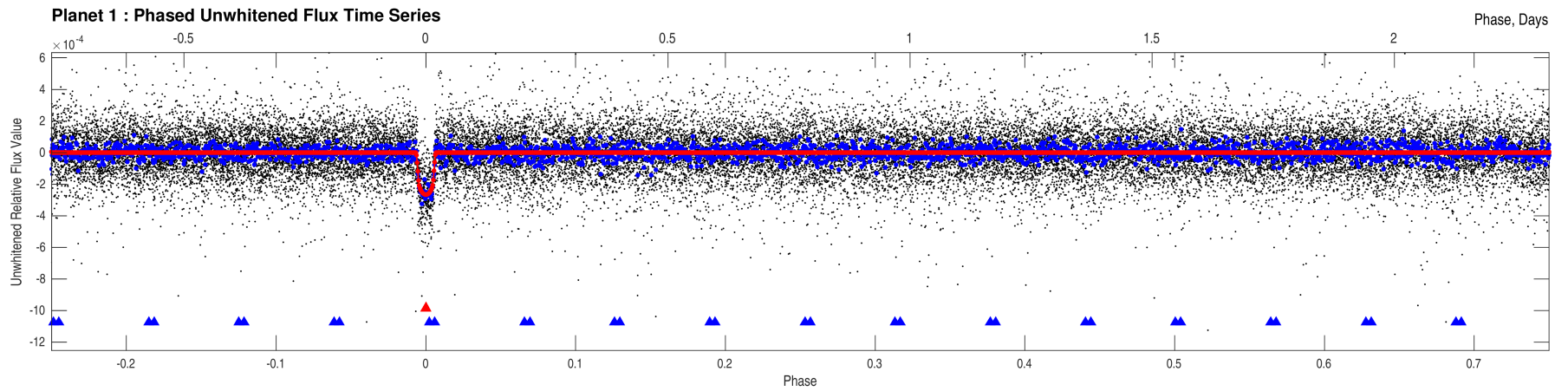
Planet Candidate 2

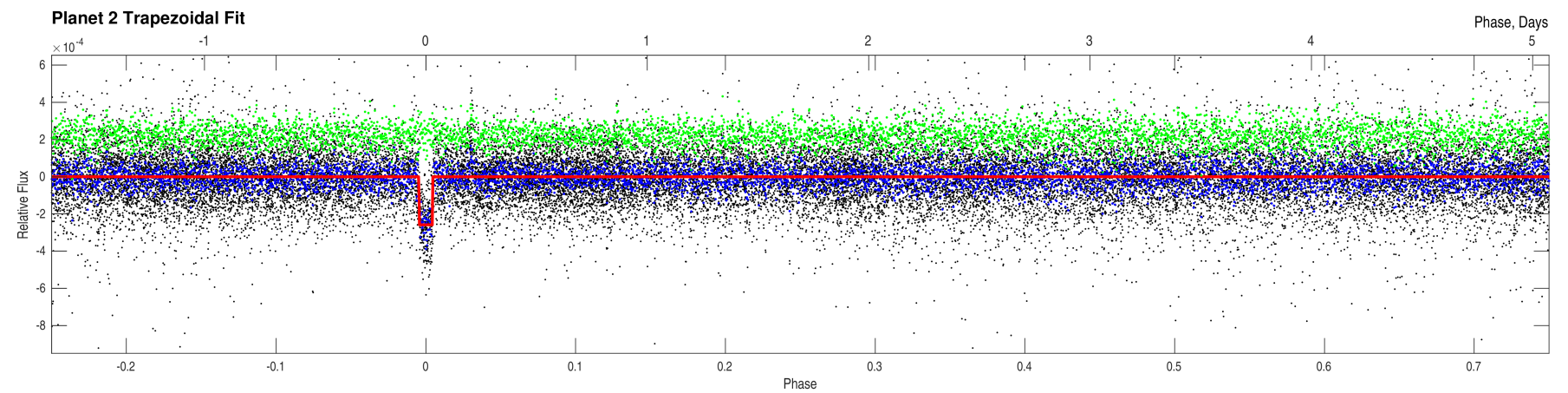
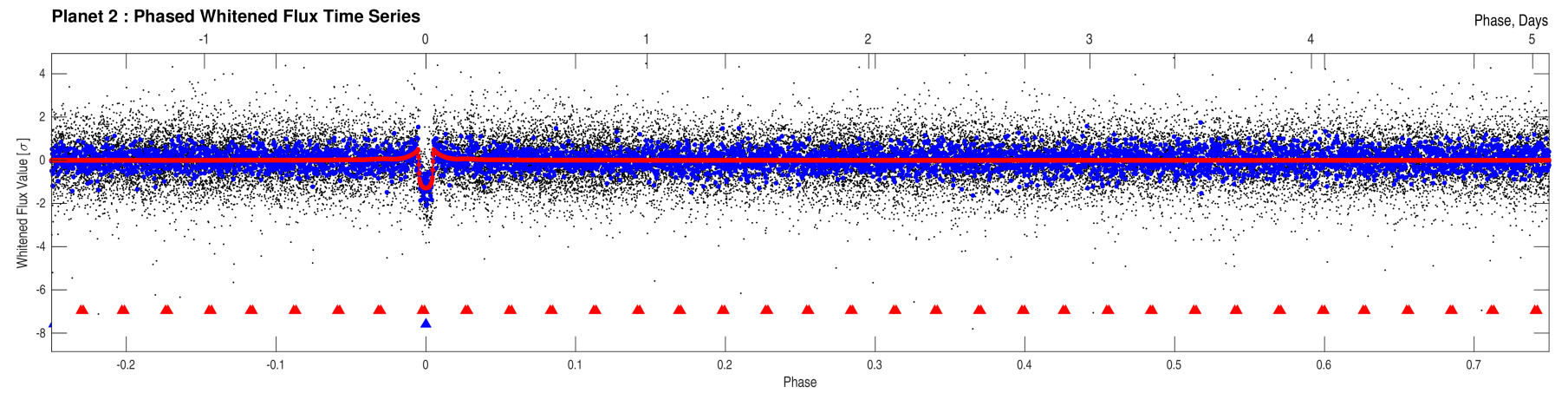
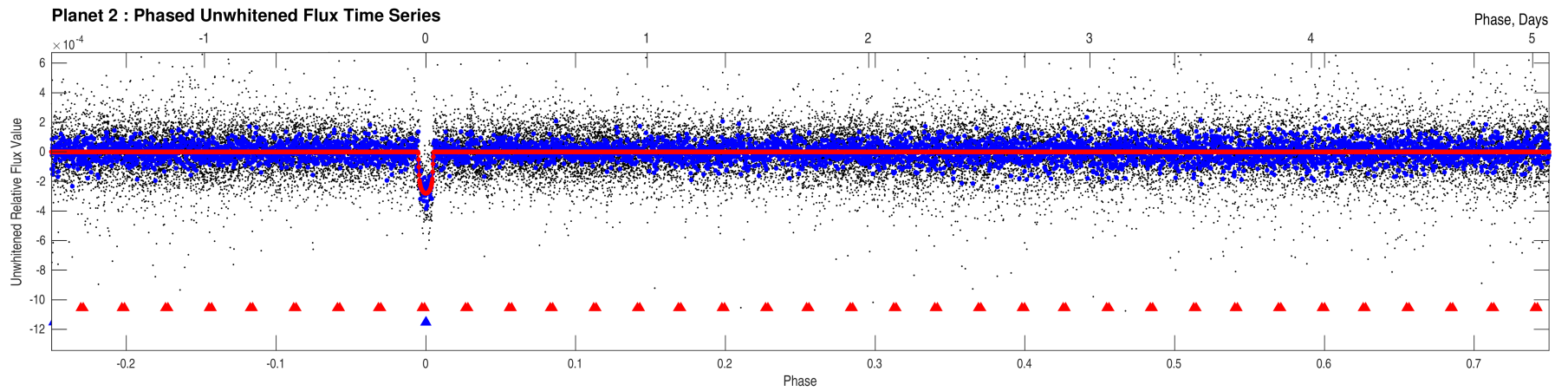


Offsets Relative to TIC Position



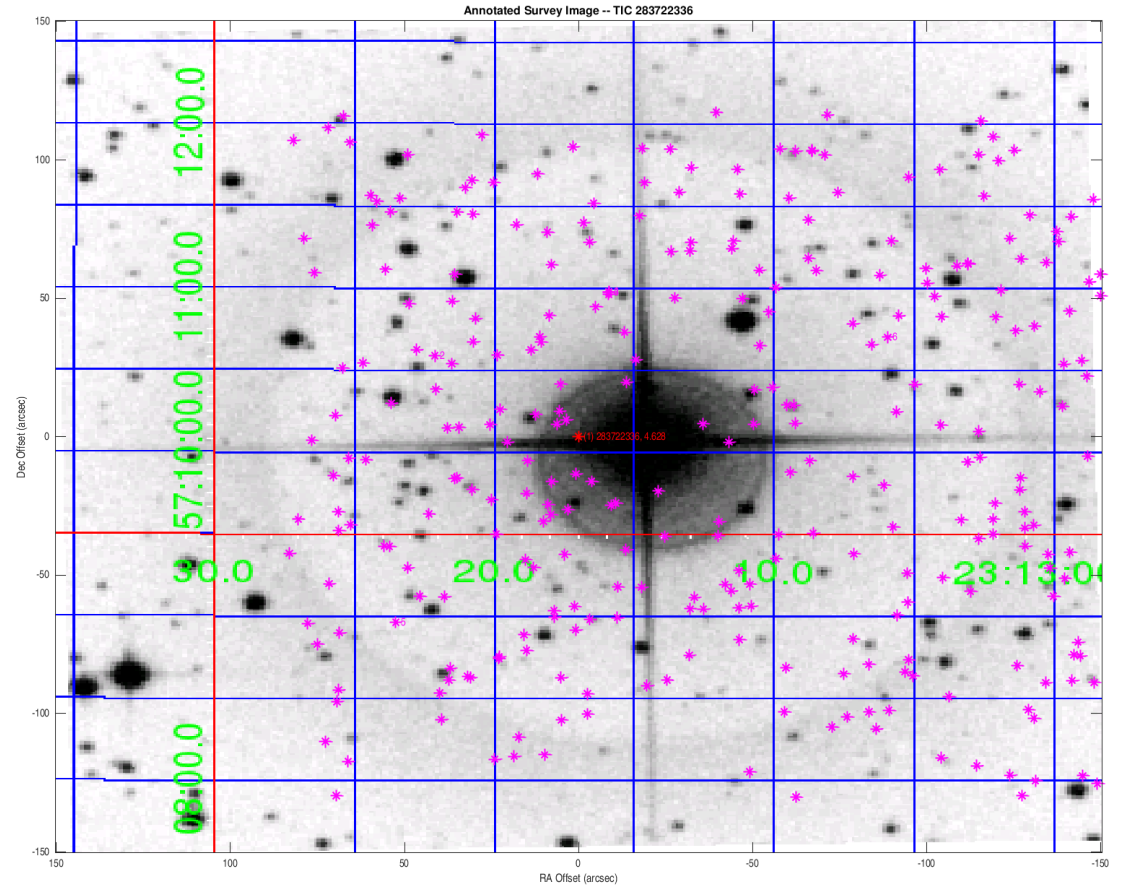






Stellar Distance Table

Index	TIC ID	TESS Mag	Distance (arcsec)
1	0000000283722336	4.63	0.00
2	0000000283722382	13.01	50.54
3	0000000283722412	13.04	52.97
4	00000002047267705	13.46	53.02
5	0000000283722251	12.54	85.12
6	0000000283722394	10.99	95.79



Distances are corrected for proper motion. This table may not contain all of the objects shown.