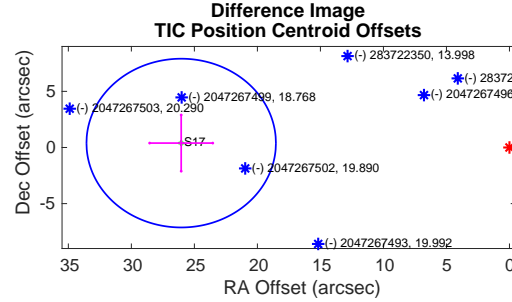
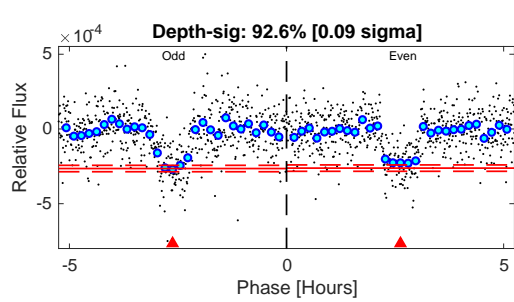
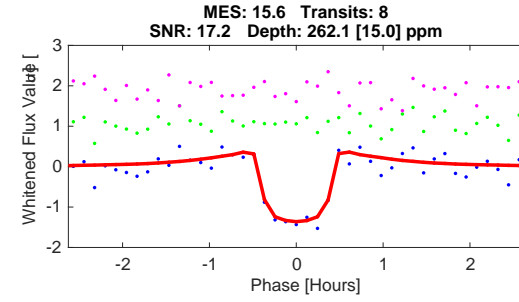
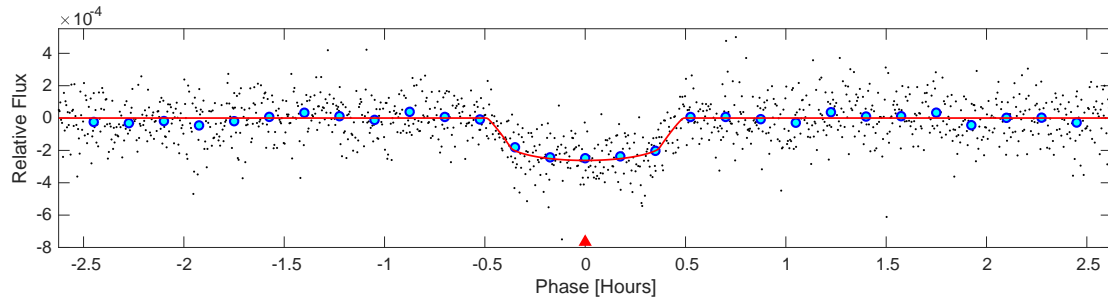
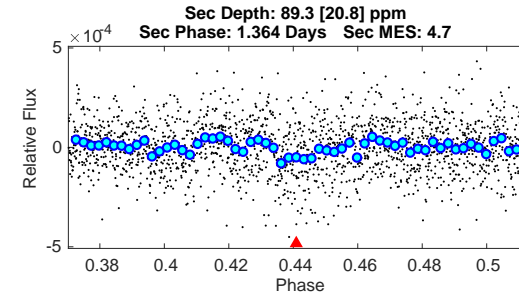
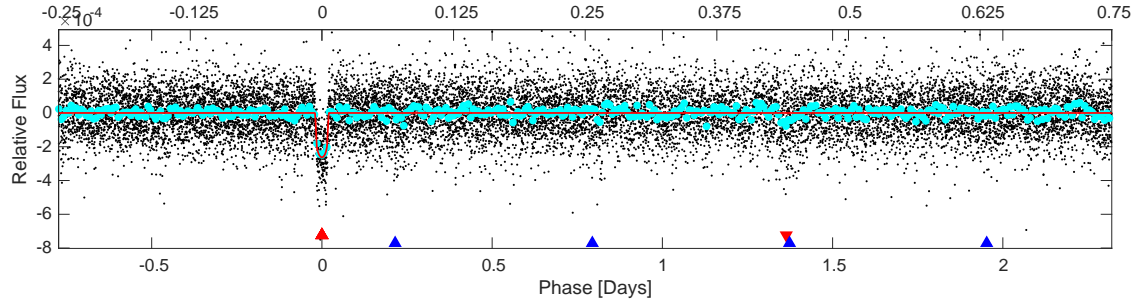
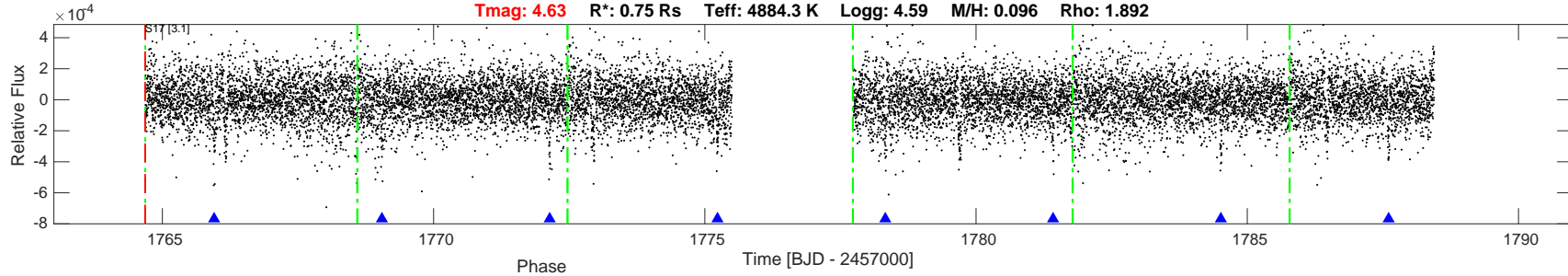


TIC: 283722336 Candidate: 1 of 2 Period: 3.093 d
TOI: 1469.01 Corr: 0.990

Tmag: 4.63 R*: 0.75 Rs Teff: 4884.3 K Logg: 4.59 M/H: 0.096 Rho: 1.892



DV Fit Results:

Period = 3.09322 [0.00020] d
Epoch = 1765.9537 [0.0009] BTJD
Rp/R* = 0.0154 [0.0064]
a/R* = 22.73 [40.30]
b = 0.57 [2.15]
Seff = 192.91 [38.30]
Teff = 951 [47] K
Rp = 1.26 [0.54] Re
a = 0.0386 [0.0035] AU
Rho = 16.493 [87.722]
Ag = 46.16 [40.78] [1.11 sigma]
Tp = 3831 [839] K [3.43 sigma]

DV Diagnostic Results:

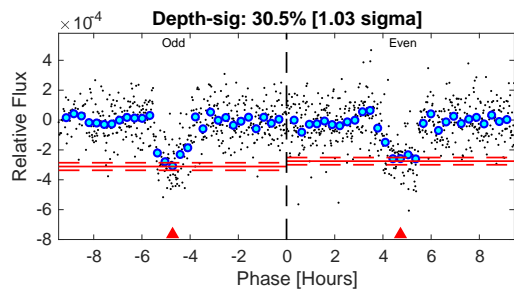
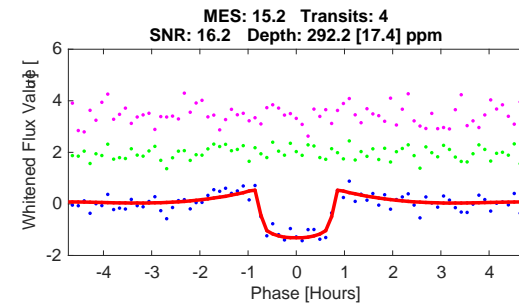
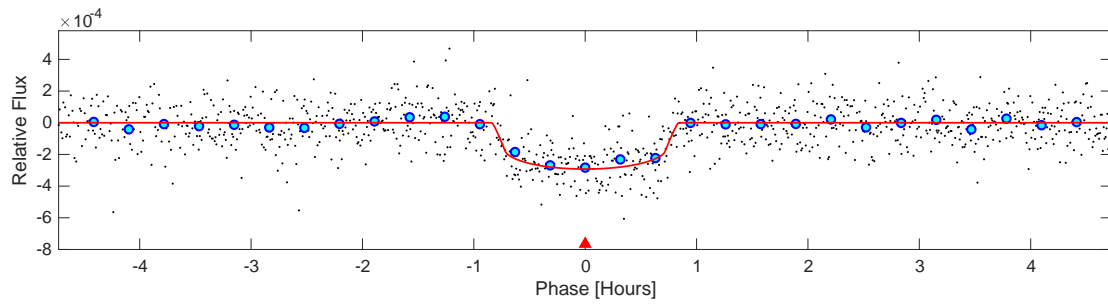
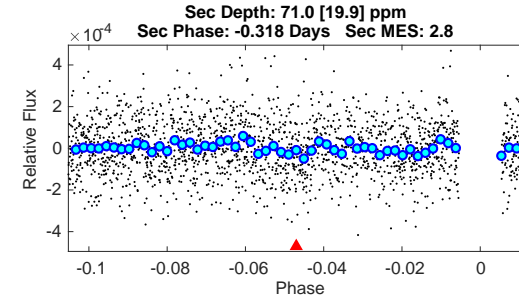
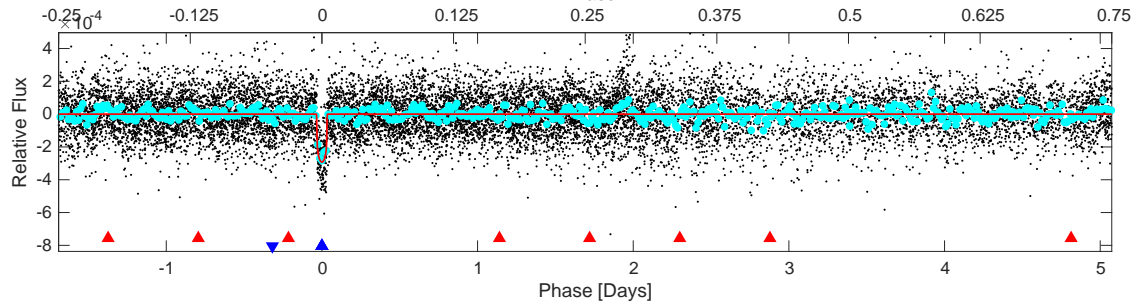
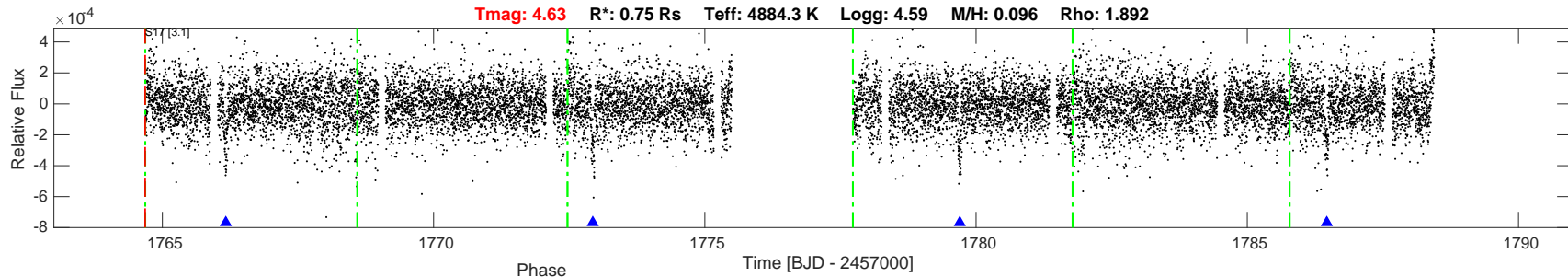
ShortPeriod-sig: N/A
LongPeriod-sig: 100.0% [48.90 sigma]
ModelChiSquare2-sig: 97.7%
ModelChiSquareGof-sig: 100.0%
Bootstrap-pfa: 5.32e-27
GhostDiagnostic-chr: N/A
OotOffset-rm: 26.902 arcsec [10.70 sigma]
TicOffset-rm: 26.049 arcsec [10.40 sigma]
OotOffset-tot: 1
TicOffset-tot: 1
DiffImageQuality-fgm: 0.00 [0/1]
DiffImageOverlap-fno: 1.00 [1/1]

Software Revision: spoc-4.0.25-20200311 -- Date Generated: 20-Mar-2020 21:54:59 Z

This Data Validation Report Summary was produced in the TESS Science Processing Operations Center Pipeline at NASA Ames Research Center

TIC: 283722336 Candidate: 2 of 2 Period: 6.766 d
TOI: 1469.02 Corr: 0.982

Tmag: 4.63 **R*:** 0.75 Rs **Teff:** 4884.3 K **Logg:** 4.59 **M/H:** 0.096 **Rho:** 1.892



DV Fit Results:

Period = 6.76561 [0.00059] d
Epoch = 1766.1688 [0.0011] BTJD
Rp/R* = 0.0157 [0.0079]
a/R* = 31.37 [66.12]
b = 0.34 [5.51]
Seff = 67.94 [13.49]
Teq = 732 [36] K
Rp = 1.29 [0.65] Re
a = 0.0650 [0.0060] AU
Rho = 9.061 [57.299]
Ag = 99.75 [105.05] [0.94 sigma]
Tp = 3578 [937] K [3.04 sigma]

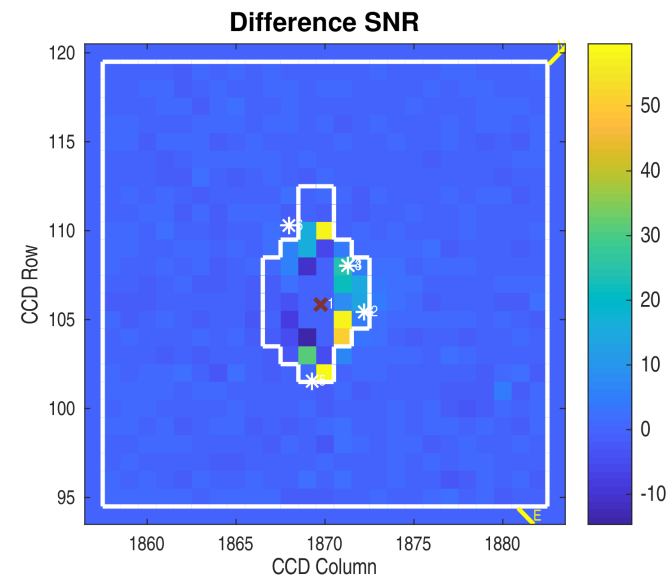
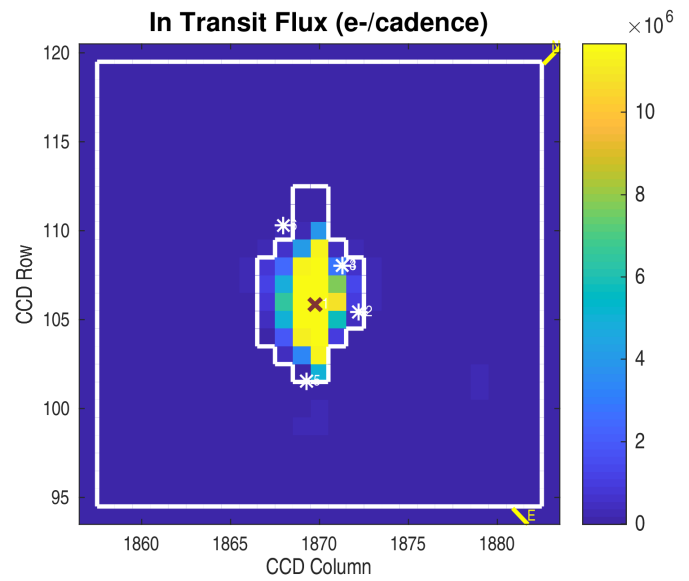
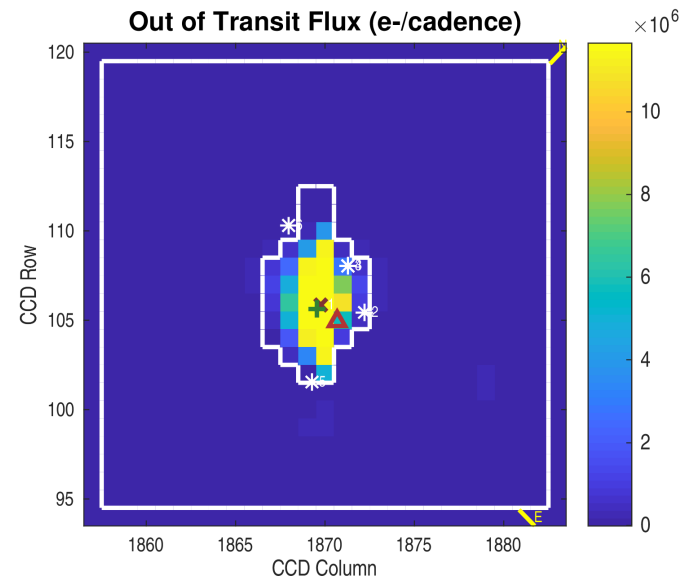
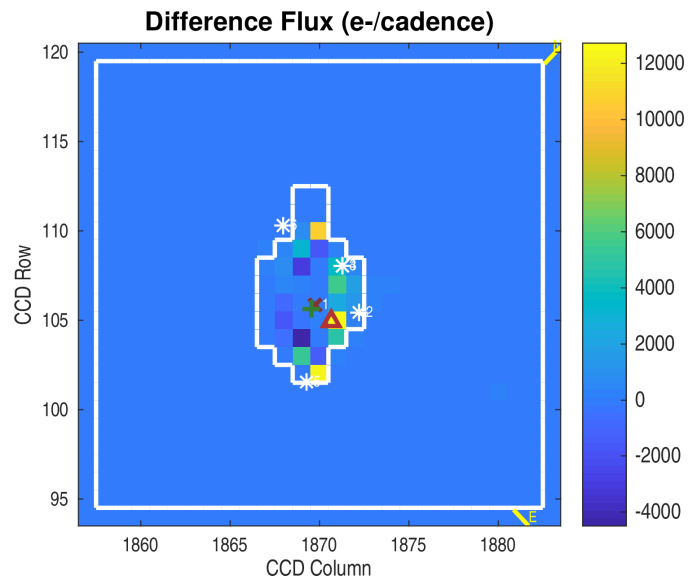
DV Diagnostic Results:

ShortPeriod-sig: 100.0% [48.90 sigma]
LongPeriod-sig: N/A
ModelChiSquare2-sig: 72.5%
ModelChiSquareGof-sig: 100.0%
Bootstrap-pfa: 9.55e-63
GhostDiagnostic-chr: N/A
OotOffset-rm: N/A
TicOffset-rm: N/A
OotOffset-tot: 0
TicOffset-tot: 0
DiffImageQuality-fgm: N/A
DiffImageOverlap-fno: 1.00 [1/1]

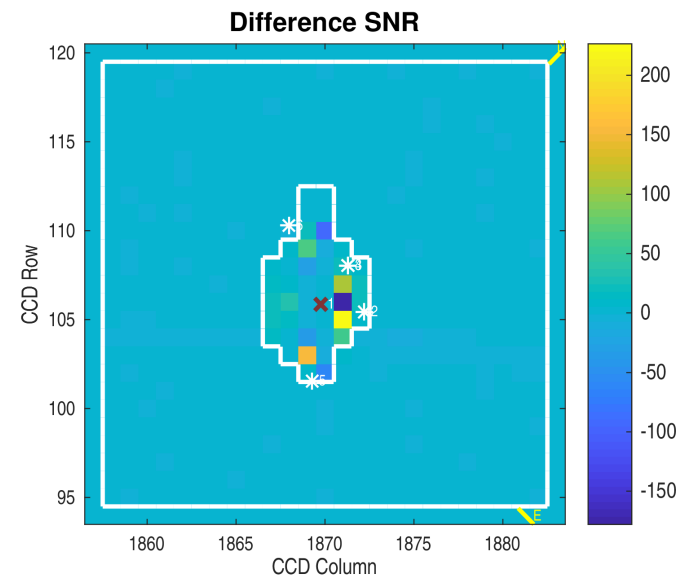
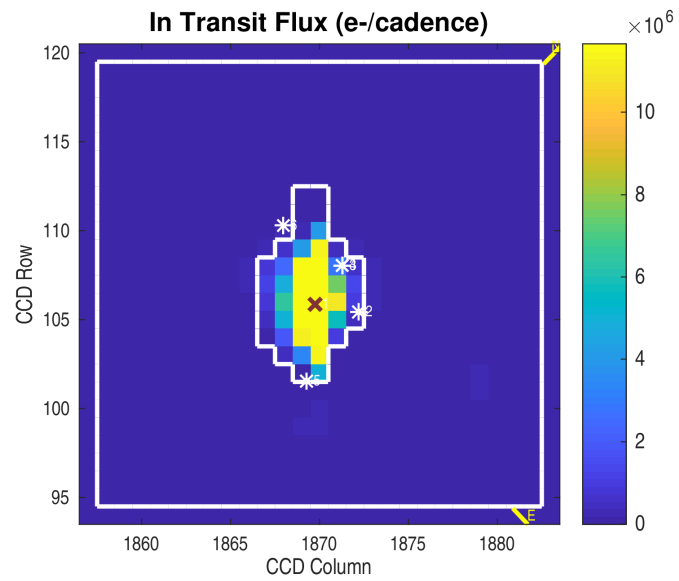
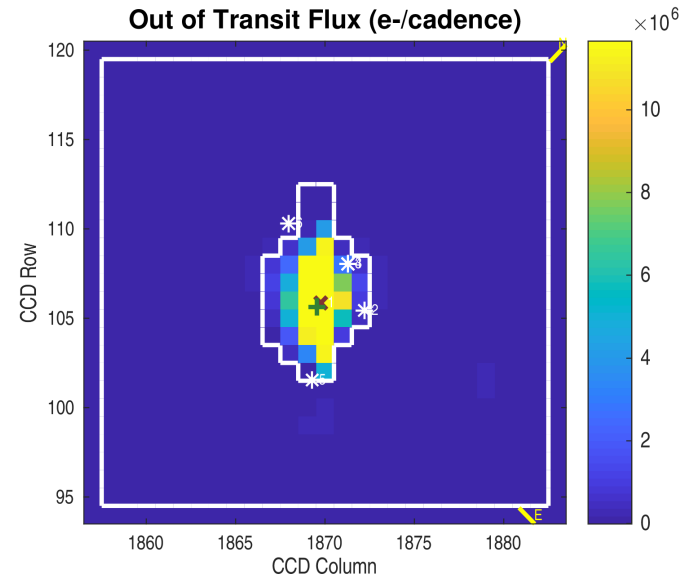
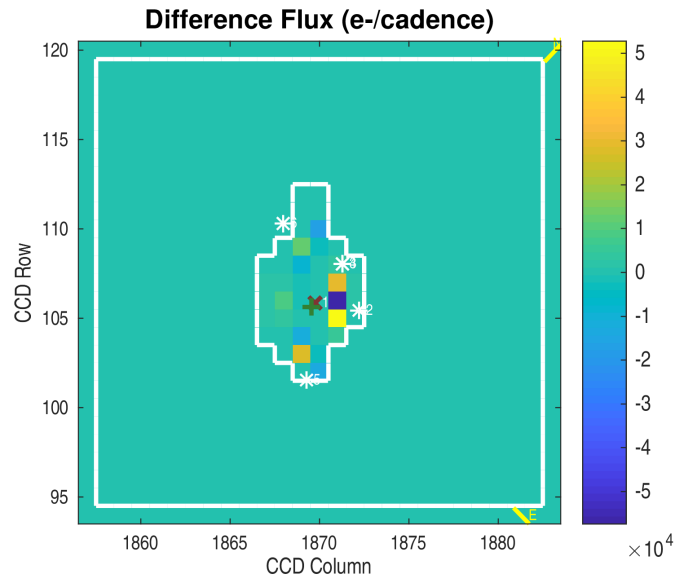
Software Revision: spoc-4.0.25-20200311 -- Date Generated: 20-Mar-2020 21:55:05 Z

This Data Validation Report Summary was produced in the TESS Science Processing Operations Center Pipeline at NASA Ames Research Center

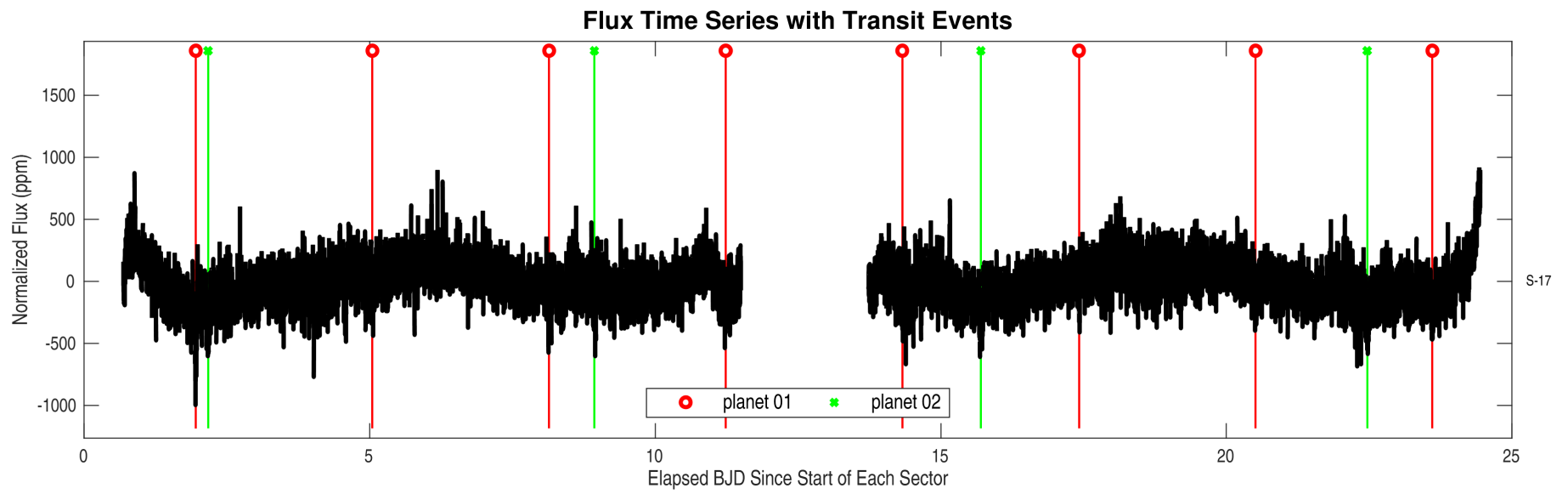
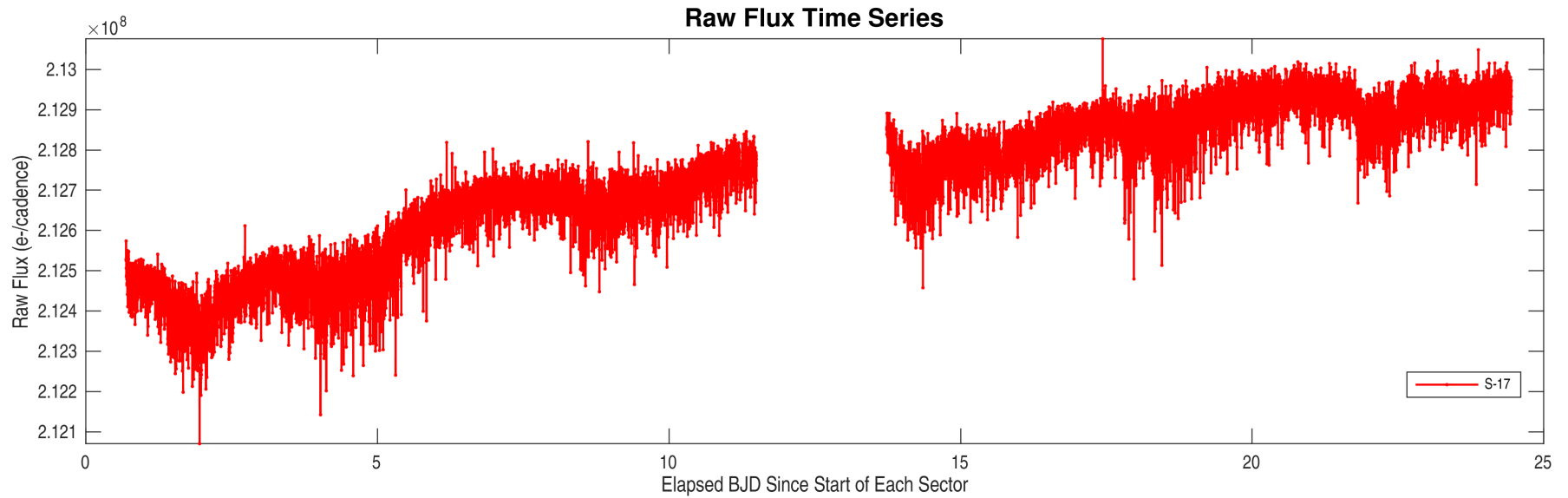
Planet Candidate 1 / Sector 17 / Target Pixel Table 176

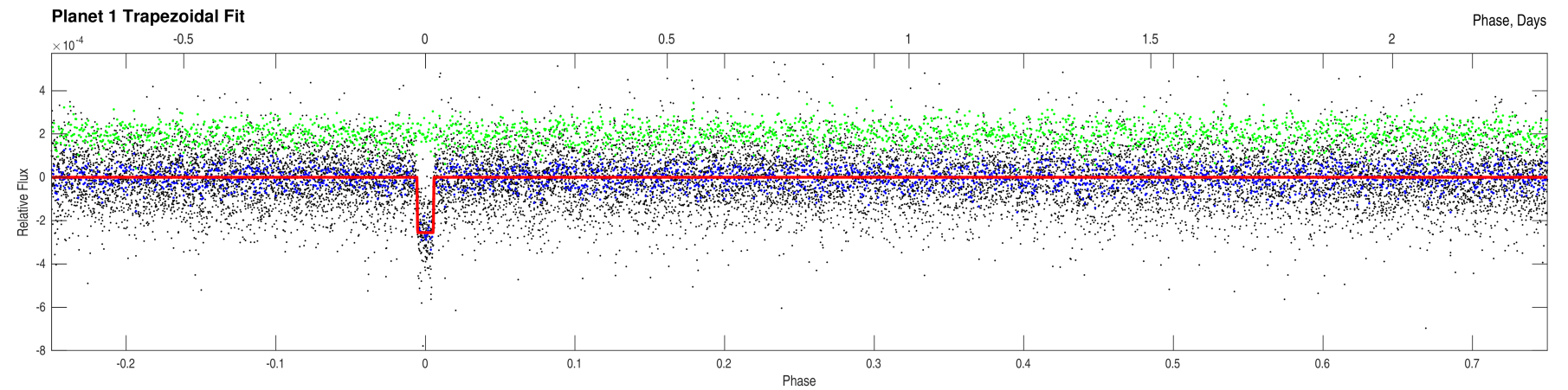
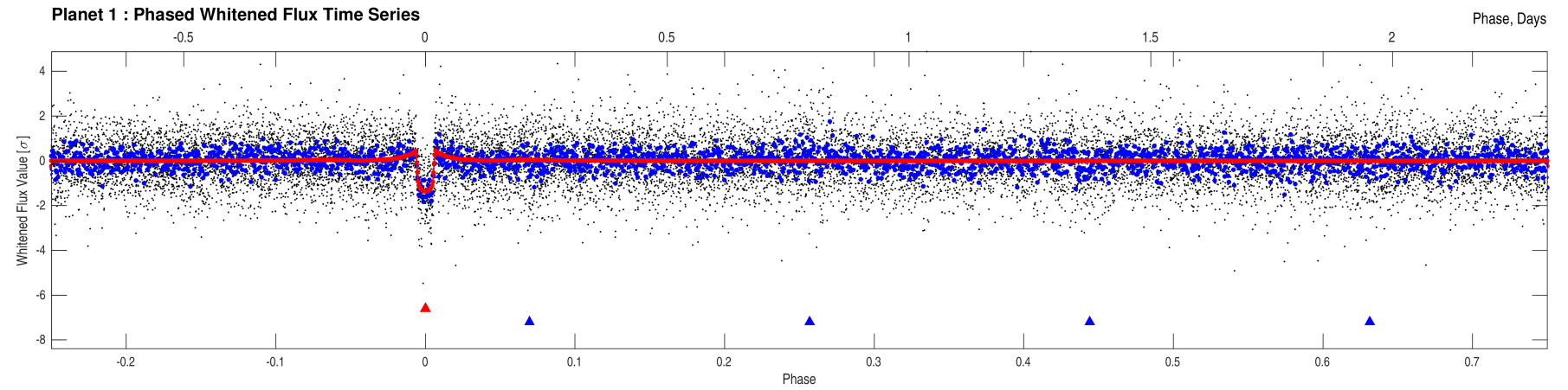
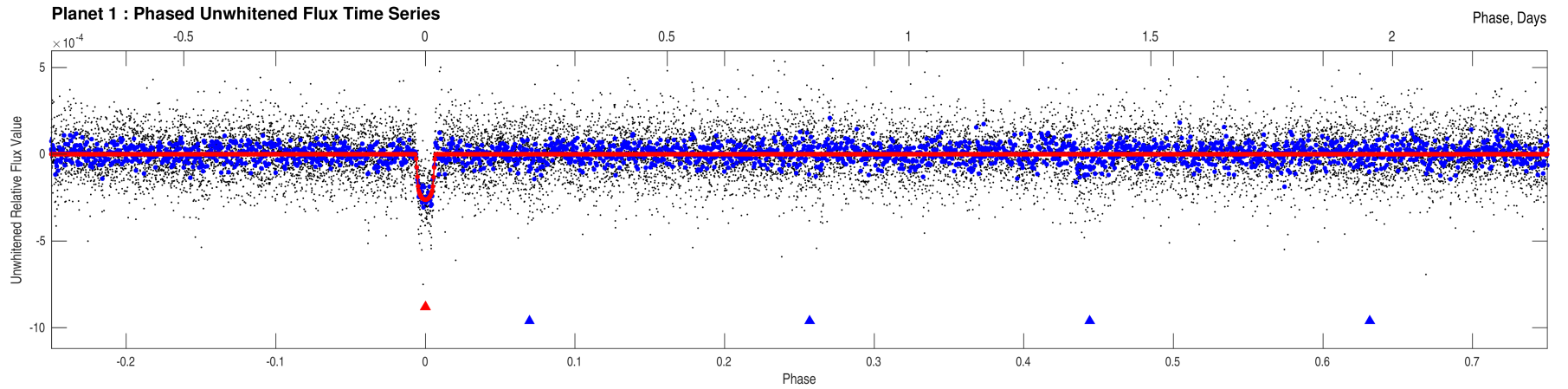


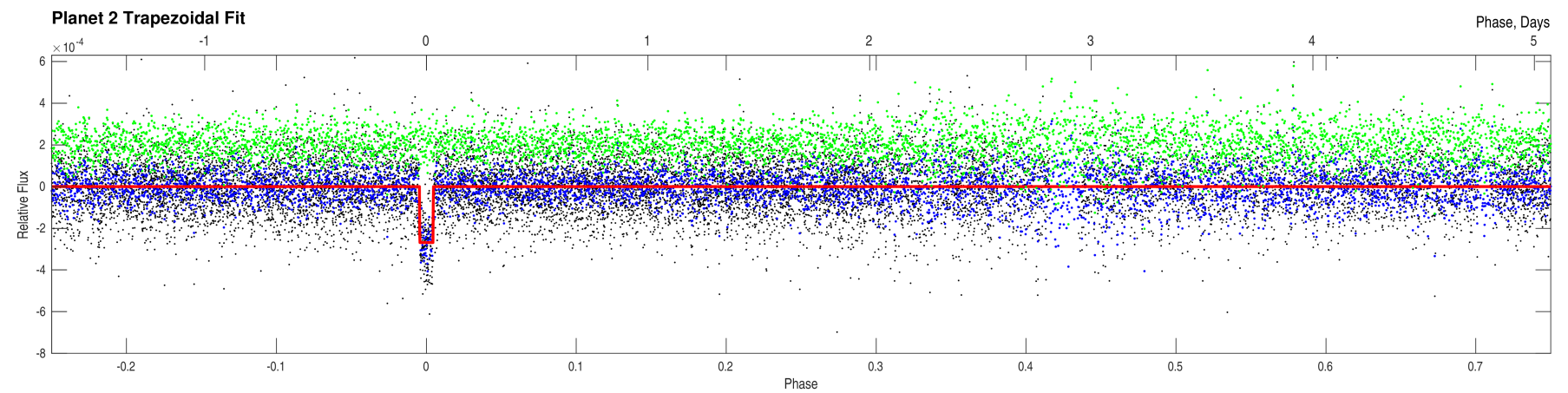
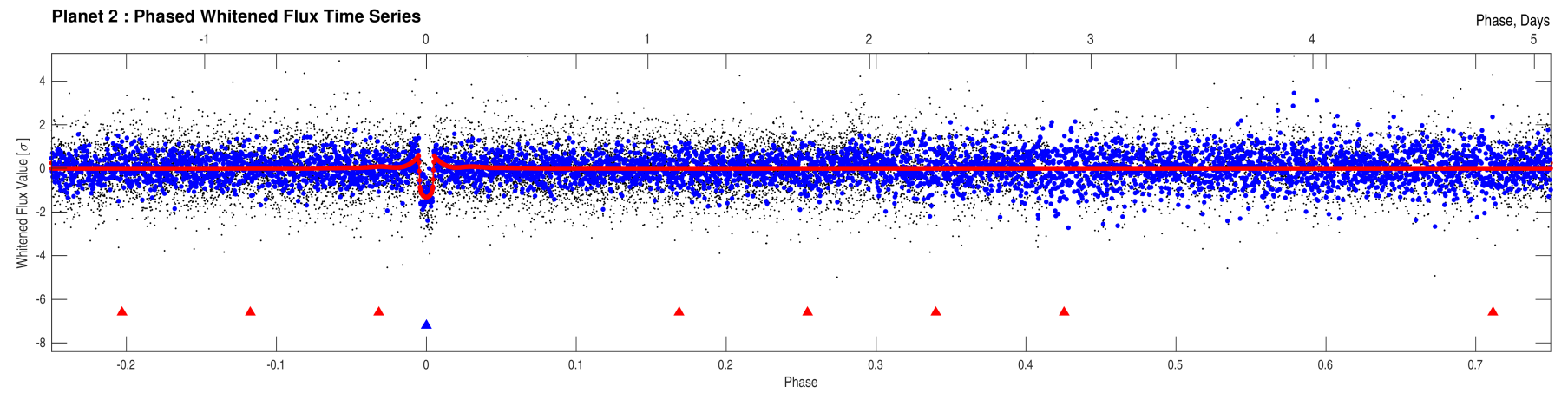
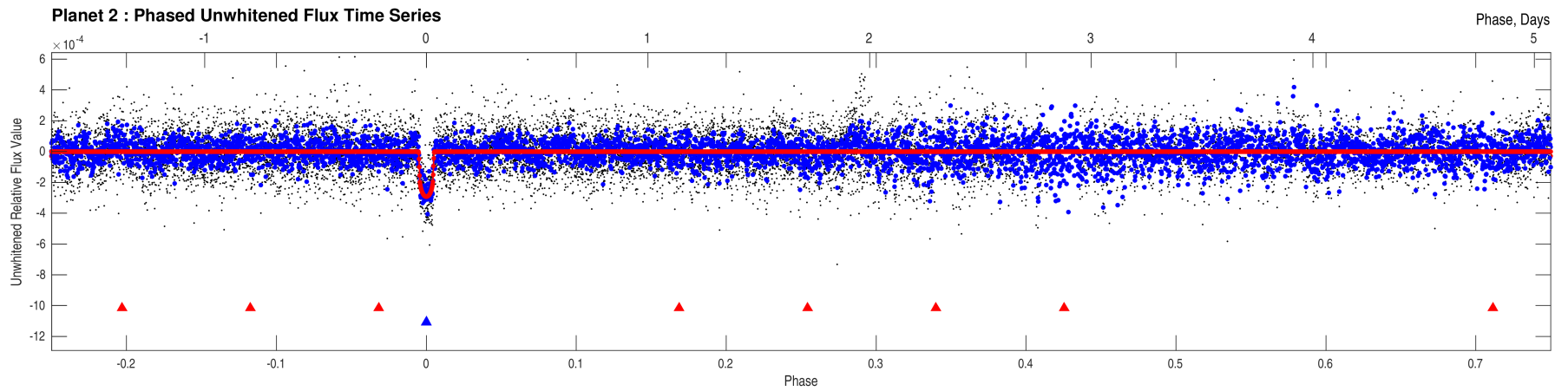
Planet Candidate 2 / Sector 17 / Target Pixel Table 176



Difference Image Centroids not available for planet 02.

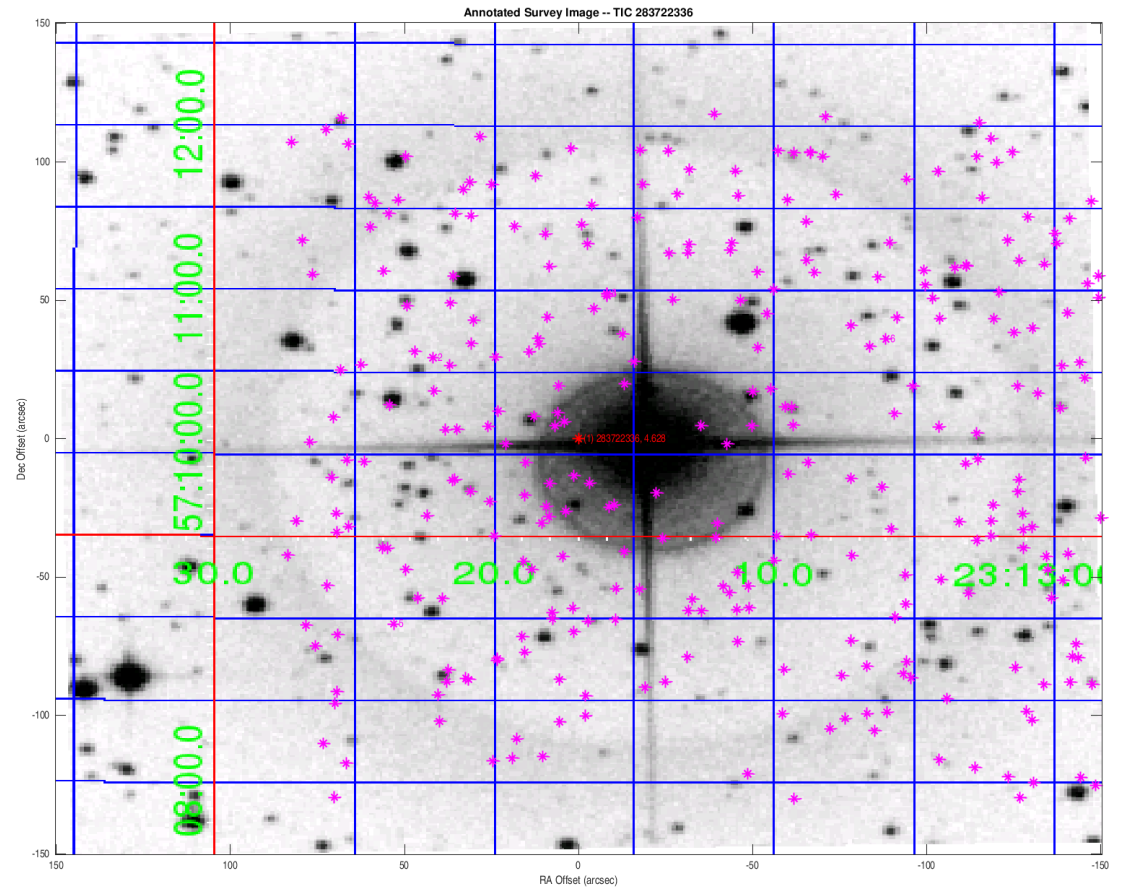






Stellar Distance Table

Index	TIC ID	TESS Mag	Distance (arcsec)
1	0000000283722336	4.63	0.00
2	0000000283722382	13.01	51.04
3	0000000283722412	13.04	52.96
4	00000002047267705	13.46	53.01
5	0000000283722251	12.54	85.39
6	0000000283722394	10.99	95.32



Distances are corrected for proper motion. This table may not contain all of the objects shown.