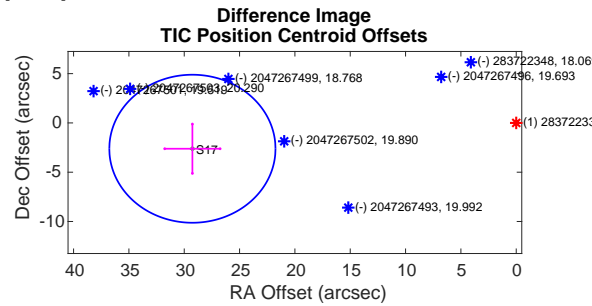
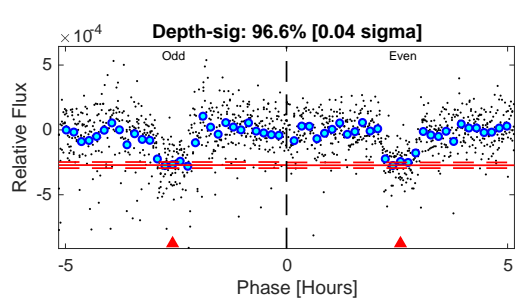
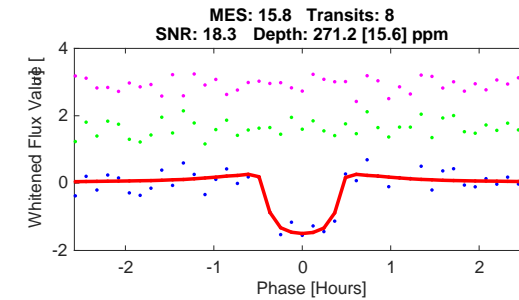
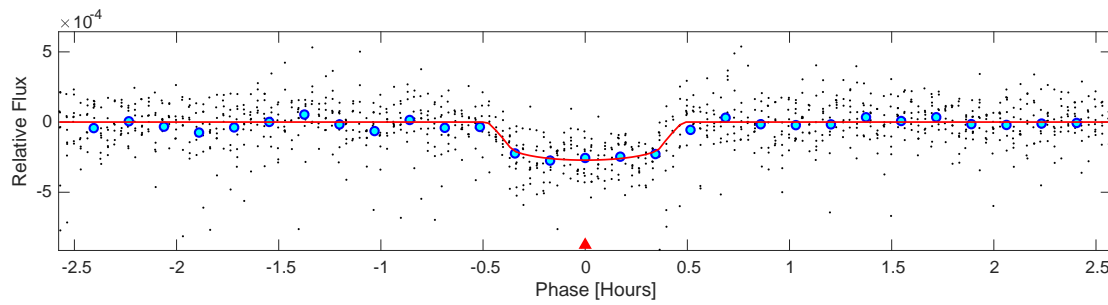
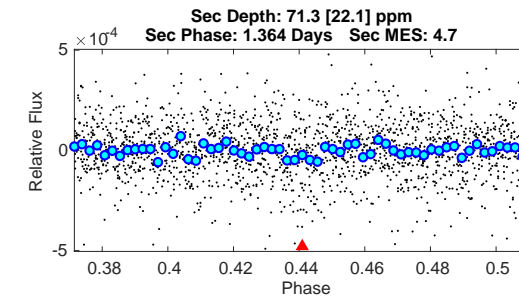
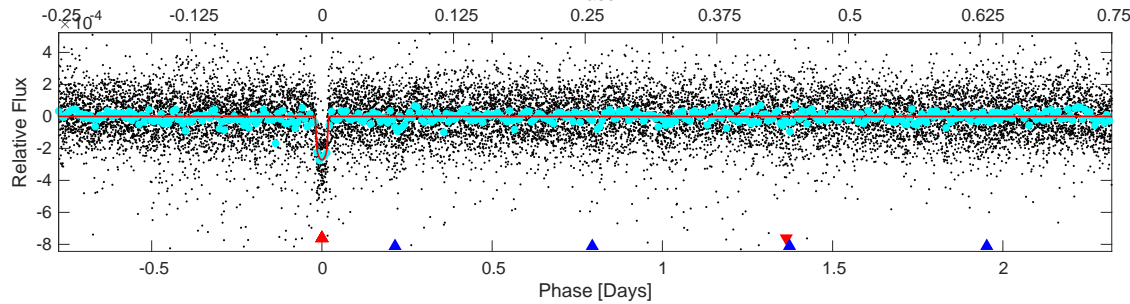
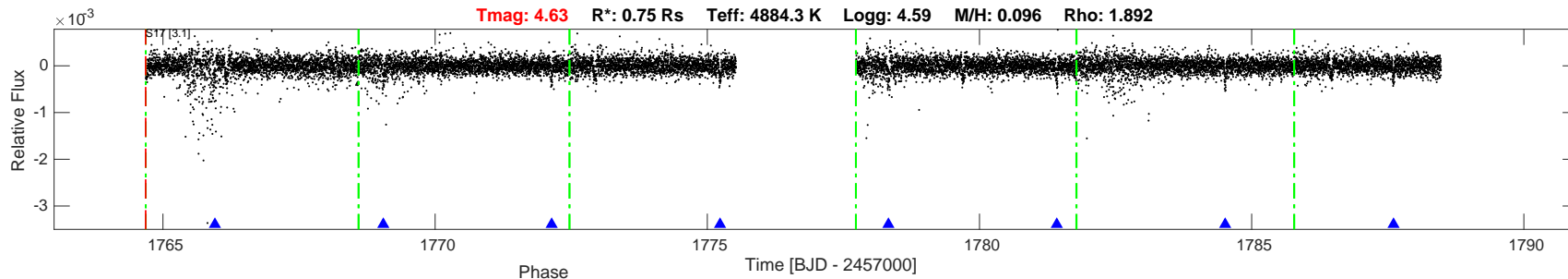


TIC: 283722336 Candidate: 1 of 2 Period: 3.093 d



DV Fit Results:

Period = 3.09307 [0.00024] d
 Epoch = 1765.9545 [0.0010] BTJD
 Rp/R* = 0.0157 [0.0066]
 R* = 22.59 [40.34]
 b = 0.60 [1.96]
 Seff = 192.92 [38.30]
 Teq = 951 [47] K
 Rp = 1.29 [0.55] Re
 a = 0.0386 [0.0035] AU
 Rho = 16.190 [86.724]
 Ag = 35.20 [32.02] [1.07 sigma]
 Tp = 3580 [808] K [3.25 sigma]

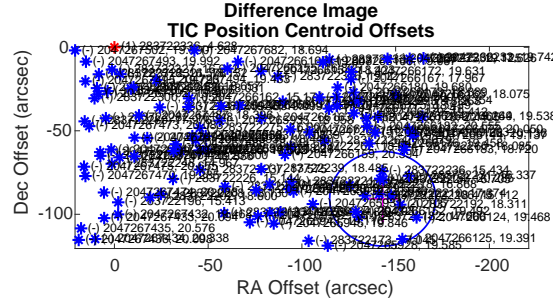
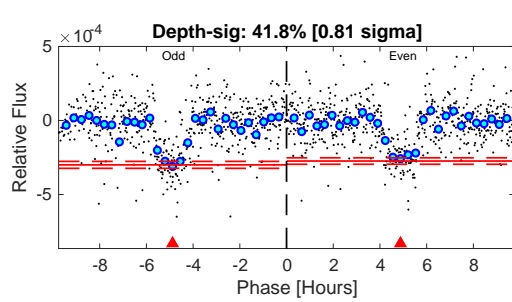
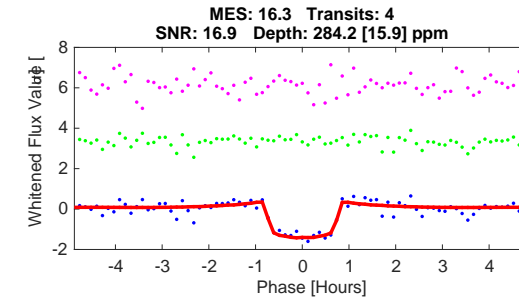
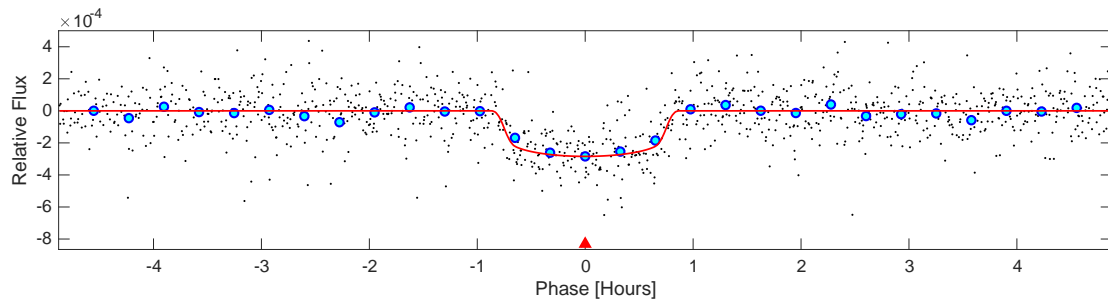
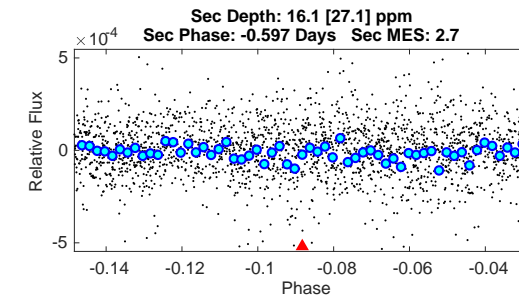
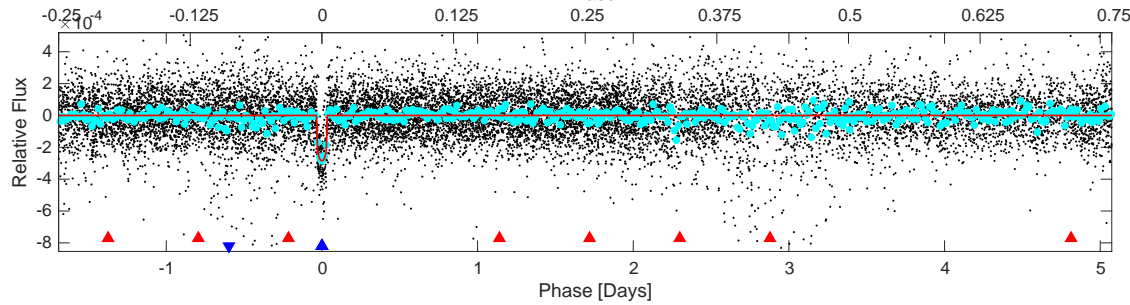
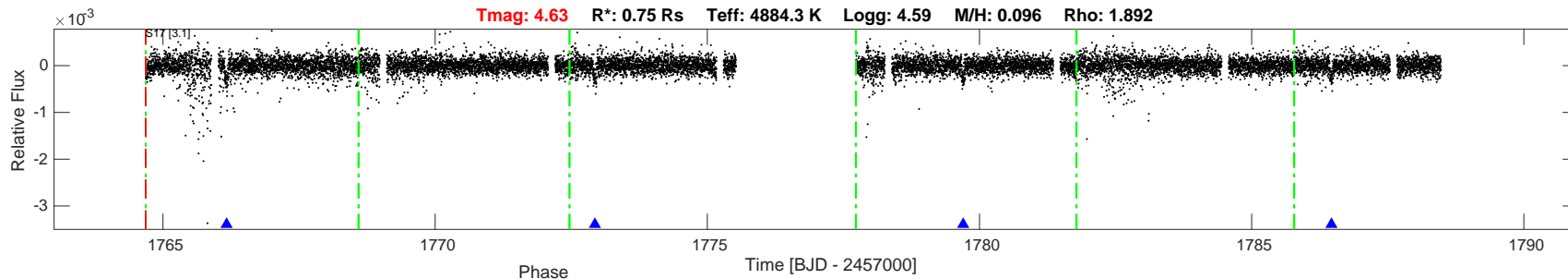
DV Diagnostic Results:

ShortPeriod-sig: N/A
 LongPeriod-sig: 100.0% [47.92 sigma]
 ModelChiSquare2-sig: 72.0%
 ModelChiSquareGof-sig: 100.0%
 Bootstrap-pfa: 3.32e-21
 GhostDiagnostic-chr: N/A
 OotOffset-rm: 29.536 arcsec [11.75 sigma]
 TicOffset-rm: 29.379 arcsec [11.74 sigma]
 OotOffset-tot: 1
 TicOffset-tot: 1
 DiffImageQuality-fgm: 0.00 [0/1]
 DiffImageOverlap-fno: 1.00 [1/1]

Software Revision: spoc-4.0.11-20191024 -- Date Generated: 15-Nov-2019 03:19:41 Z

This Data Validation Report Summary was produced in the TESS Science Processing Operations Center Pipeline at NASA Ames Research Center

TIC: 283722336 Candidate: 2 of 2 Period: 6.765 d



DV Fit Results:

Period = 6.76543 [0.00065] d
 Epoch = 1766.1693 [0.0013] BTJD
 Rp/R* = 0.0179 [0.0022]
 a/R* = 16.87 [9.84]
 b = 0.87 [0.17]
 Seff = 67.95 [13.49]
 Teq = 732 [36] K
 Rp = 1.47 [0.21] Re
 a = 0.0650 [0.0060] AU
 Rho = 1.409 [2.465]
 Ag = 17.44 [29.68] [0.55 sigma]
 Tp = 2314 [982] K [1.61 sigma]

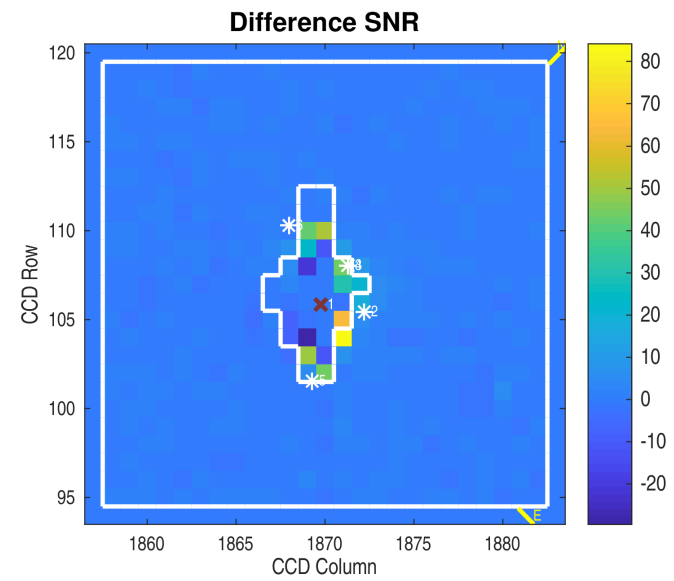
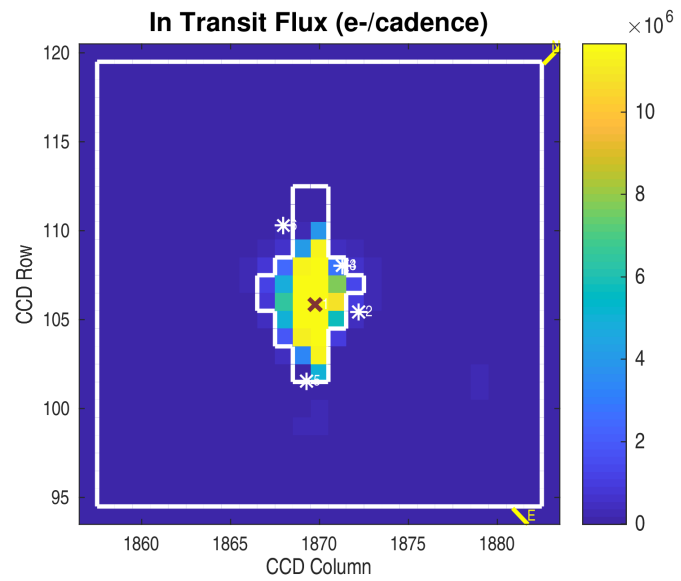
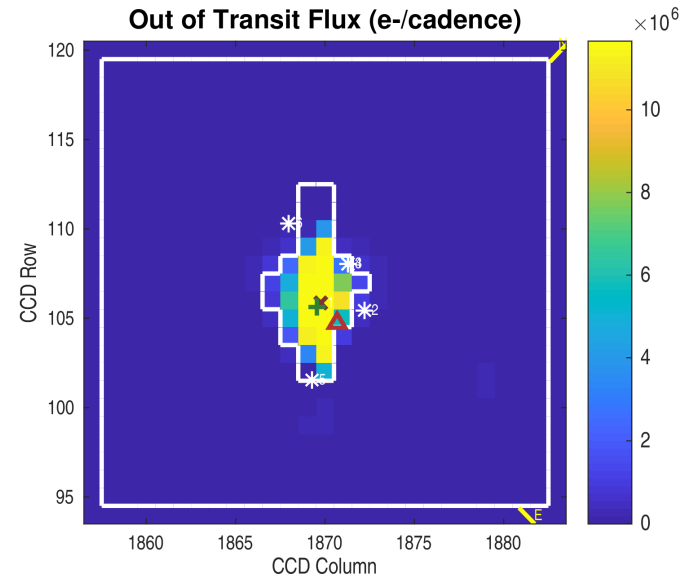
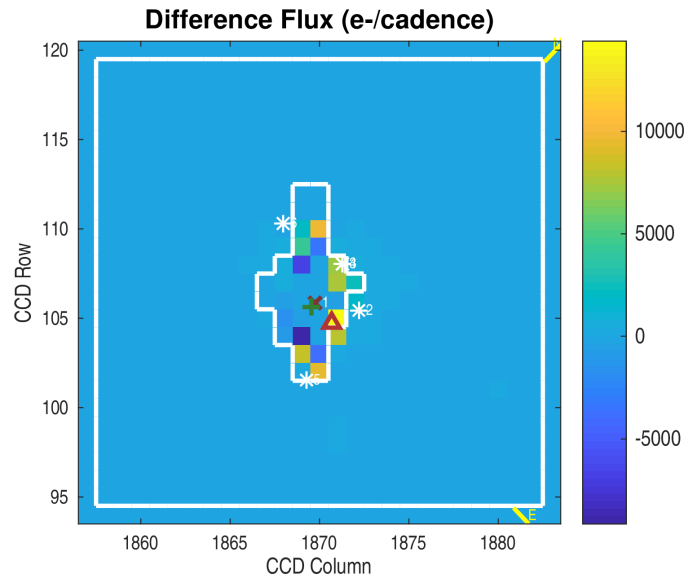
DV Diagnostic Results:

ShortPeriod-sig: 100.0% [47.92 sigma]
 LongPeriod-sig: N/A
 ModelChiSquare2-sig: 91.5%
 ModelChiSquareGof-sig: 100.0%
 Bootstrap-pfa: 4.83e-22
 GhostDiagnostic-chr: N/A
 OotOffset-rm: 166.207 arcsec [17.87 sigma]
 TicOffset-rm: 169.427 arcsec [17.96 sigma]
 OotOffset-tot: 1
 TicOffset-tot: 1
 DiffImageQuality-fgm: 0.00 [0/1]
 DiffImageOverlap-fno: 1.00 [1/1]

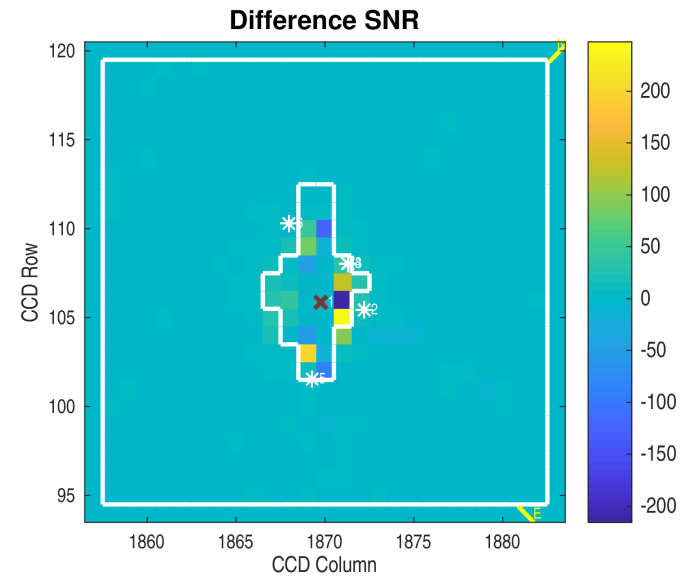
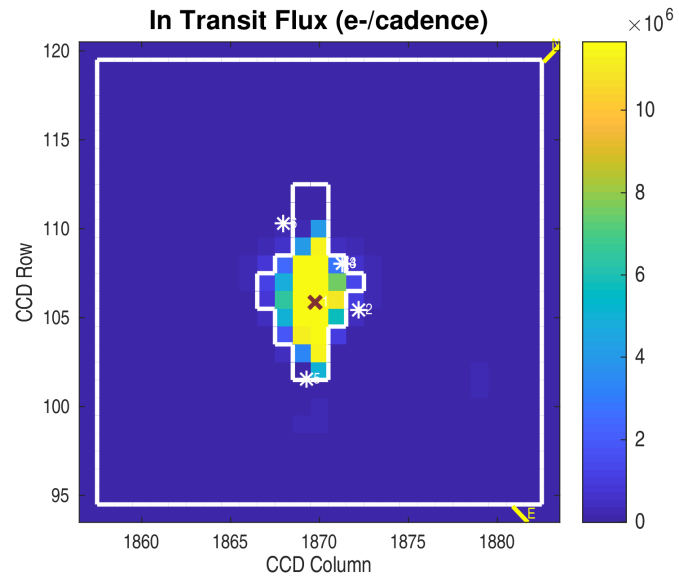
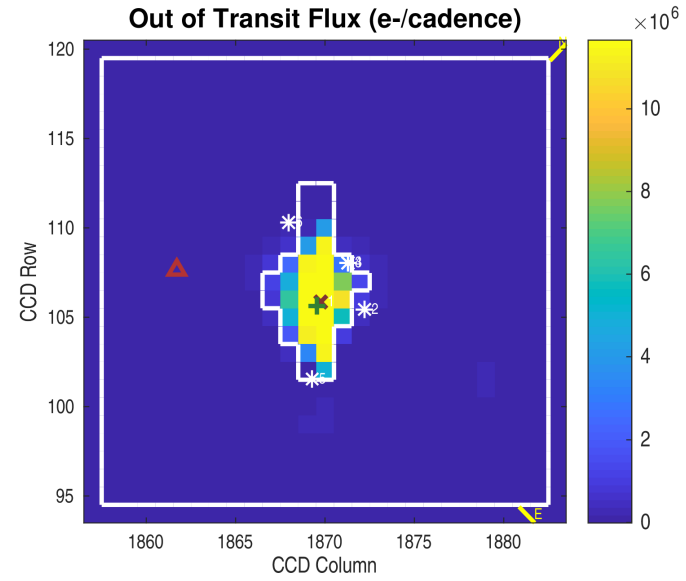
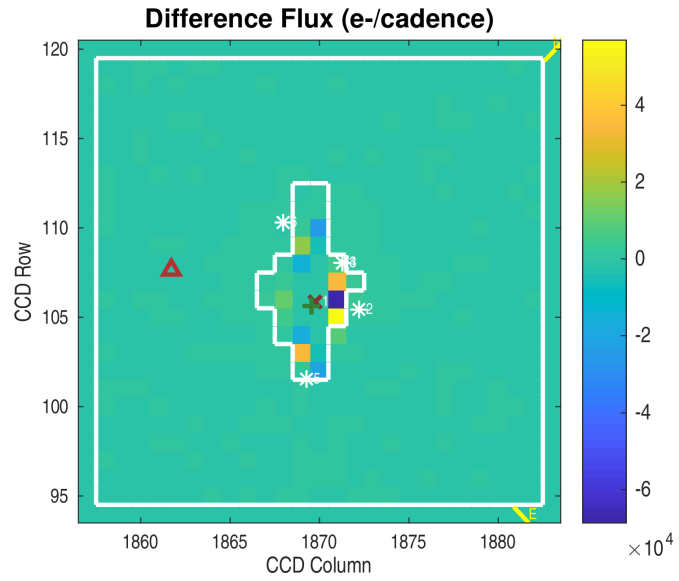
Software Revision: spoc-4.0.11-20191024 -- Date Generated: 15-Nov-2019 03:19:48 Z

This Data Validation Report Summary was produced in the TESS Science Processing Operations Center Pipeline at NASA Ames Research Center

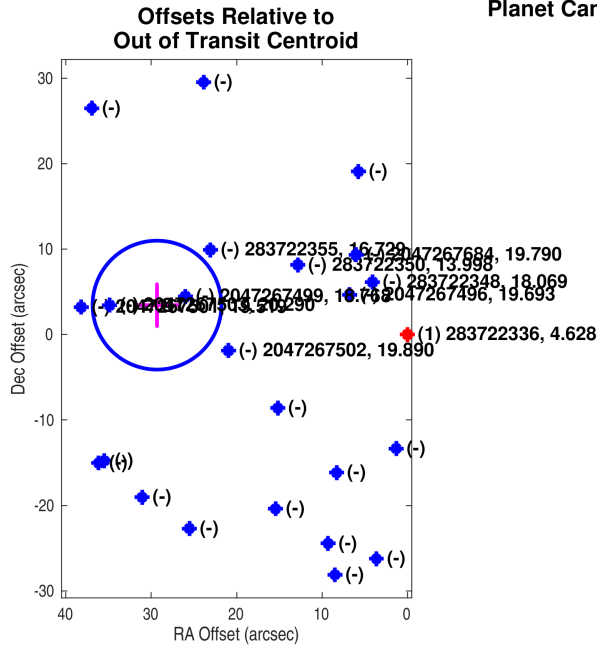
Planet Candidate 1 / Sector 17 / Target Pixel Table 176



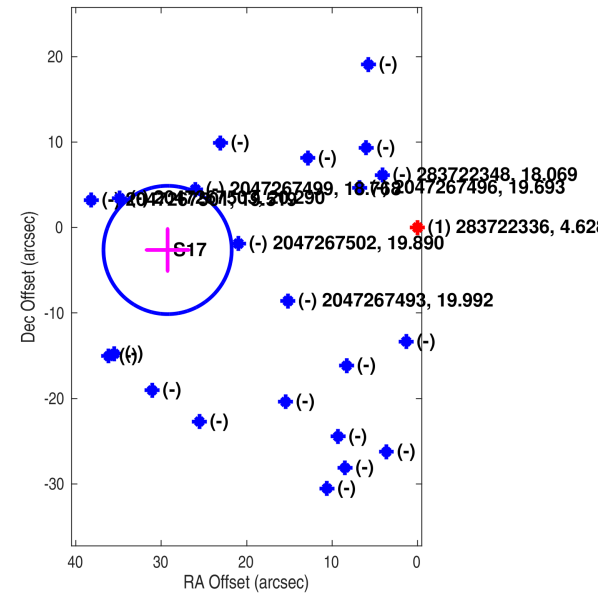
Planet Candidate 2 / Sector 17 / Target Pixel Table 176



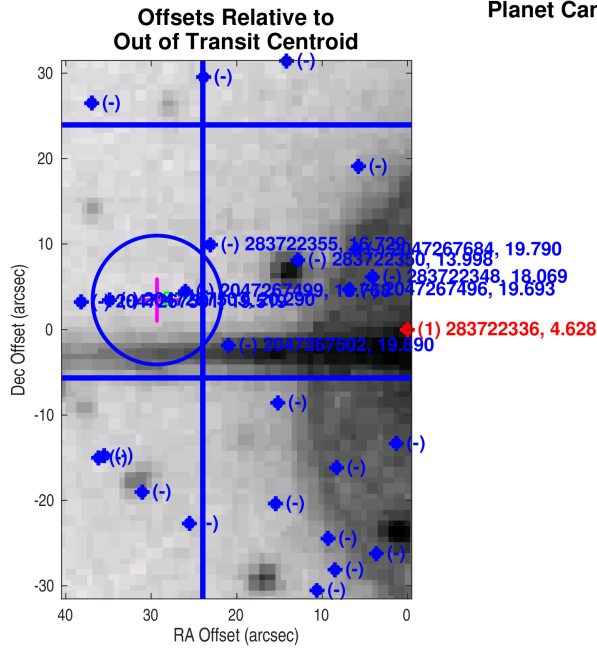
Planet Candidate 1



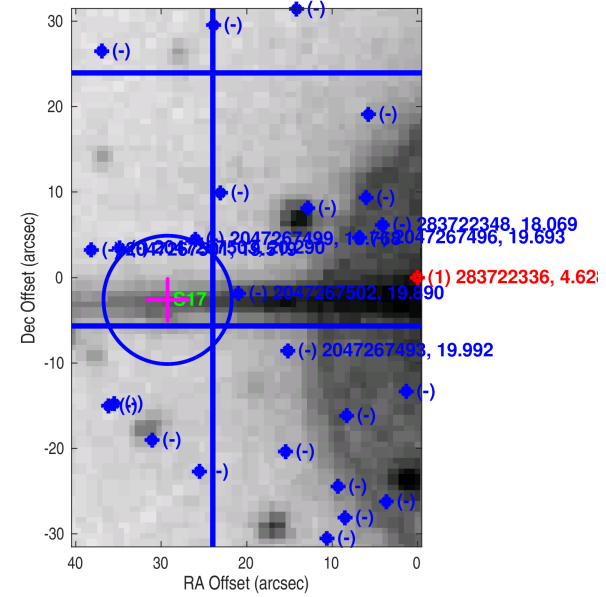
Offsets Relative to TIC Position

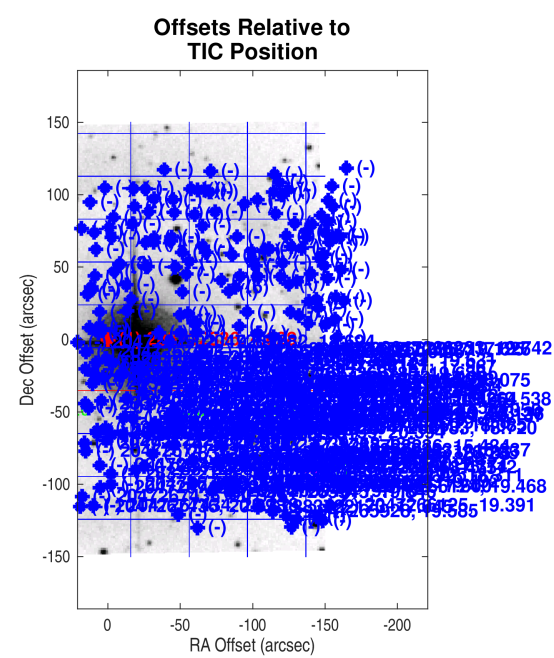
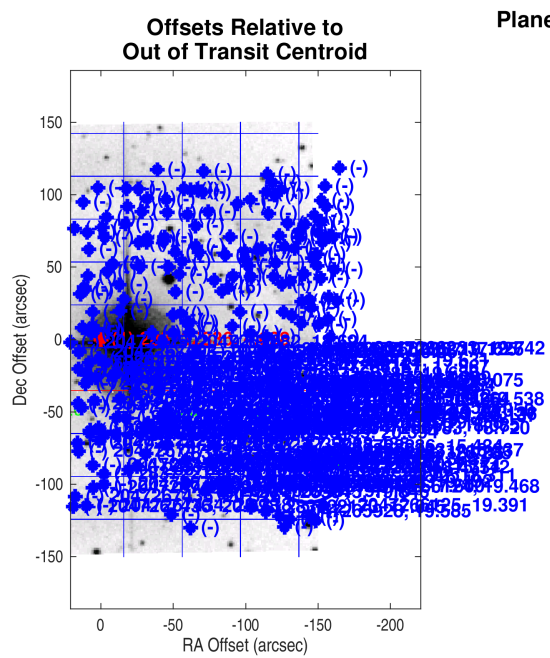
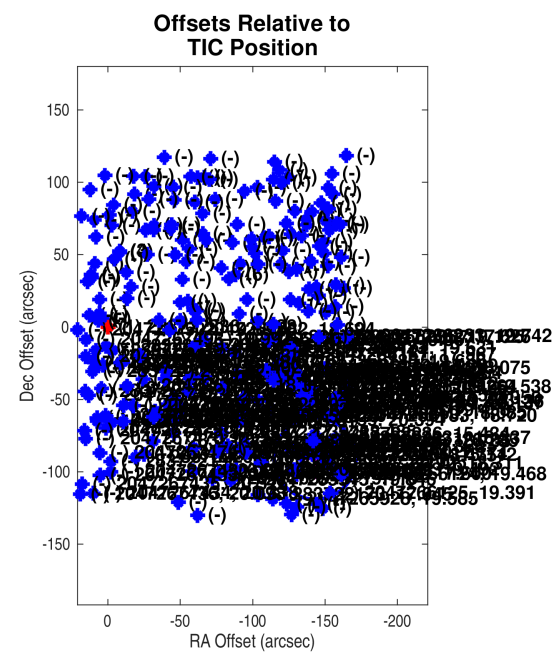
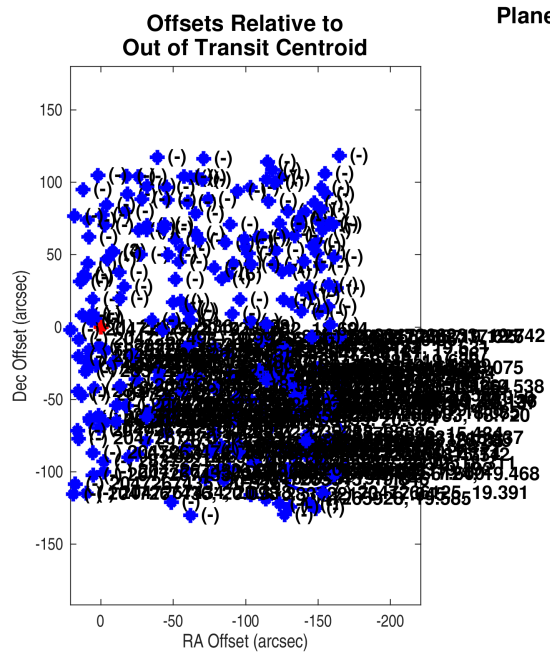


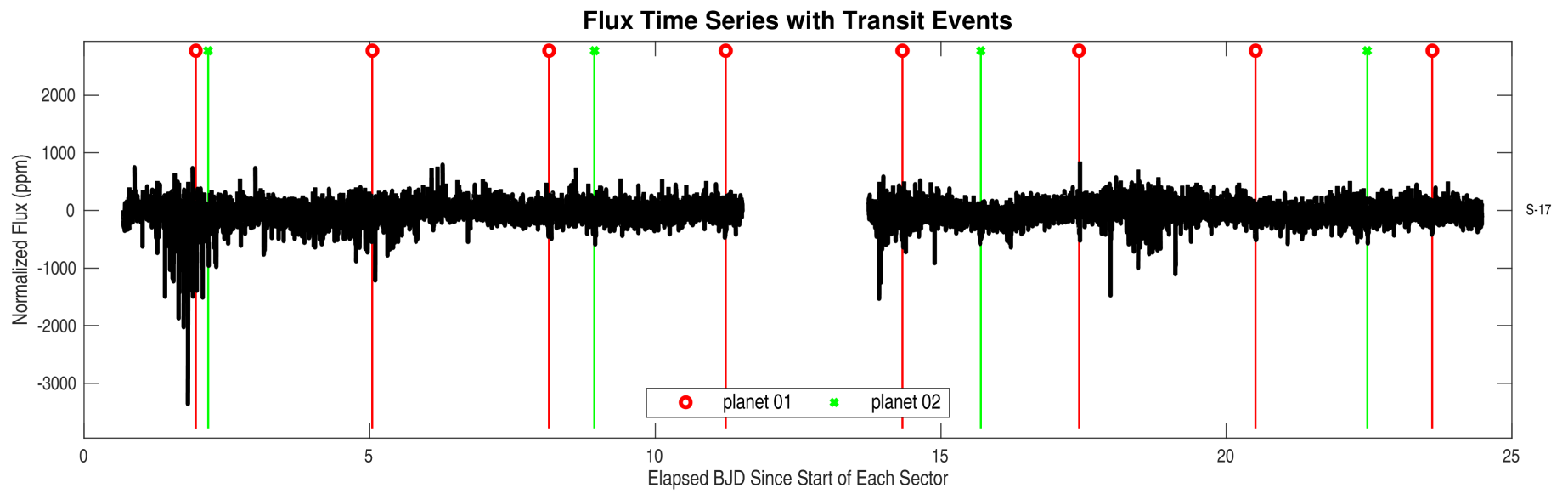
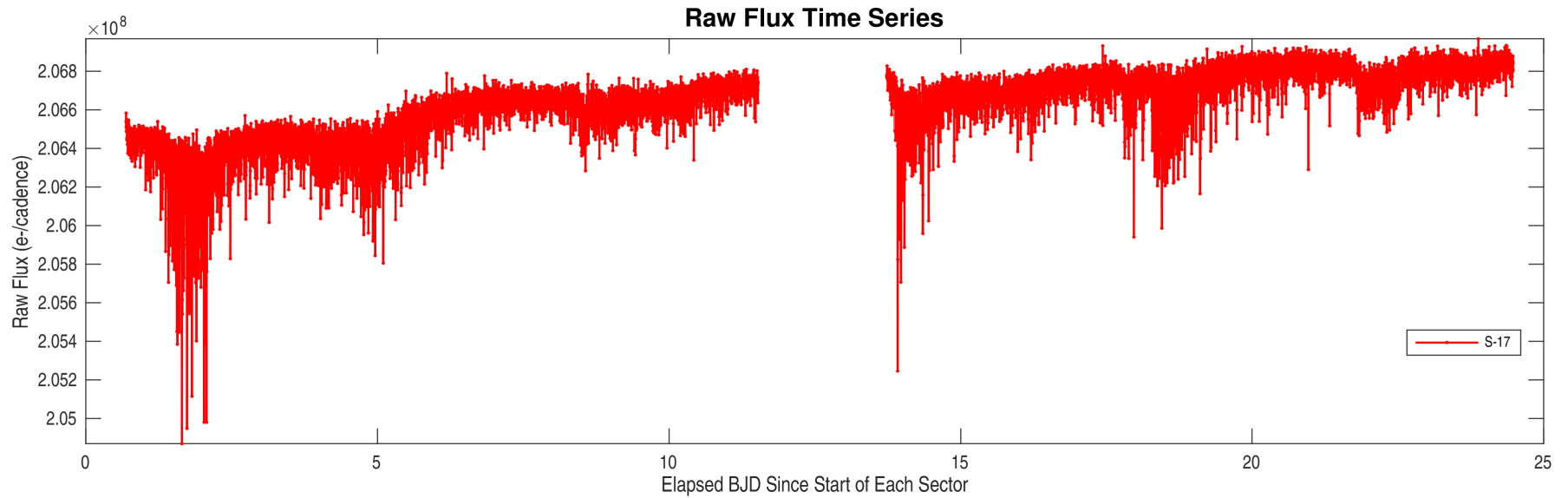
Planet Candidate 1

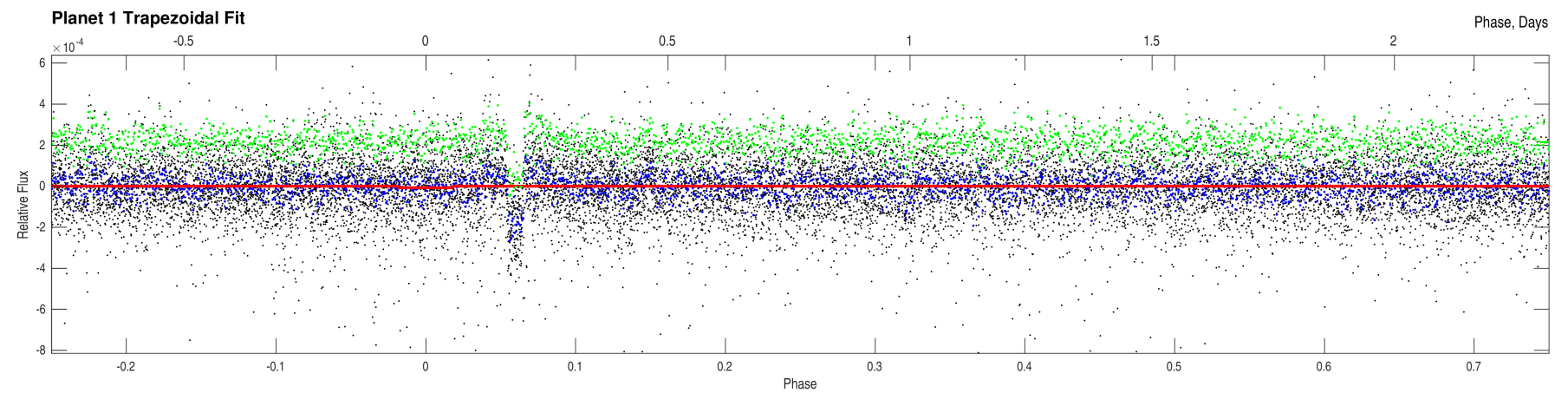
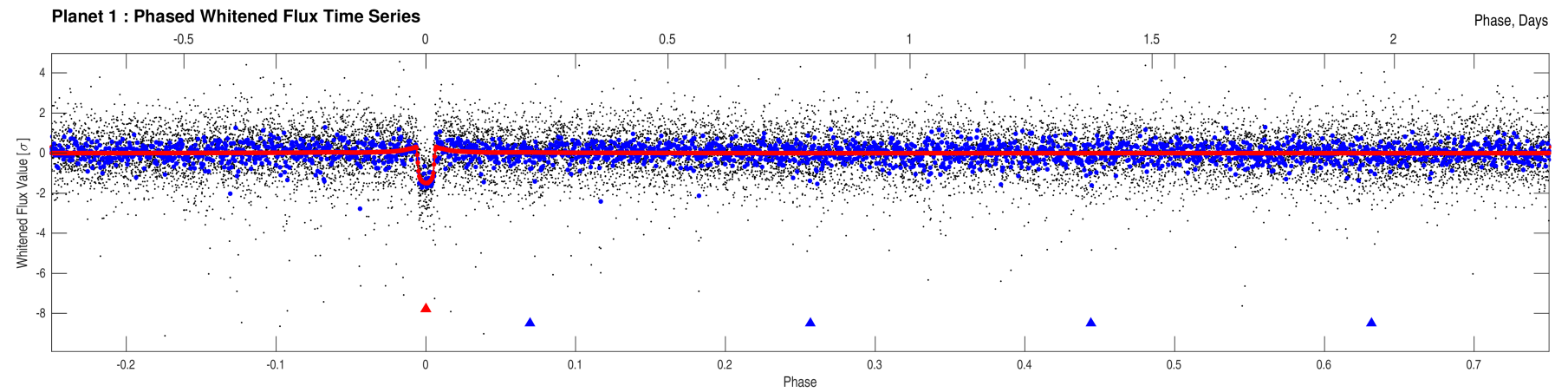
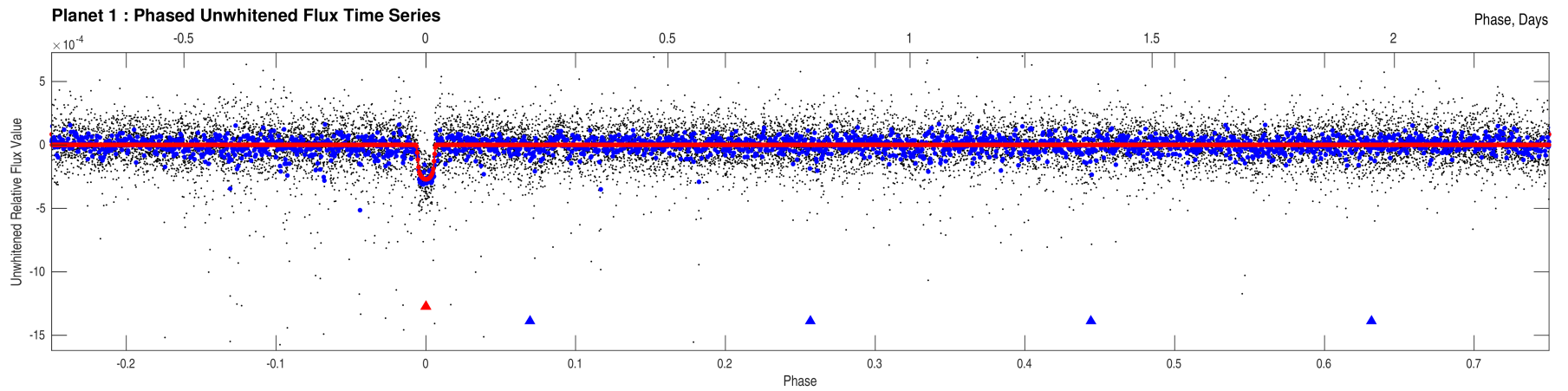


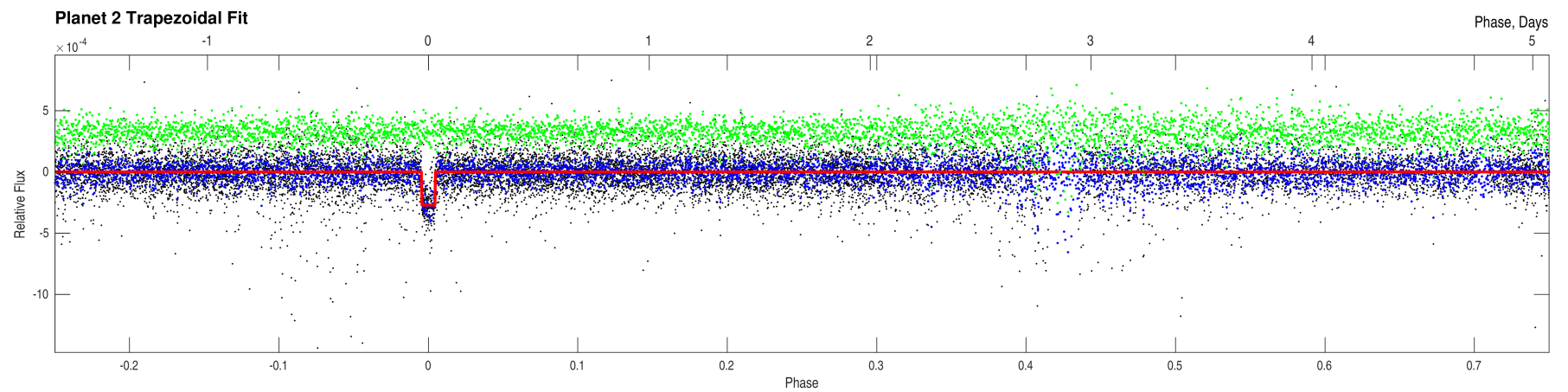
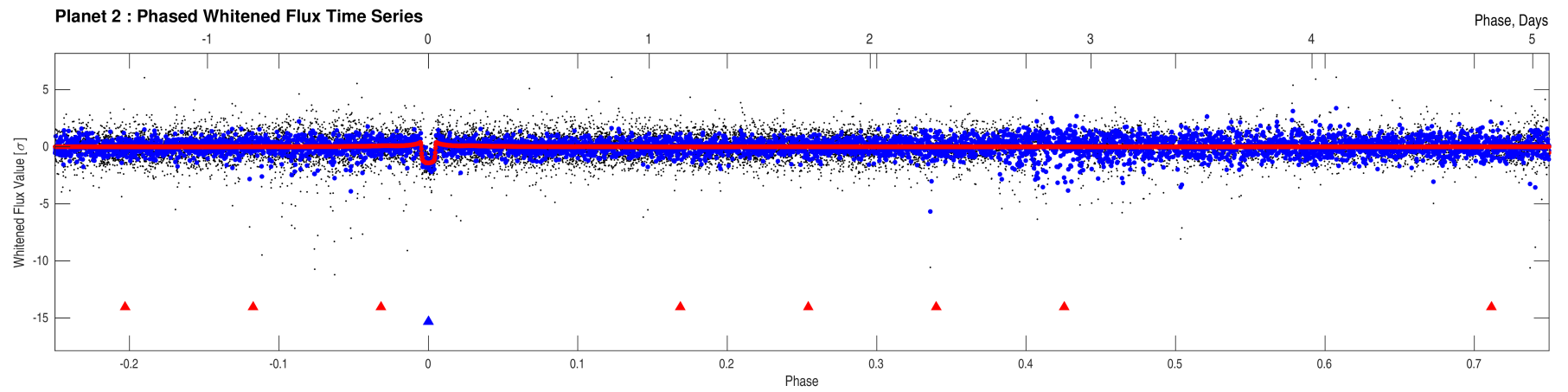
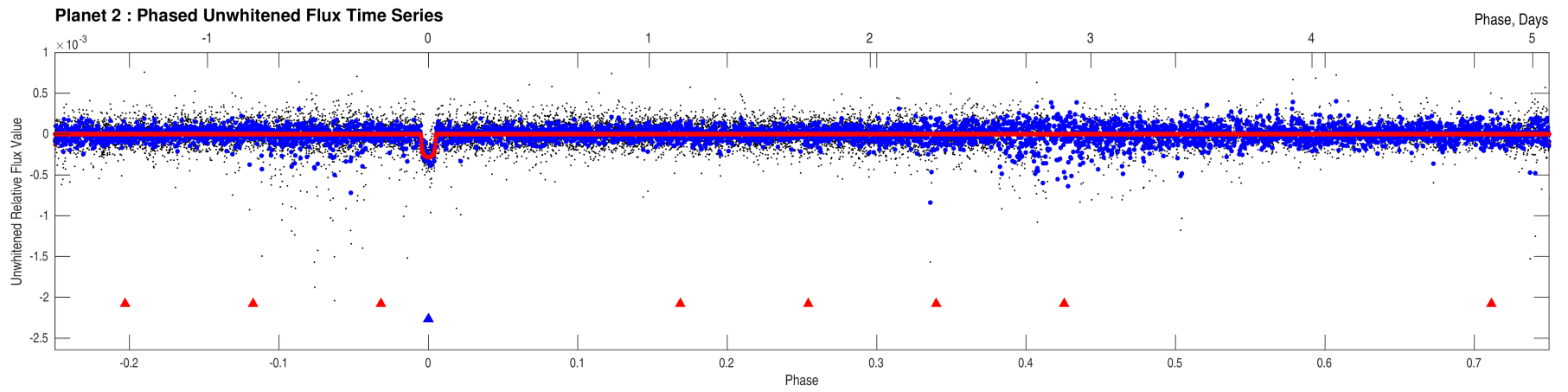
Offsets Relative to TIC Position





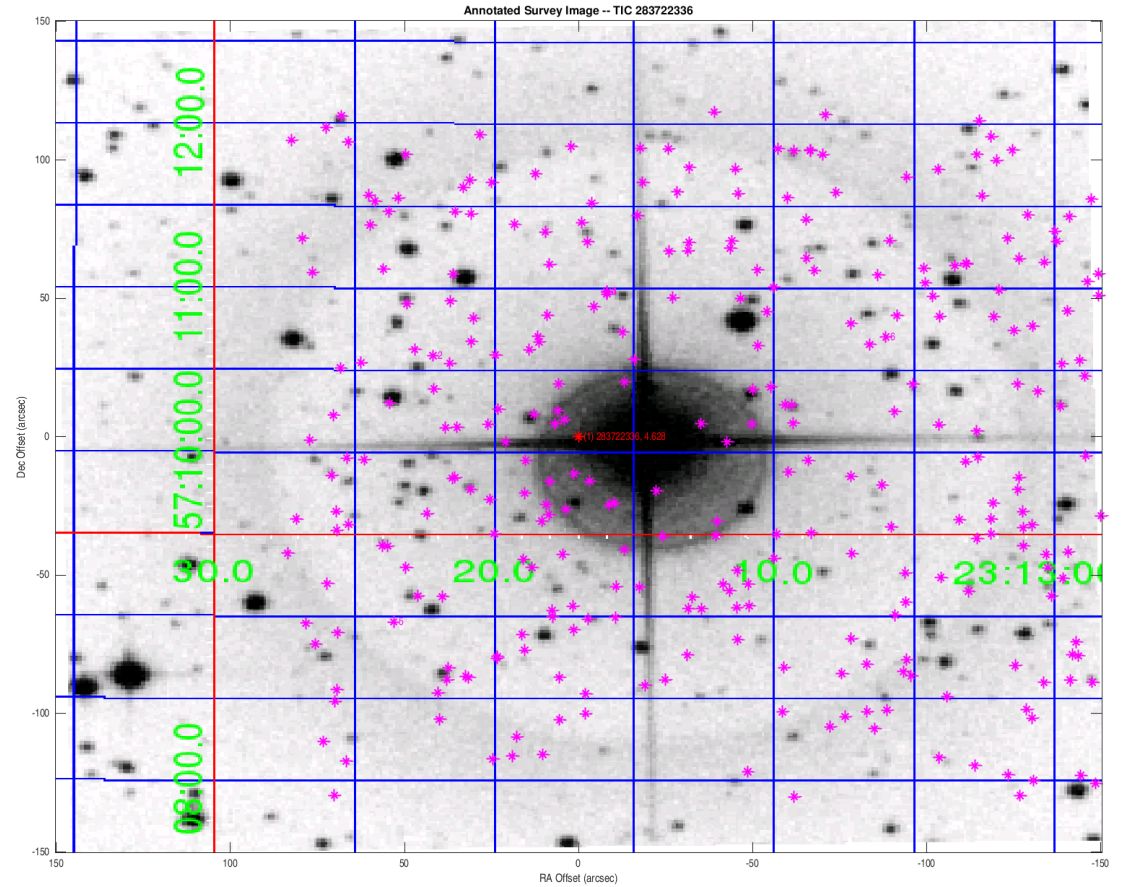






Stellar Distance Table

Index	TIC ID	TESS Mag	Distance (arcsec)
1	0000000283722336	4.63	0.00
2	0000000283722382	13.01	51.04
3	0000000283722412	13.04	52.96
4	00000002047267705	13.46	53.01
5	0000000283722251	12.54	85.39
6	0000000283722394	10.99	95.32



Distances are corrected for proper motion. This table may not contain all of the objects shown.