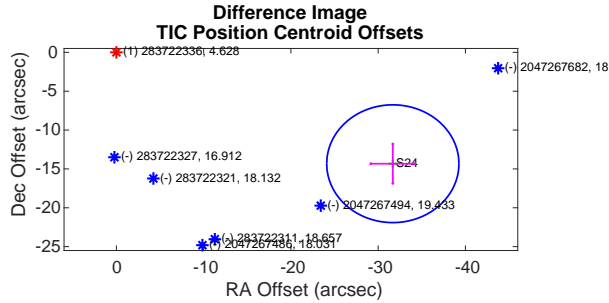
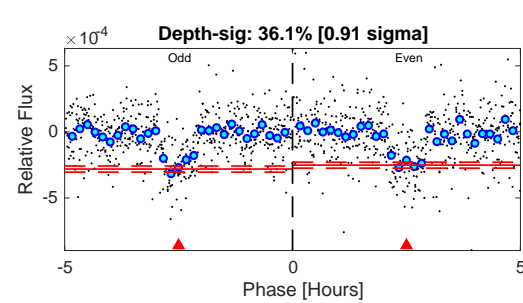
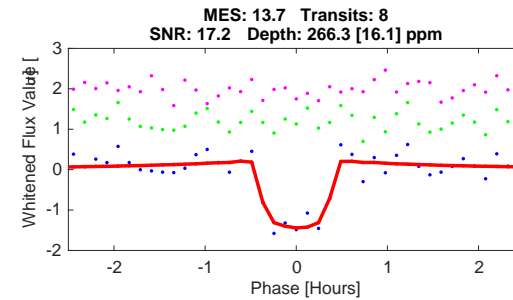
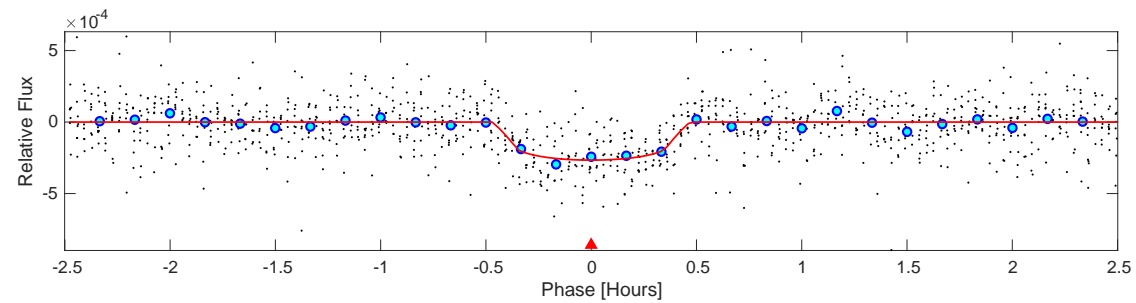
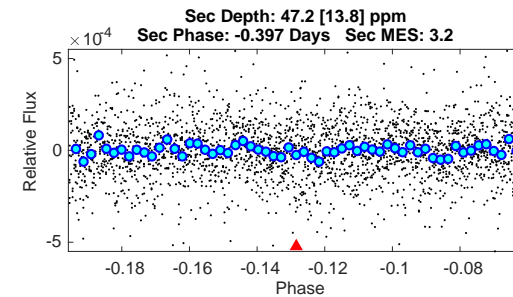
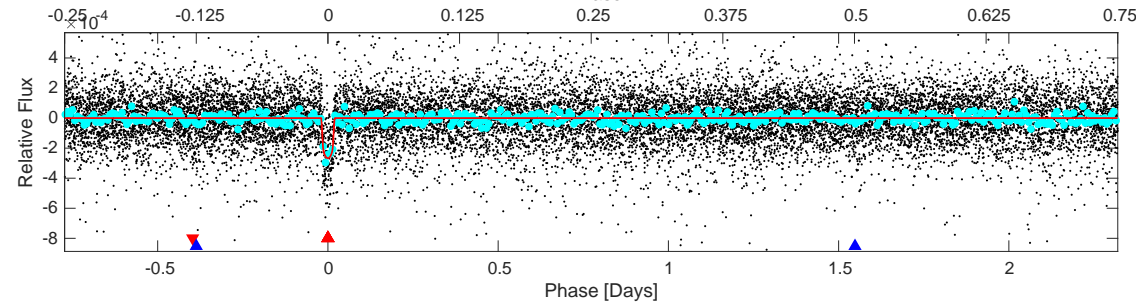
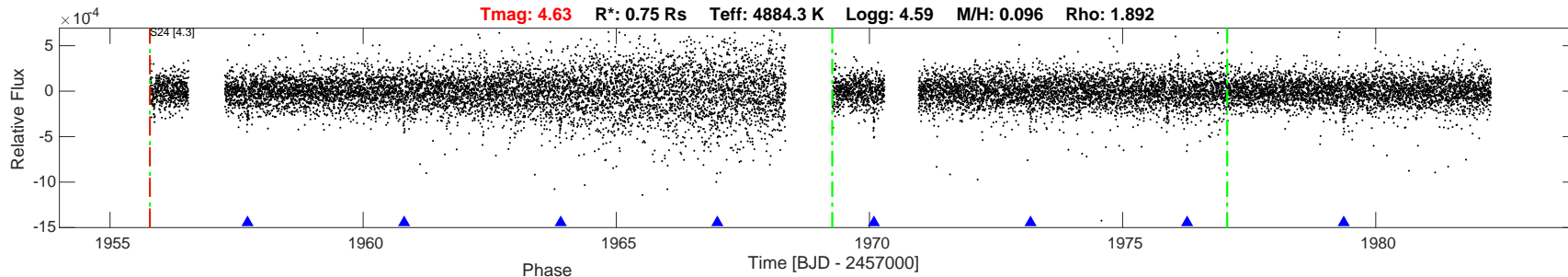


TIC: 283722336 Candidate: 1 of 2 Period: 3.093 d
TOI: 1469.01 Corr: 0.764

Tmag: 4.63 R*: 0.75 Rs Teff: 4884.3 K Logg: 4.59 M/H: 0.096 Rho: 1.892



DV Fit Results:

Period = 3.09313 [0.00023] d
Epoch = 1957.7159 [0.0009] BTJD
Rp/R* = 0.0148 [0.0109]
a/R* = 28.69 [87.58]
b = 0.07 [41.23]
Seff = 192.91 [38.30]
Teff = 951 [47] K
Rp = 1.21 [0.90] Re
a = 0.0386 [0.0035] AU
Rho = 33.167 [303.728]
Ag = 26.31 [39.64] [0.64 sigma]
Tp = 3328 [1250] K [1.90 sigma]

DV Diagnostic Results:

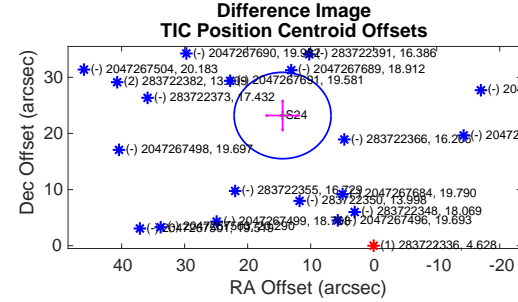
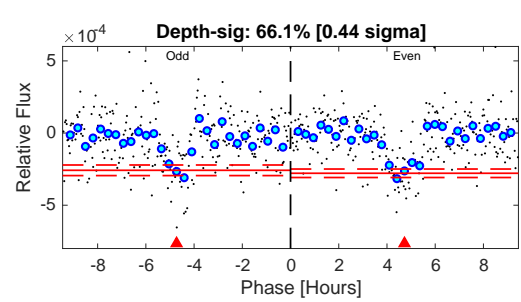
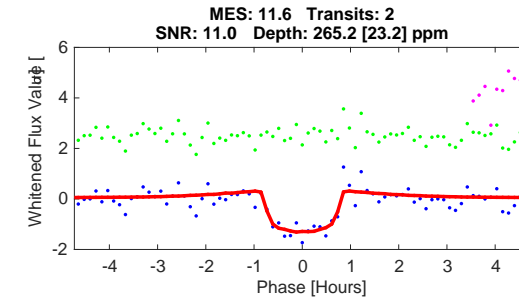
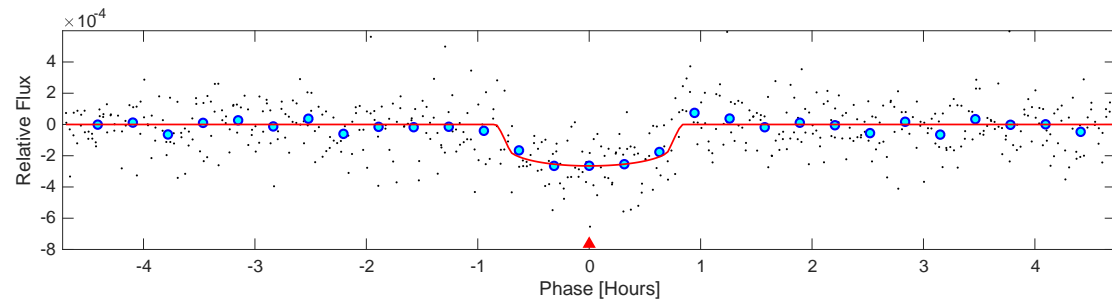
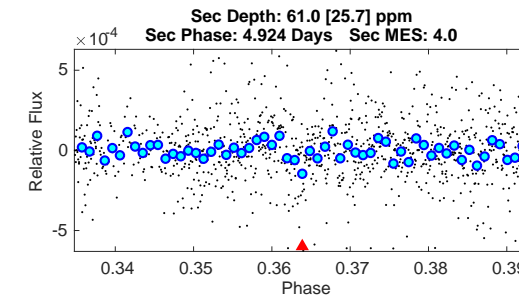
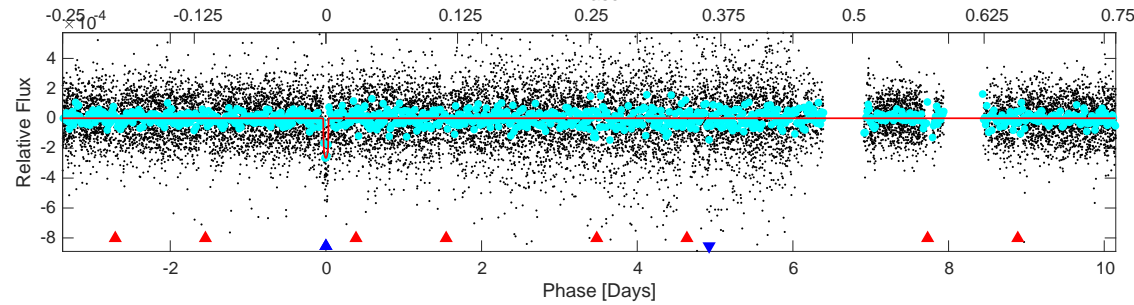
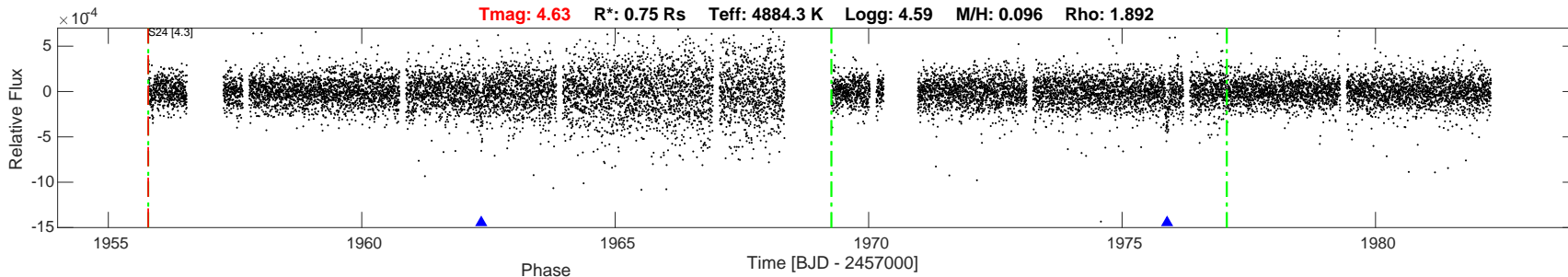
ShortPeriod-sig: N/A
LongPeriod-sig: 100.0% [140.55 sigma]
ModelChiSquare2-sig: 78.2%
ModelChiSquareGof-sig: 100.0%
Bootstrap-pfa: 1.22e-32
GhostDiagnostic-chr: N/A
OotOffset-rm: 33.773 arcsec [13.36 sigma]
TicOffset-rm: 34.771 arcsec [13.77 sigma]
OotOffset-tot: 1
TicOffset-tot: 1
DiffImageQuality-fgm: 0.00 [0/1]
DiffImageOverlap-fno: 1.00 [1/1]

Software Revision: spoc-4.0.36-20200520 -- Date Generated: 23-May-2020 17:47:12 Z

This Data Validation Report Summary was produced in the TESS Science Processing Operations Center Pipeline at NASA Ames Research Center

TIC: 283722336 Candidate: 2 of 2 Period: 13.531 d
TOI: 1469 Corr: No Ephemeris Match

Tmag: 4.63 R*: 0.75 Rs Teff: 4884.3 K Logg: 4.59 M/H: 0.096 Rho: 1.892



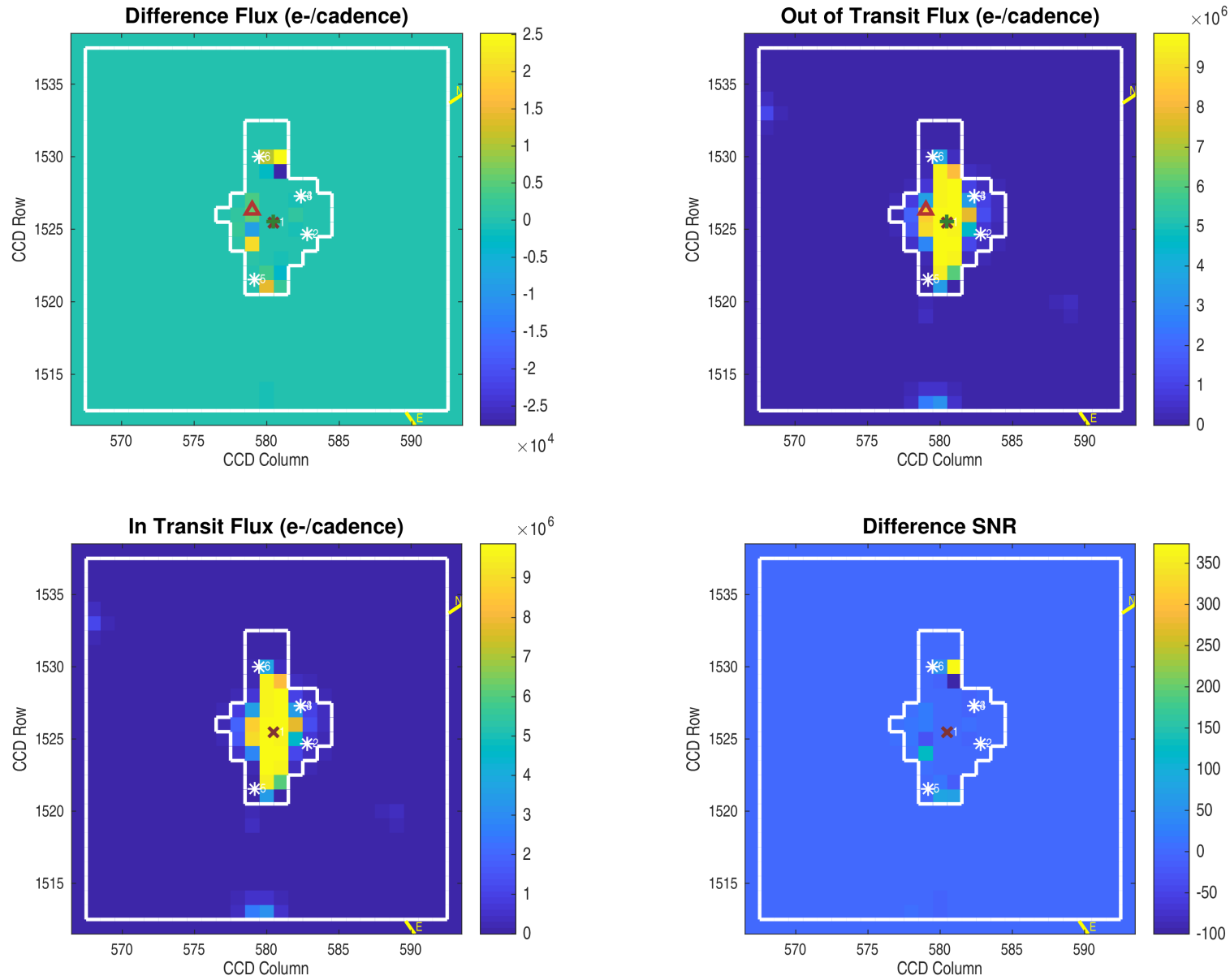
DV Fit Results:
 Period = 13.53085 [0.00239] d
 Epoch = 1962.3571 [0.0019] BTJD
 Rp/R* = 0.0155 [0.0112]
 a/R* = 54.40 [167.54]
 b = 0.59 [3.51]
 Seff = 26.96 [5.35]
 Teq = 581 [29] K
 Rp = 1.27 [0.92] Re
 a = 0.1032 [0.0095] AU
 Rho = 11.816 [109.163]
 Ag = 221.54 [335.16] [0.66 sigma]
 Tp = 3467 [1308] K [2.21 sigma]

DV Diagnostic Results:
 ShortPeriod-sig: 100.0% [140.55 sigma]
 LongPeriod-sig: N/A
 ModelChiSquare2-sig: 62.5%
 ModelChiSquareGof-sig: 100.0%
 Bootstrap-pfa: 8.69e-14
 GhostDiagnostic-chr: N/A
 OotOffset-rm: 27.600 arcsec [10.77 sigma]
 TicOffset-rm: 27.331 arcsec [10.66 sigma]
 OotOffset-tot: 1
 TicOffset-tot: 1
 DiffImageQuality-fgm: 0.00 [0/1]
 DiffImageOverlap-fno: 1.00 [1/1]

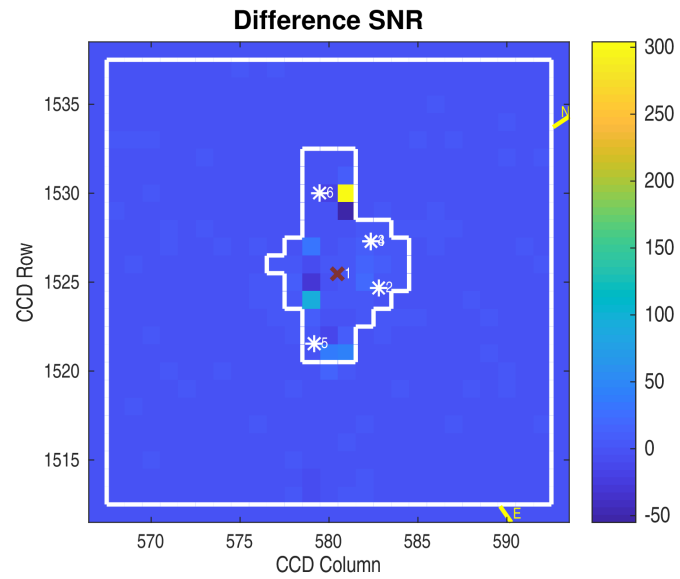
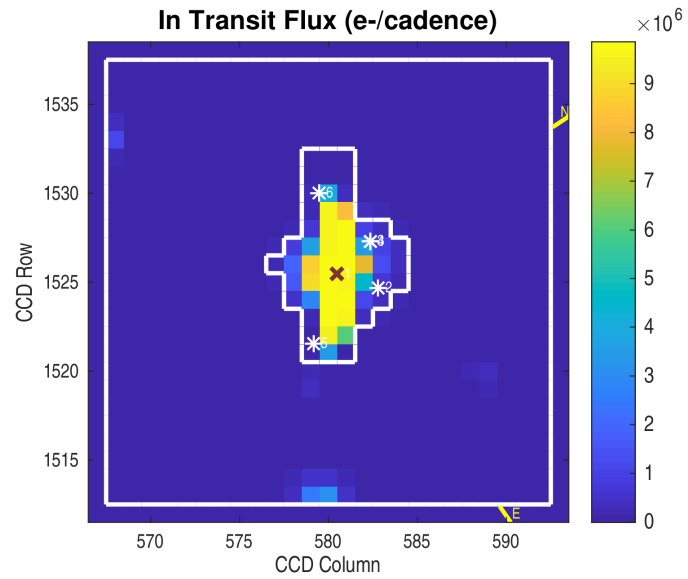
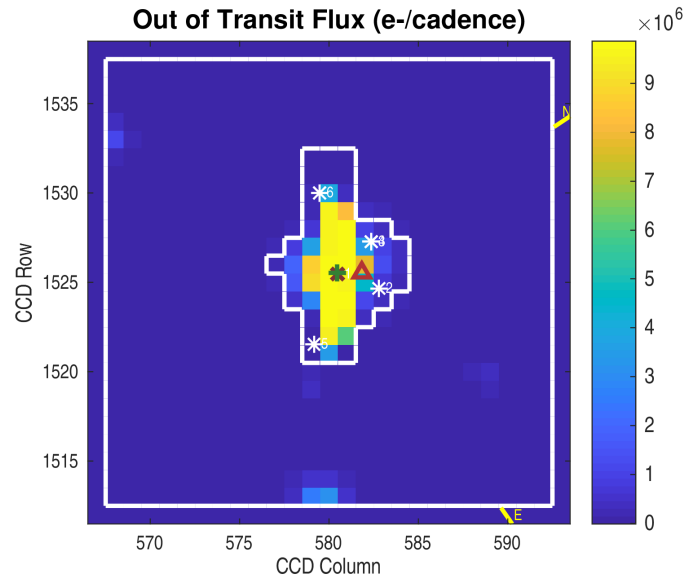
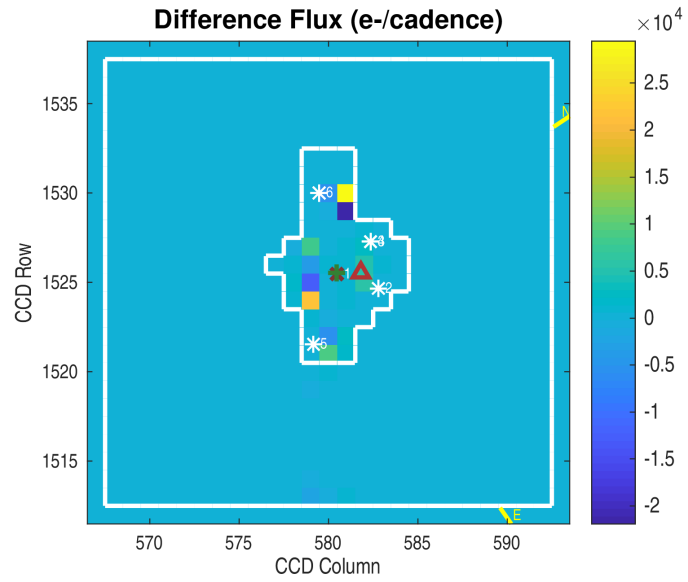
Software Revision: spoc-4.0.36-20200520 -- Date Generated: 23-May-2020 17:47:19 Z

This Data Validation Report Summary was produced in the TESS Science Processing Operations Center Pipeline at NASA Ames Research Center

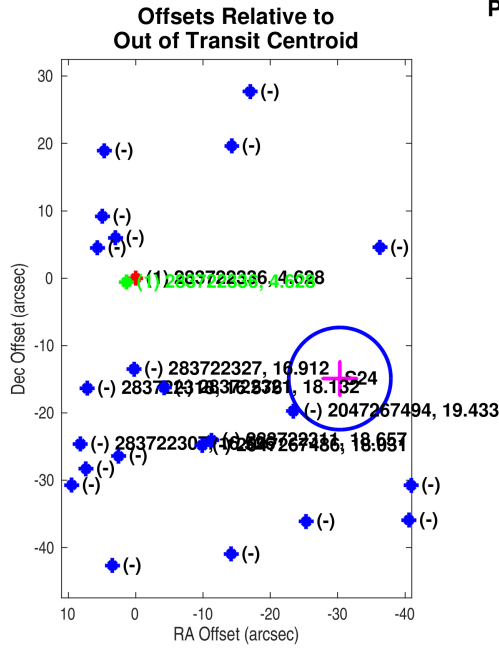
Planet Candidate 1 / Sector 24 / Target Pixel Table 242



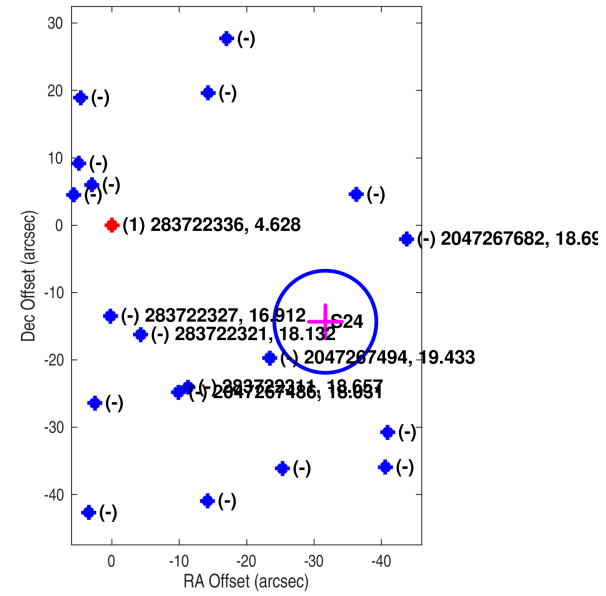
Planet Candidate 2 / Sector 24 / Target Pixel Table 242



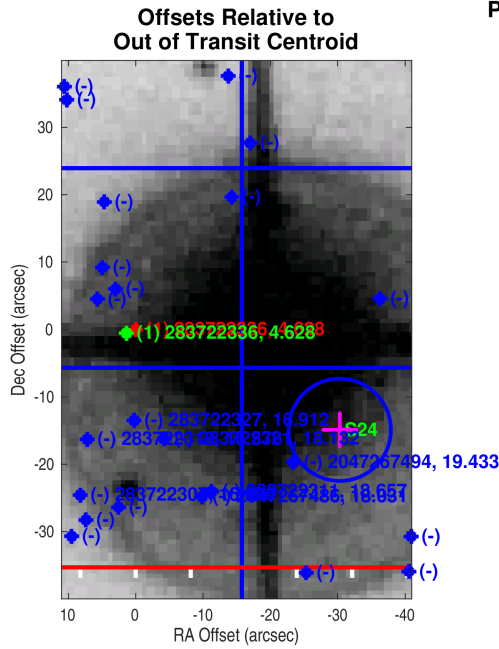
Planet Candidate 1



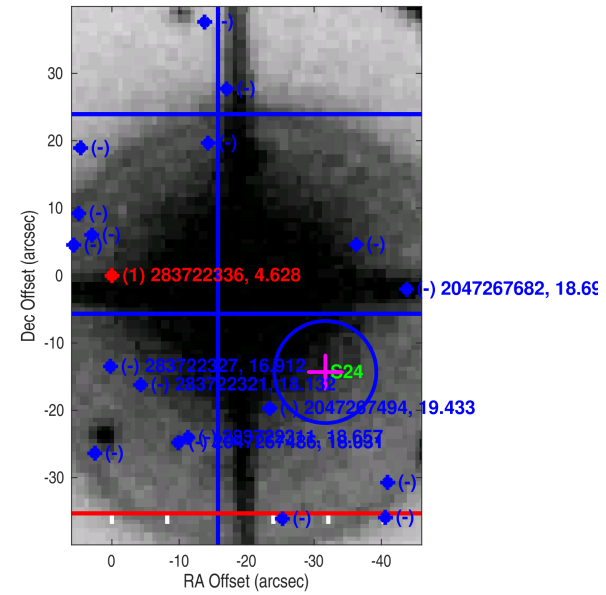
Offsets Relative to TIC Position

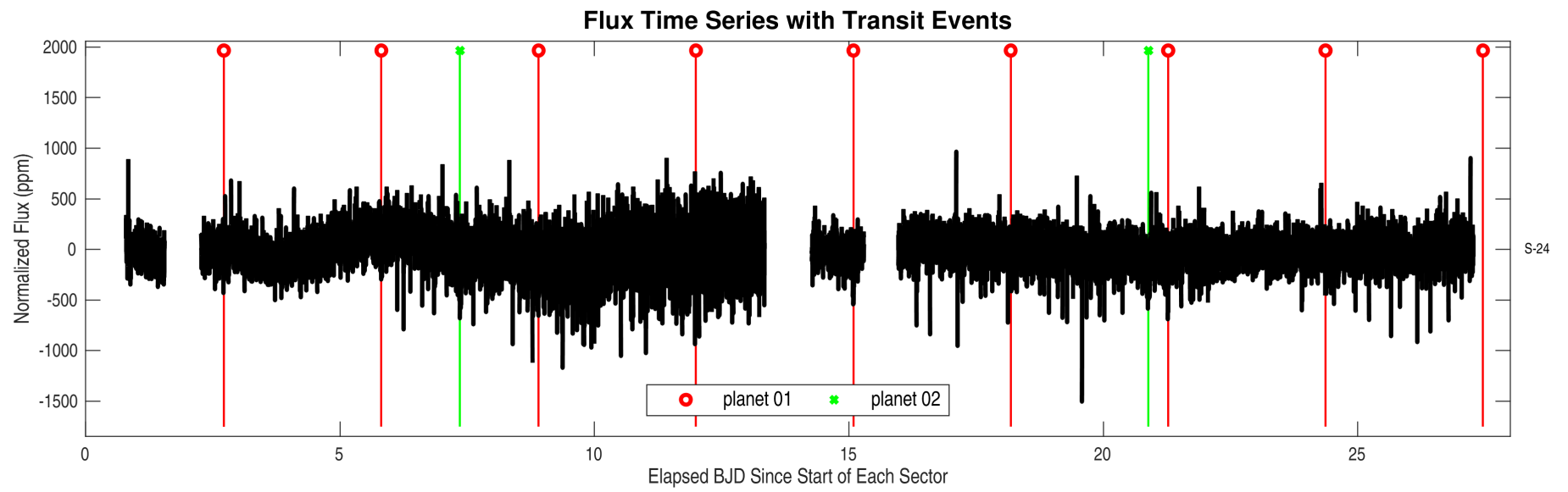
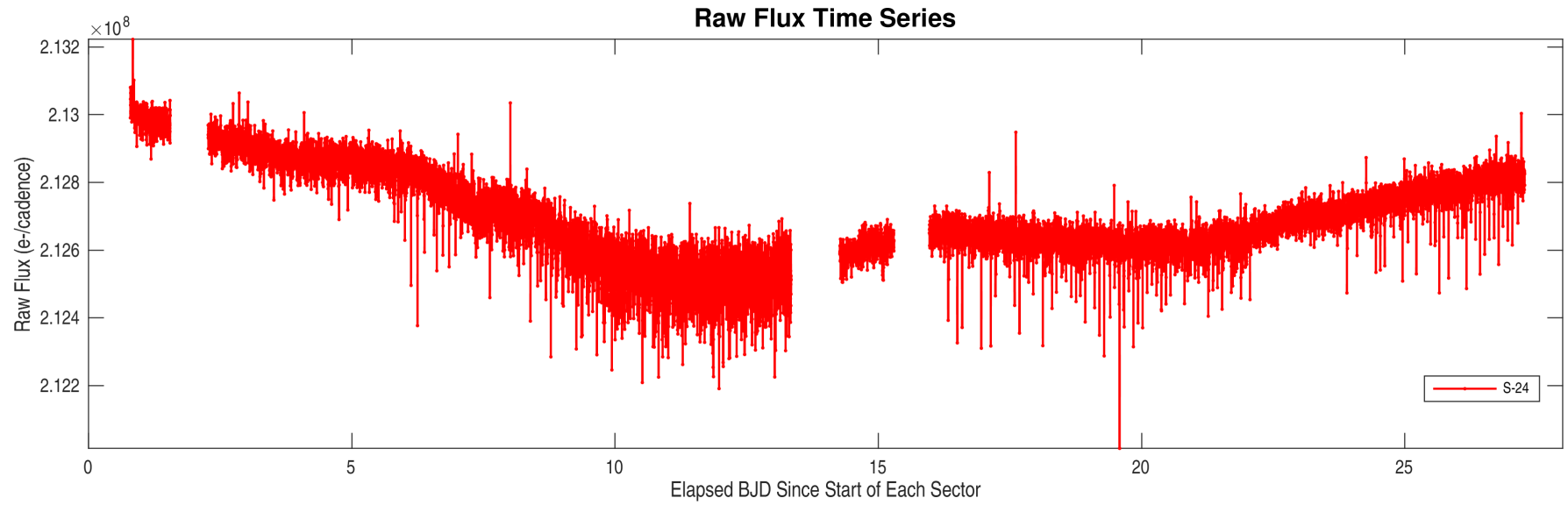


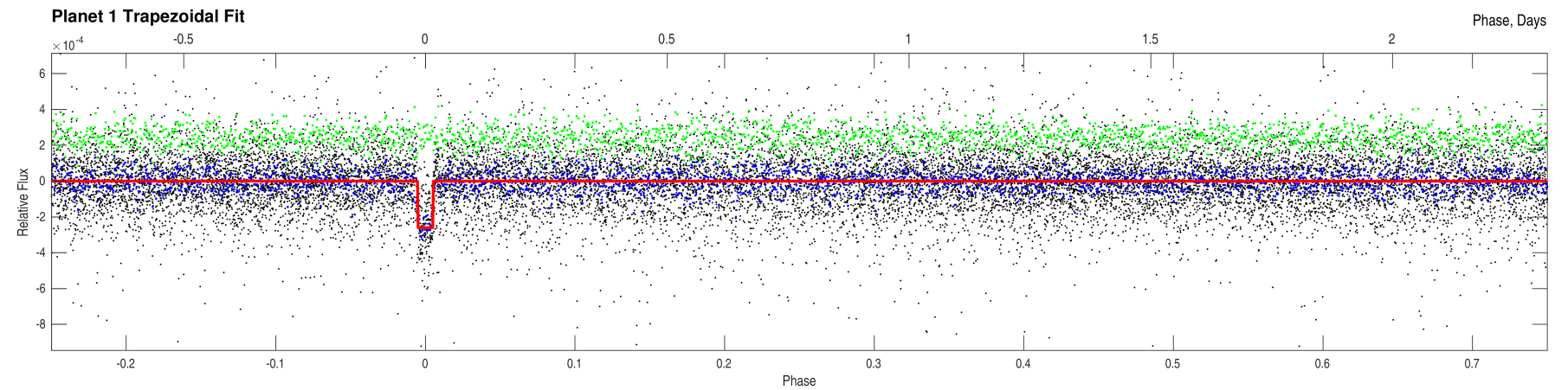
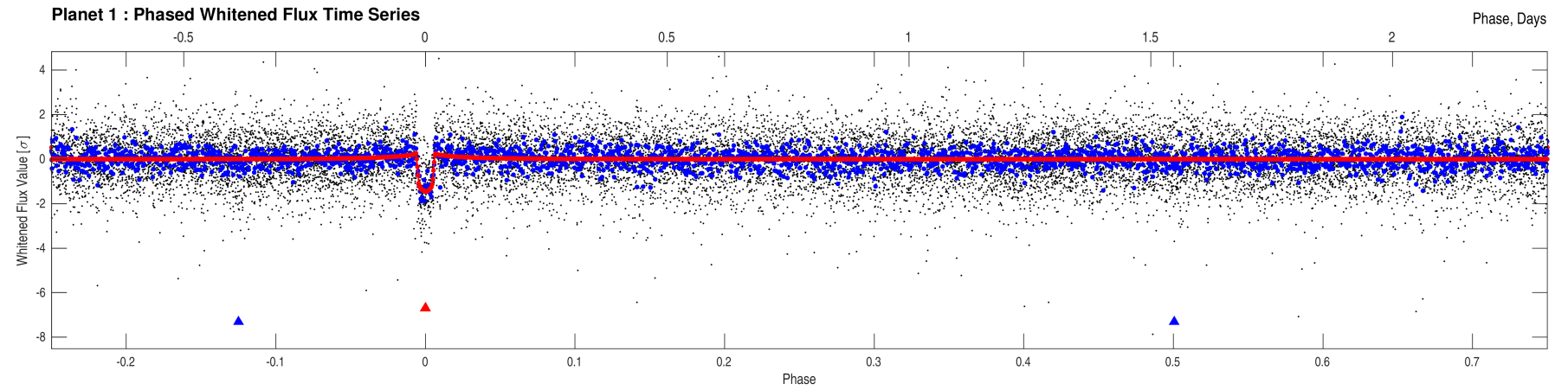
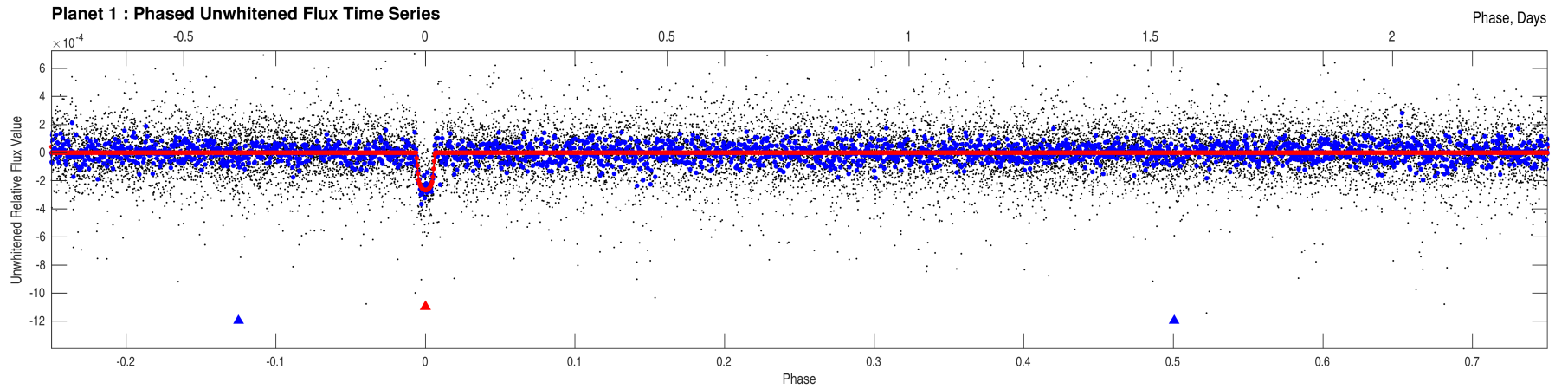
Planet Candidate 1

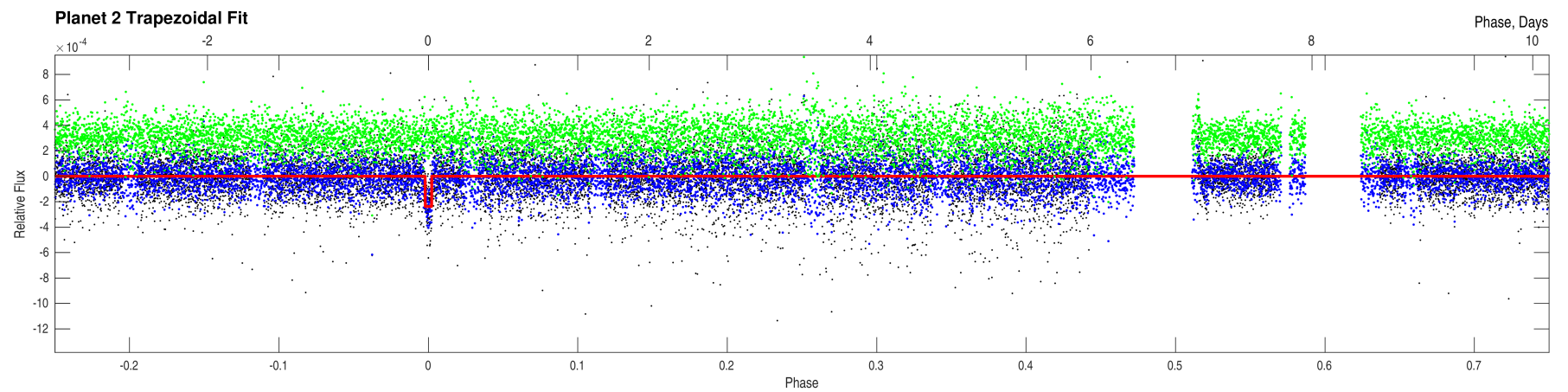
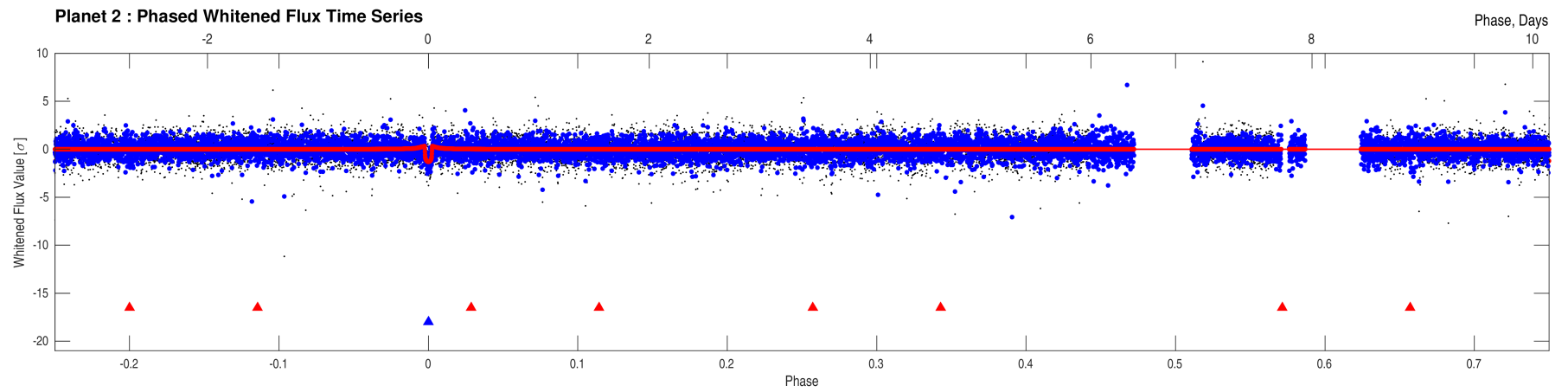
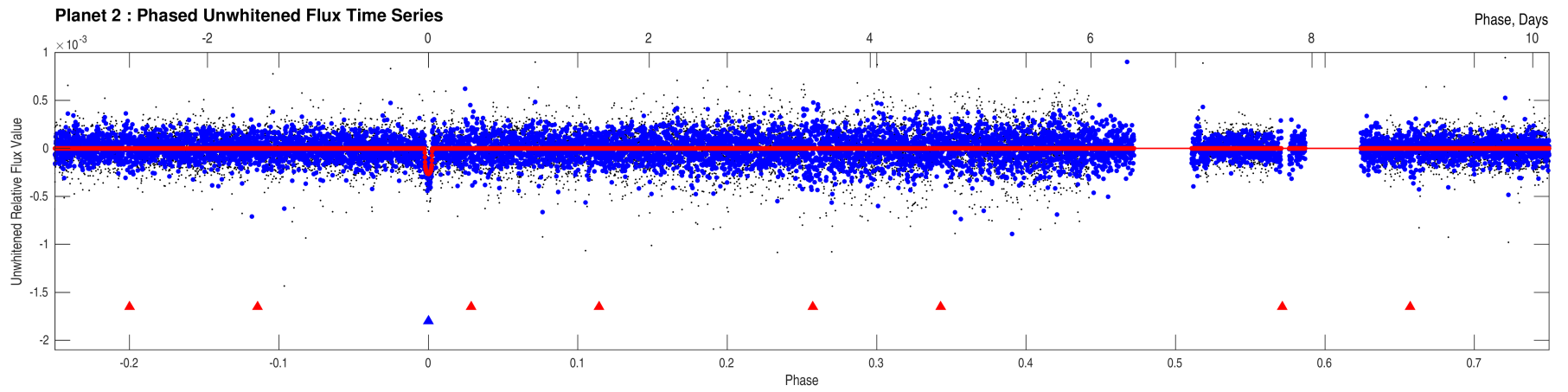


Offsets Relative to TIC Position



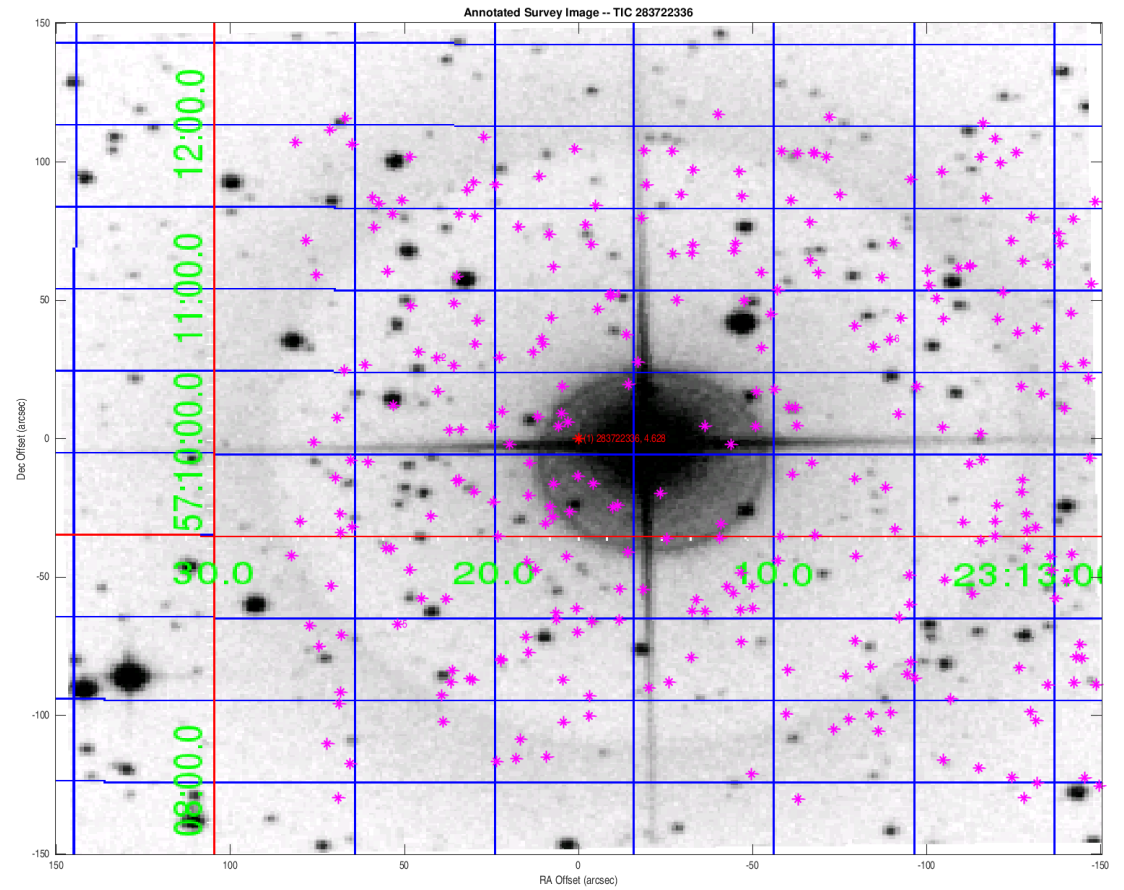






Stellar Distance Table

Index	TIC ID	TESS Mag	Distance (arcsec)
1	0000000283722336	4.63	0.00
2	0000000283722382	13.01	50.05
3	0000000283722412	13.04	53.00
4	00000002047267705	13.46	53.04
5	0000000283722251	12.54	84.84
6	0000000283722394	10.99	96.27



Distances are corrected for proper motion. This table may not contain all of the objects shown.