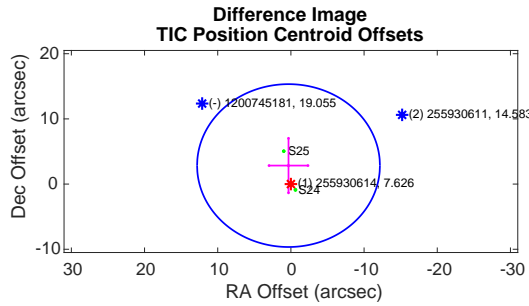
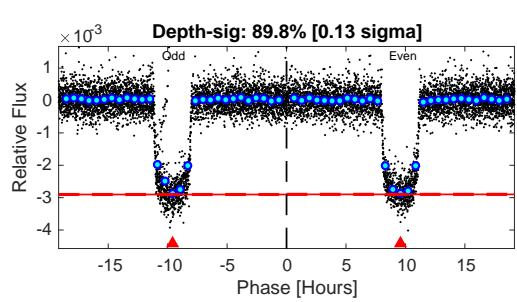
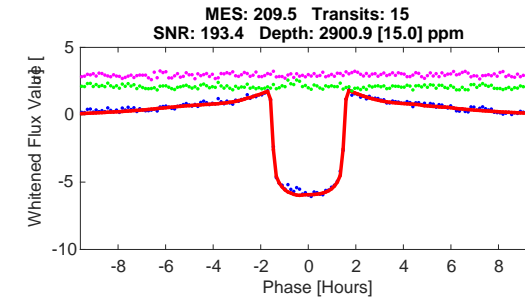
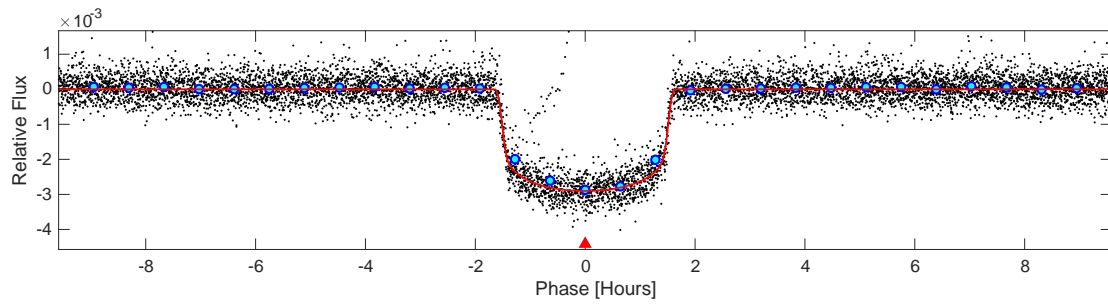
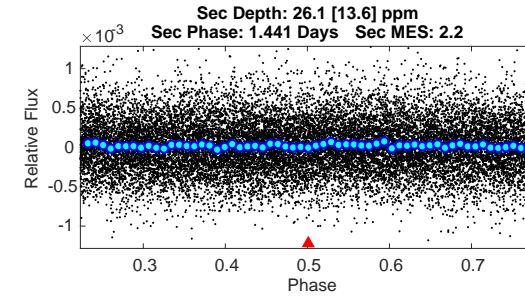
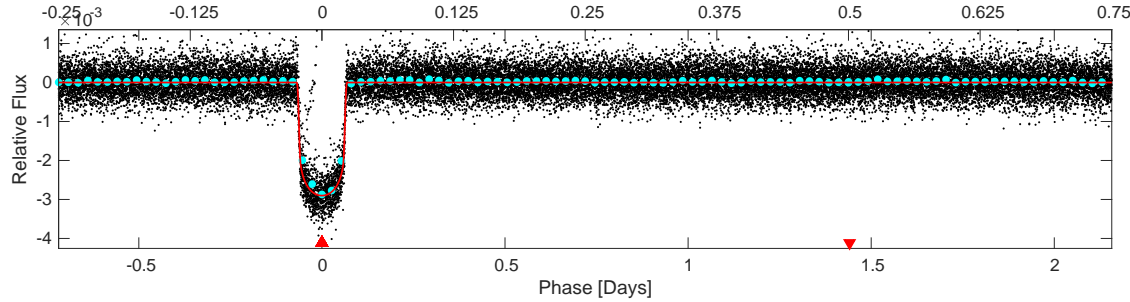
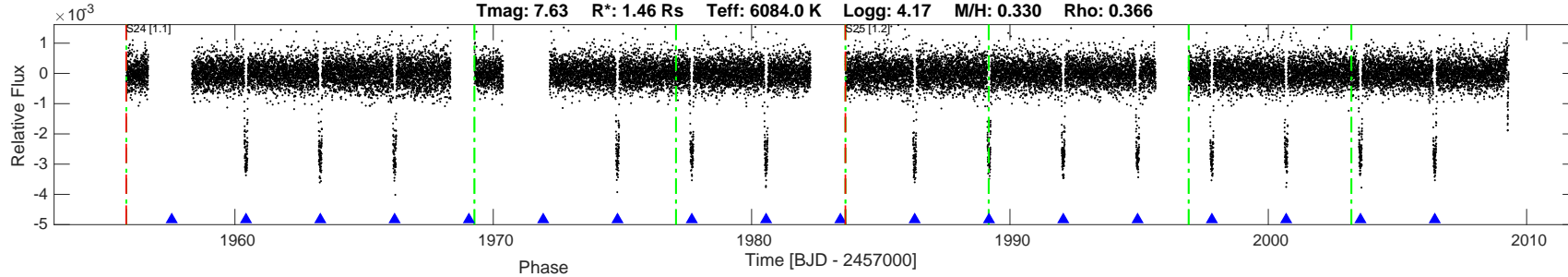


TIC: 255930614 Candidate: 1 of 1 Period: 2.876 d
 TOI: 2024.01 Corr: 0.991

Tmag: 7.63 R*: 1.46 Rs Teff: 6084.0 K Logg: 4.17 M/H: 0.330 Rho: 0.366



DV Fit Results:

Period = 2.87593 [0.00002] d
 Epoch = 1957.5536 [0.0002] BTJD
 Rp/R* = 0.0500 [0.0006]
 a/R* = 7.20 [0.48]
 b = 0.11 [0.61]
 Seff = 1529.95 [250.51]
 Teq = 1595 [65] K
 Rp = 7.97 [0.41] Re
 a = 0.0414 [0.0030] AU
 Rho = 0.608 [0.122]
 Ag = 0.39 [0.21] [-2.95 sigma]
 Tp = 1945 [257] K [1.32 sigma]

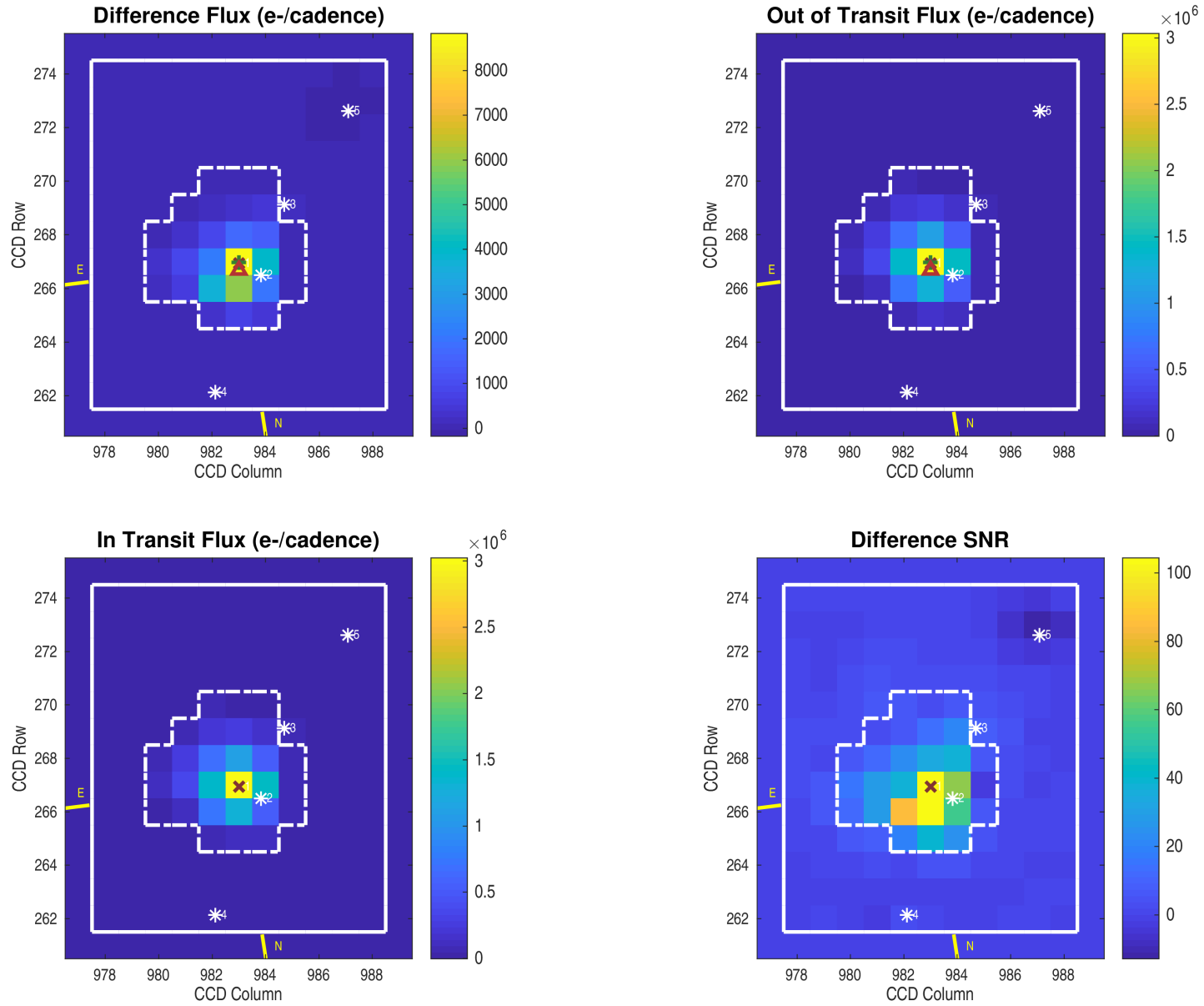
DV Diagnostic Results:

ShortPeriod-sig: N/A
 LongPeriod-sig: N/A
 ModelChiSquare2-sig: 0.2%
 ModelChiSquareGof-sig: 100.0%
 Bootstrap-pfa: 0.00e+00
 GhostDiagnostic-chr: 6.969
 OotOffset-rm: 3.286 arcsec [0.74 sigma]
 TicOffset-rm: 2.858 arcsec [0.69 sigma]
 OotOffset-tot: 2
 TicOffset-tot: 2
 DiffImageQuality-fgm: 1.00 [2/2]
 DiffImageOverlap-fno: 1.00 [2/2]

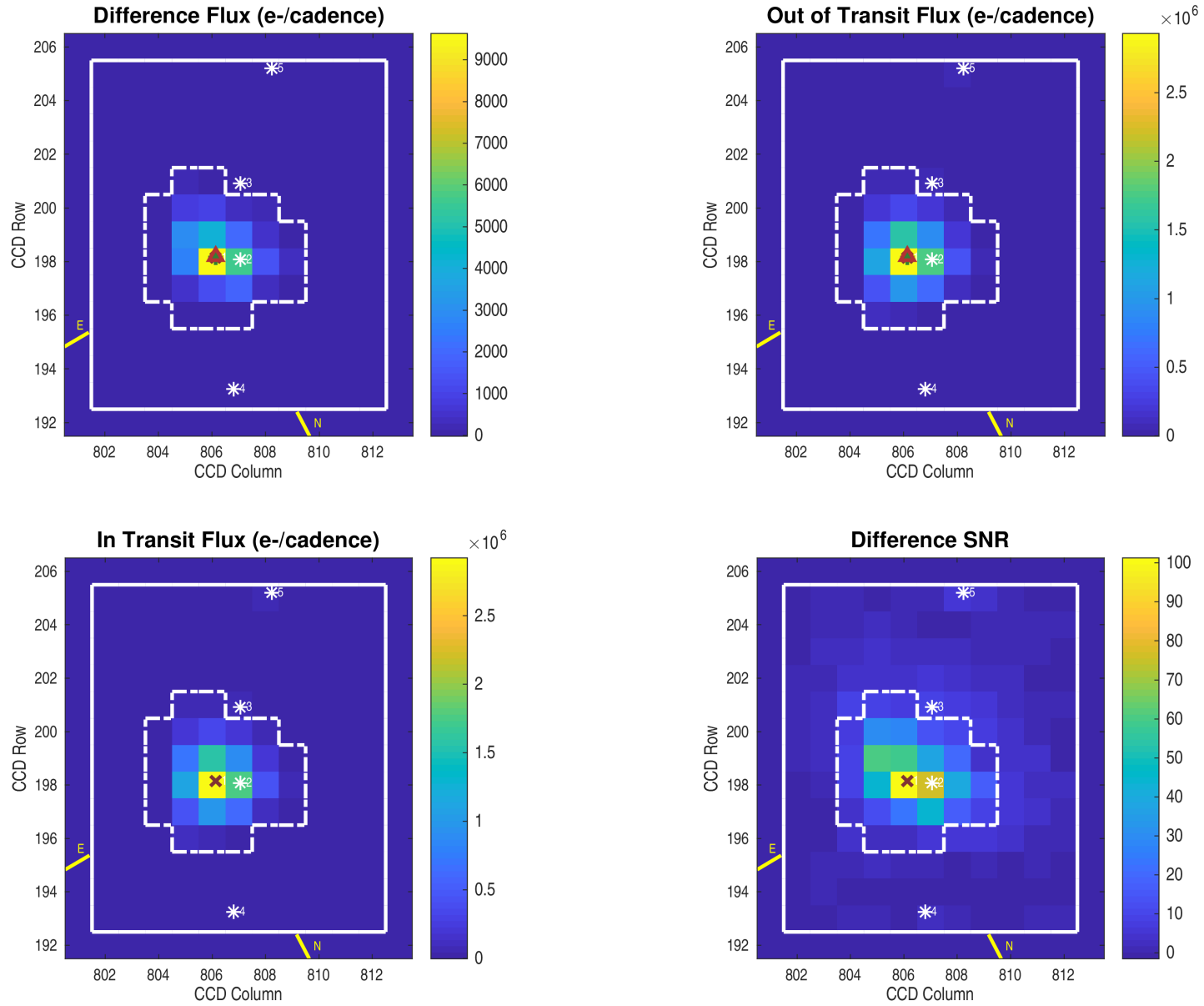
Software Revision: spoc-5.0.5-20200728 -- Date Generated: 02-Aug-2020 11:47:22 Z

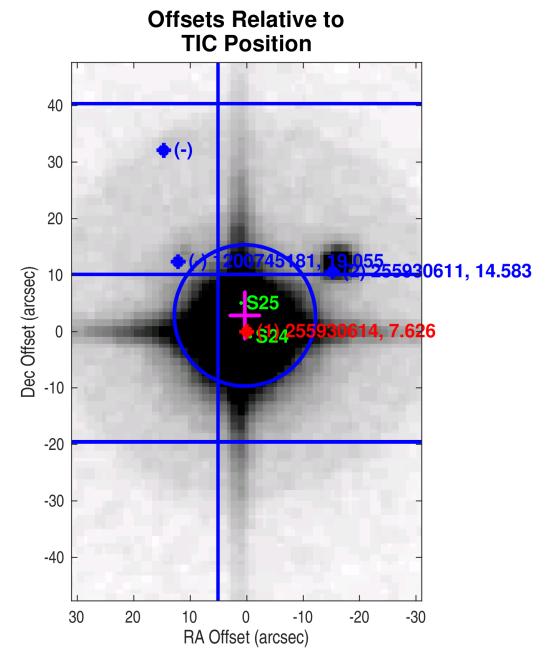
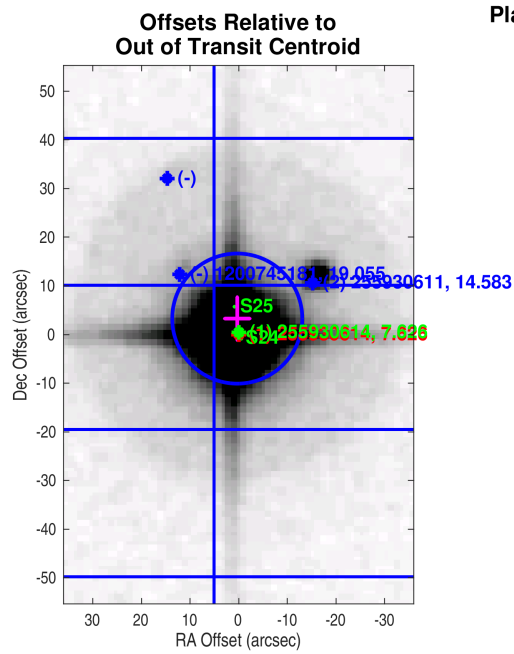
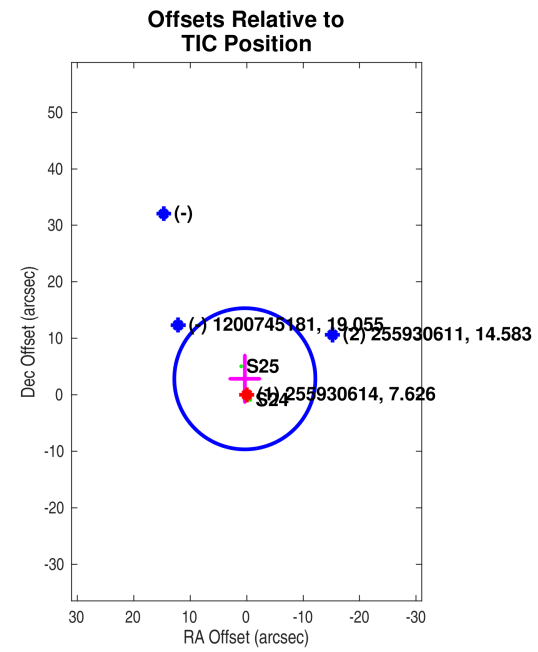
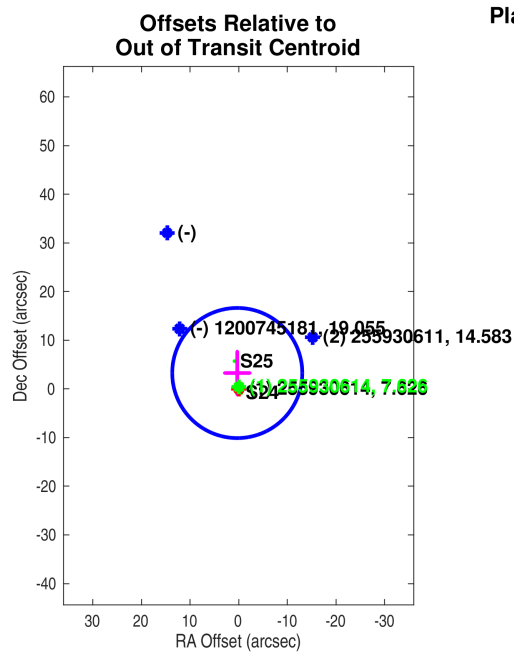
This Data Validation Report Summary was produced in the TESS Science Processing Operations Center Pipeline at NASA Ames Research Center

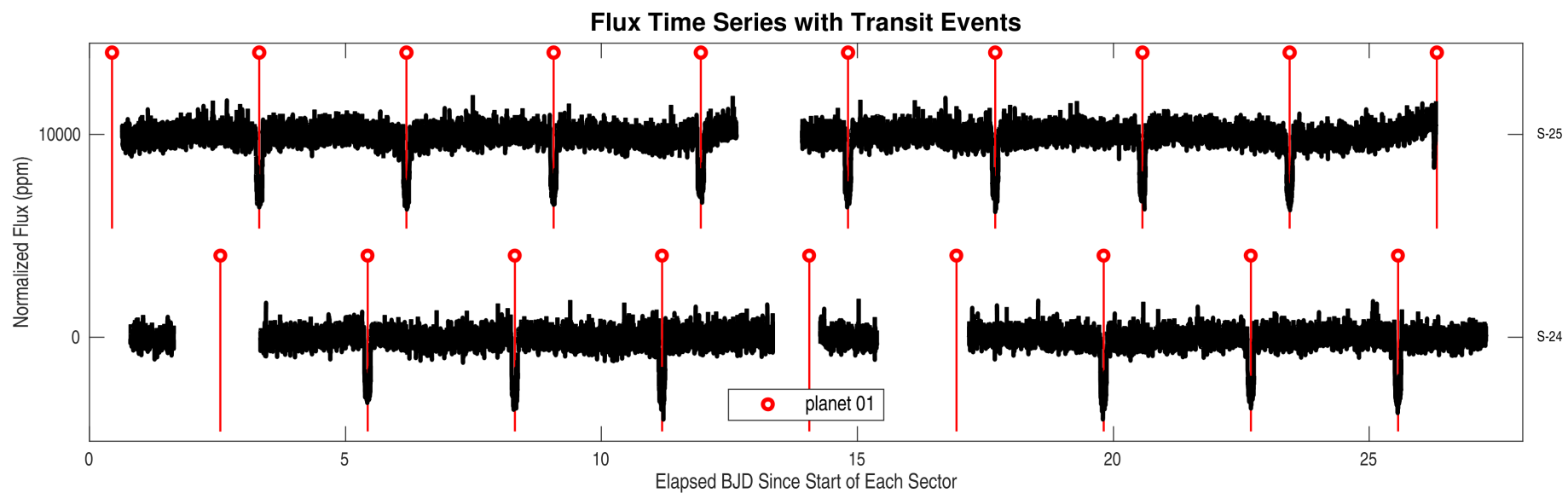
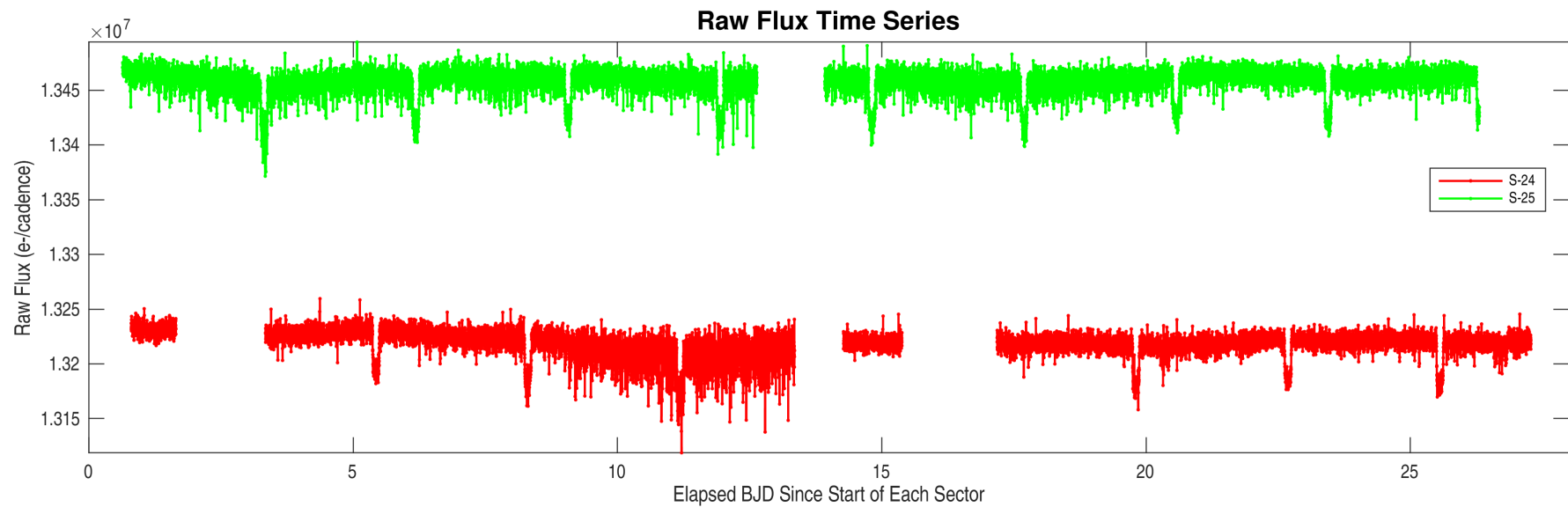
Planet Candidate 1 / Sector 25 / Target Pixel Table 245

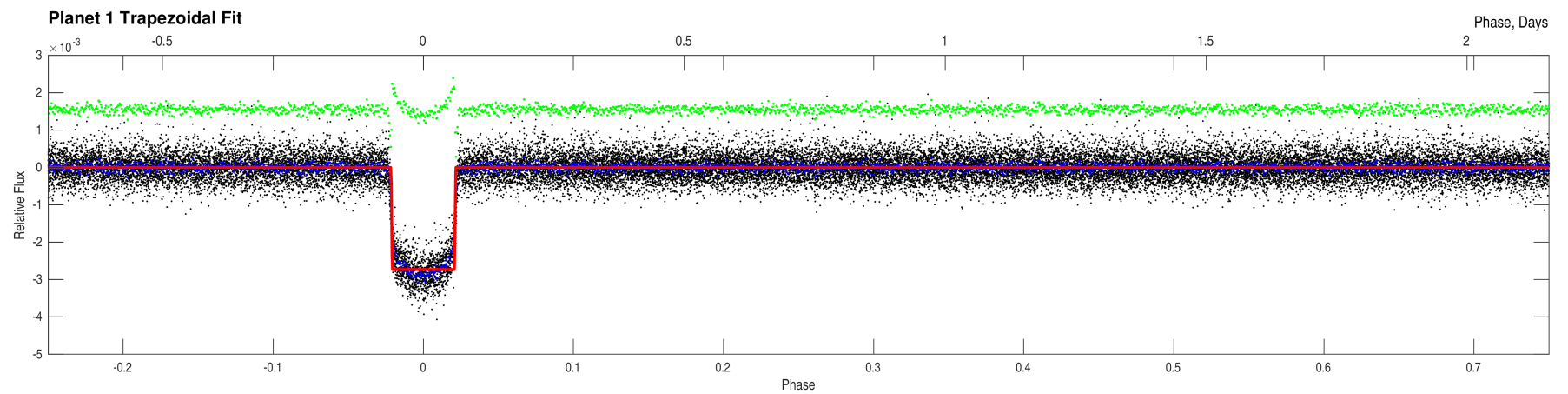
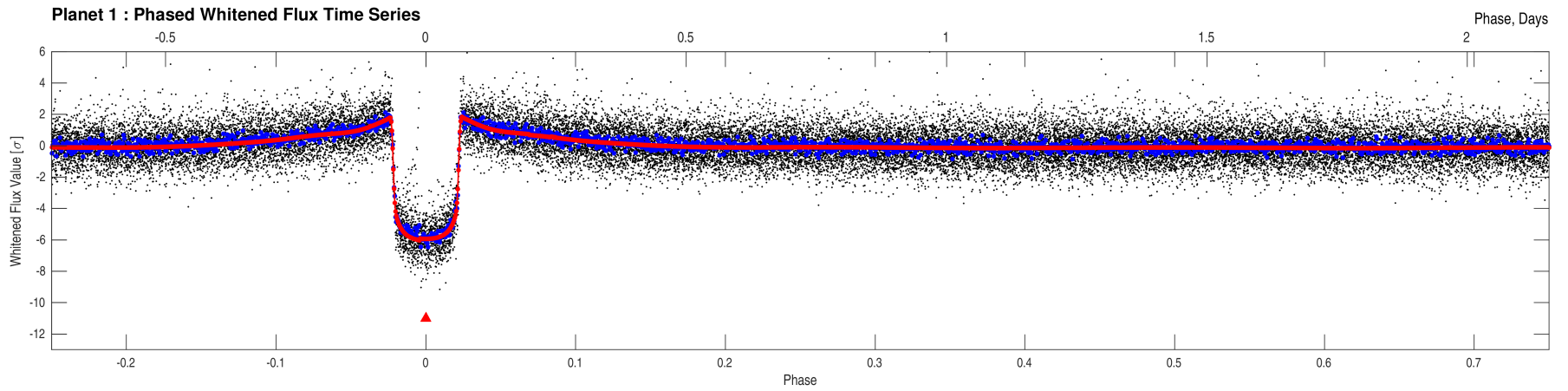
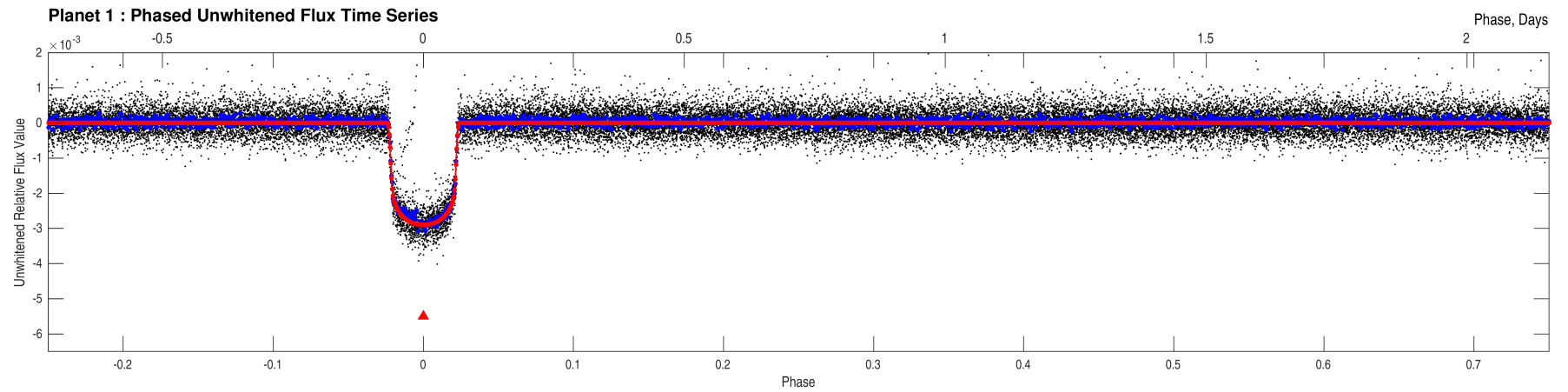


Planet Candidate 1 / Sector 24 / Target Pixel Table 242

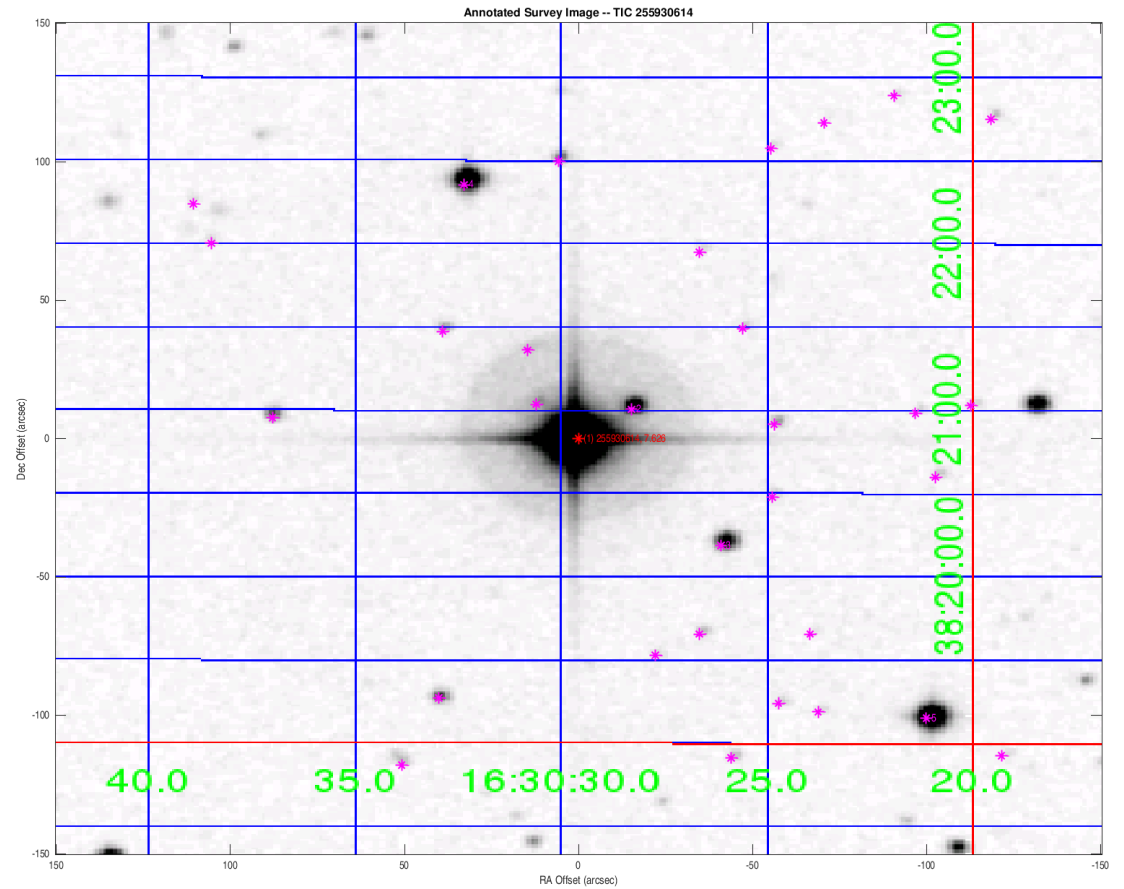








Index	TIC ID	TESS Mag	Distance (arcsec)
1	0000000255930614	7.63	0.00
2	0000000255930611	14.58	18.54
3	0000000255930617	14.56	56.23
4	0000000255930603	12.46	97.42
5	0000000255930620	11.99	142.00



Distances are corrected for proper motion. This table may not contain all of the objects shown.