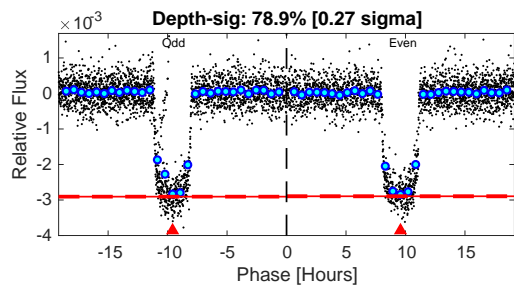
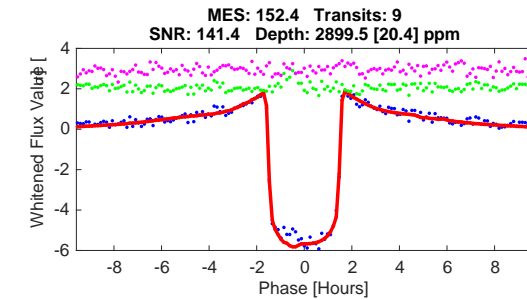
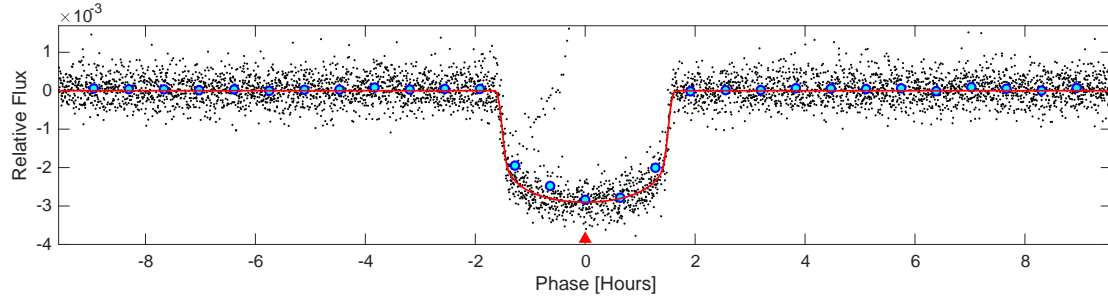
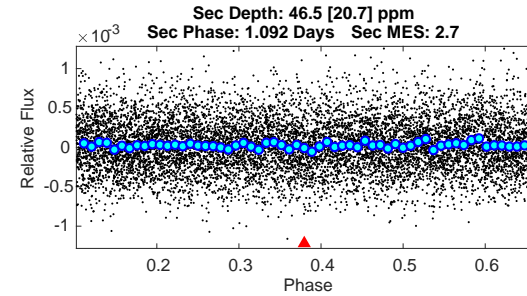
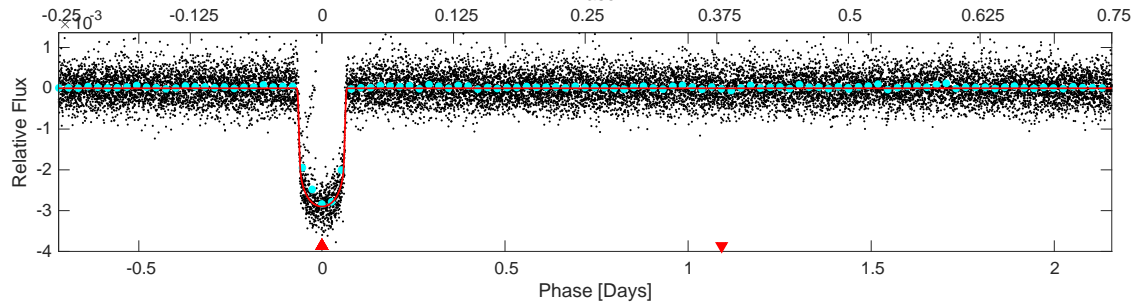
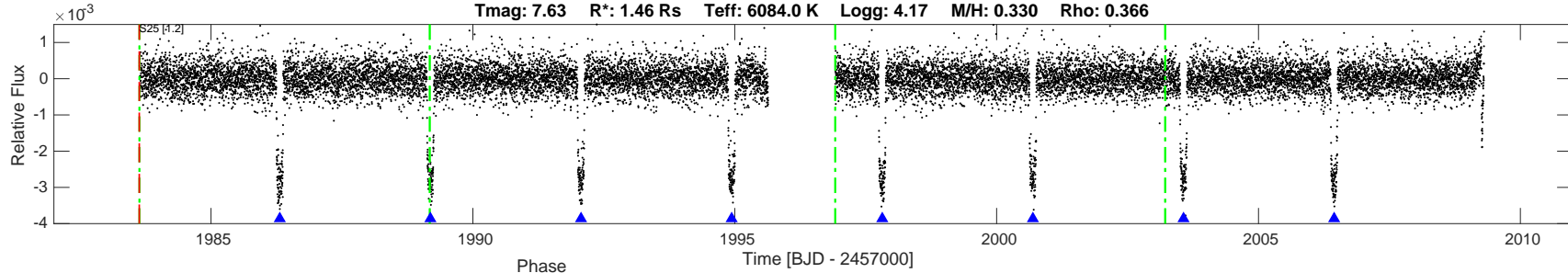
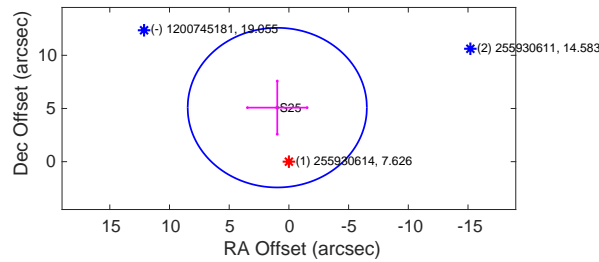


TIC: 255930614 Candidate: 1 of 1 Period: 2.876 d  
TOI: 2024.01 Corr: 0.994

Tmag: 7.63 R\*: 1.46 Rs Teff: 6084.0 K Logg: 4.17 M/H: 0.330 Rho: 0.366



Difference Image  
TIC Position Centroid Offsets



DV Fit Results:

Period = 2.87589 [0.00006] d  
Epoch = 1986.3131 [0.0003] BTJD  
Rp/R\* = 0.0500 [0.0008]  
a/R\* = 7.17 [0.60]  
b = 0.16 [0.53]  
Seff = 1529.98 [250.52]  
Teq = 1595 [65] K  
Rp = 7.97 [0.42] Re  
a = 0.0414 [0.0030] AU  
Rho = 0.599 [0.151]  
Ag = 0.69 [0.32] [-0.97 sigma]  
Tp = 2247 [256] K [2.47 sigma]

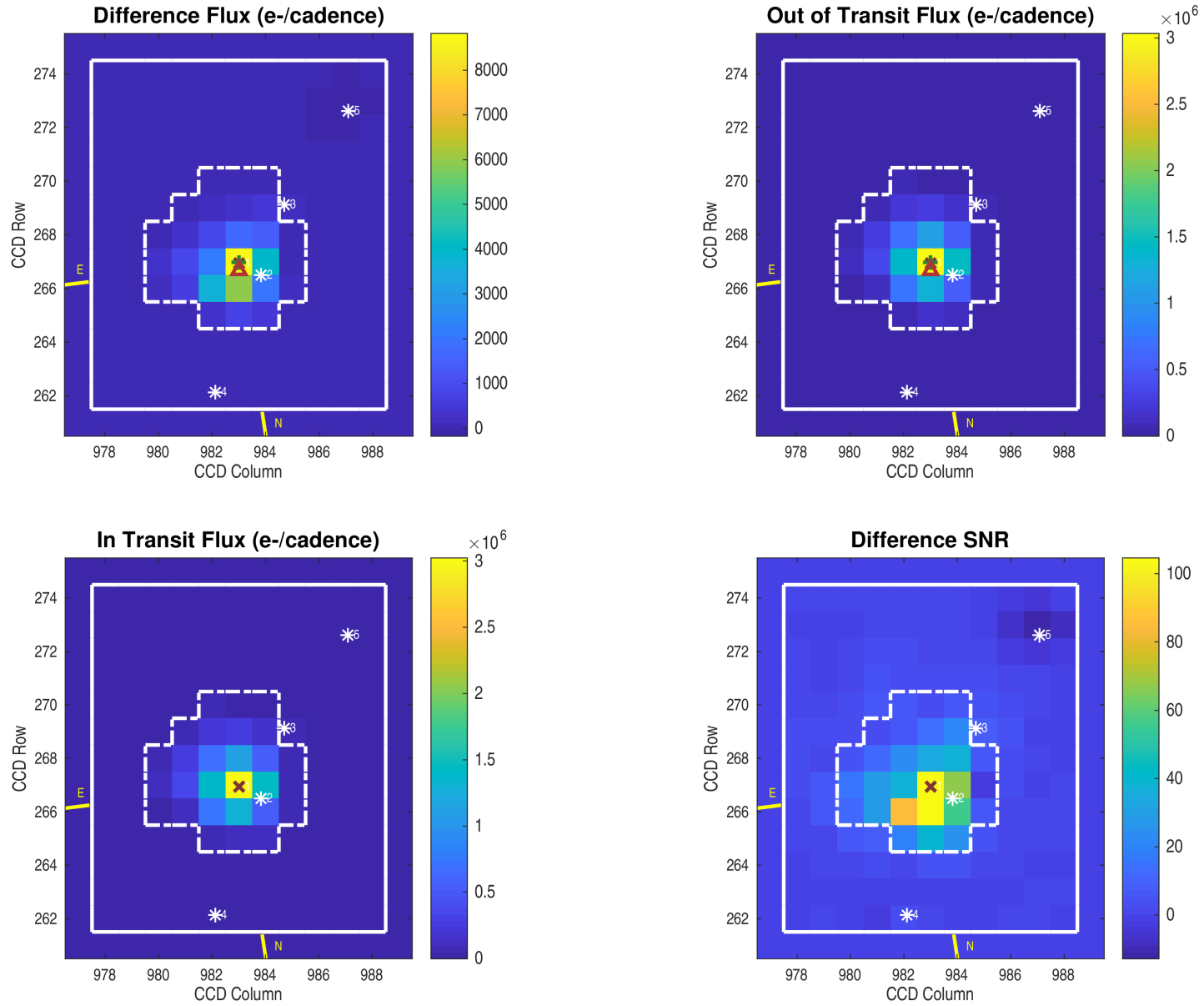
DV Diagnostic Results:

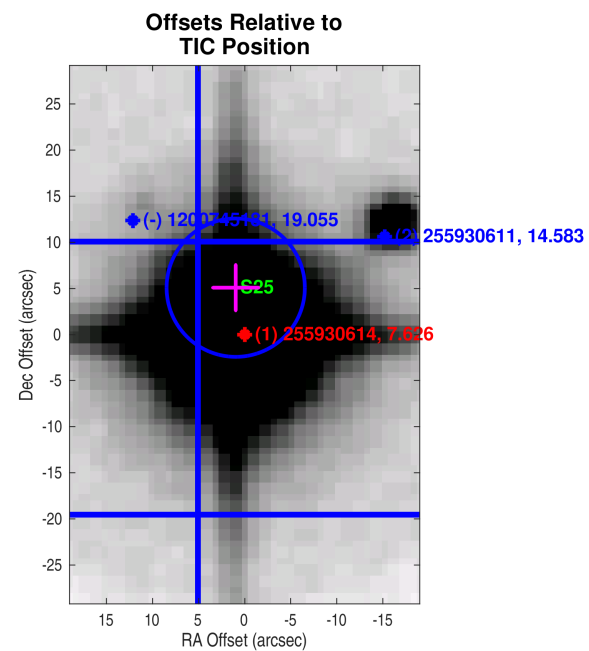
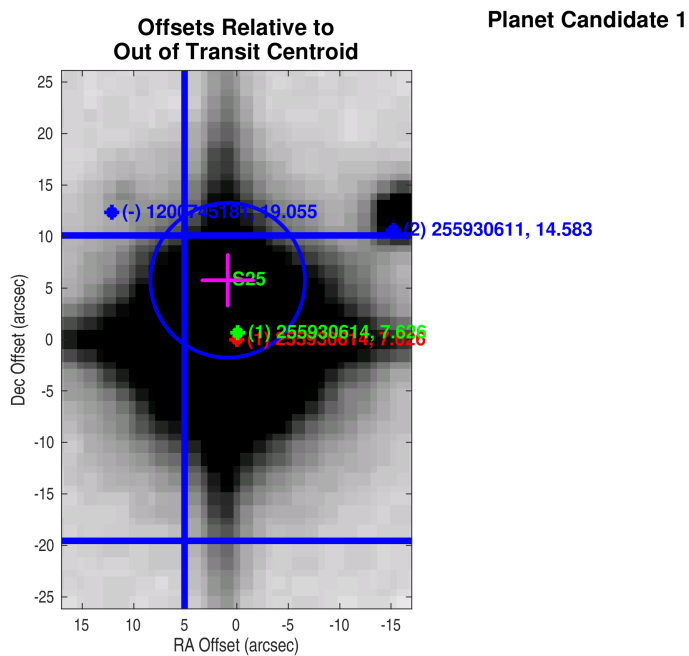
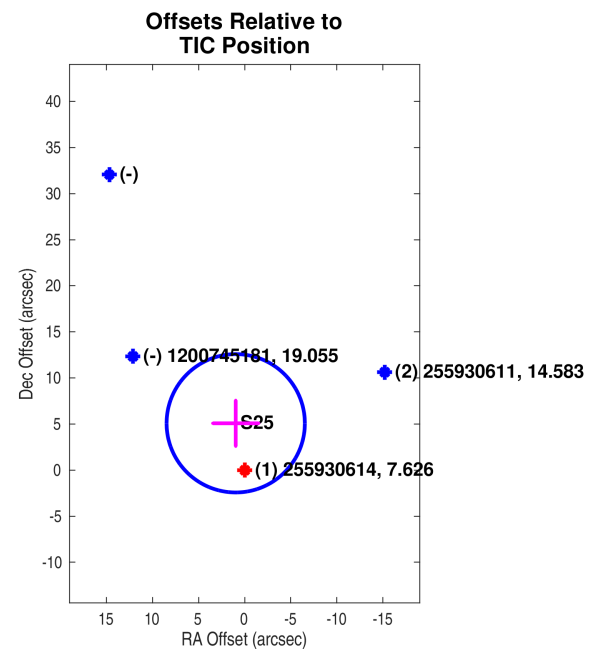
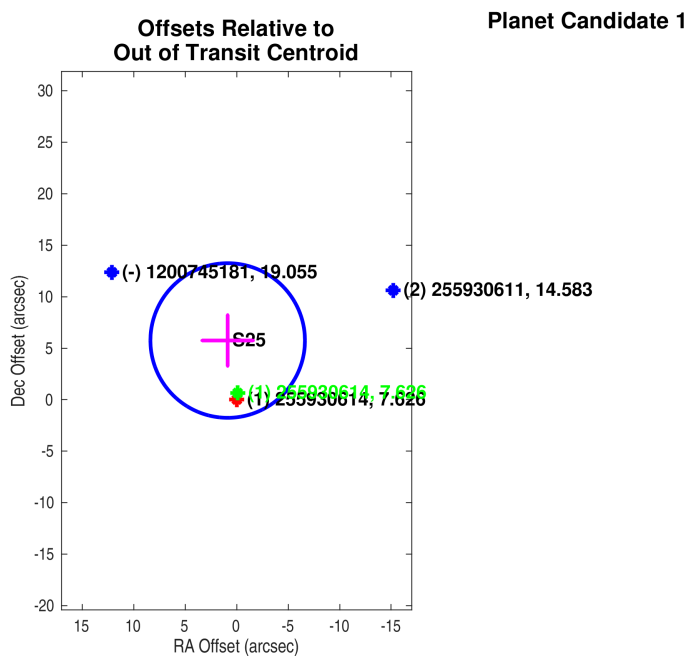
ShortPeriod-sig: N/A  
LongPeriod-sig: N/A  
ModelChiSquare2-sig: 0.0%  
ModelChiSquareGof-sig: 100.0%  
Bootstrap-pfa: 0.00e+00  
GhostDiagnostic-chr: 7.475  
OotOffset-rm: 5.813 arcsec [2.32 sigma]  
TicOffset-rm: 5.172 arcsec [2.07 sigma]  
OotOffset-tot: 1  
TicOffset-tot: 1  
DiffImageQuality-fgm: 1.00 [1/1]  
DiffImageOverlap-fno: 1.00 [1/1]

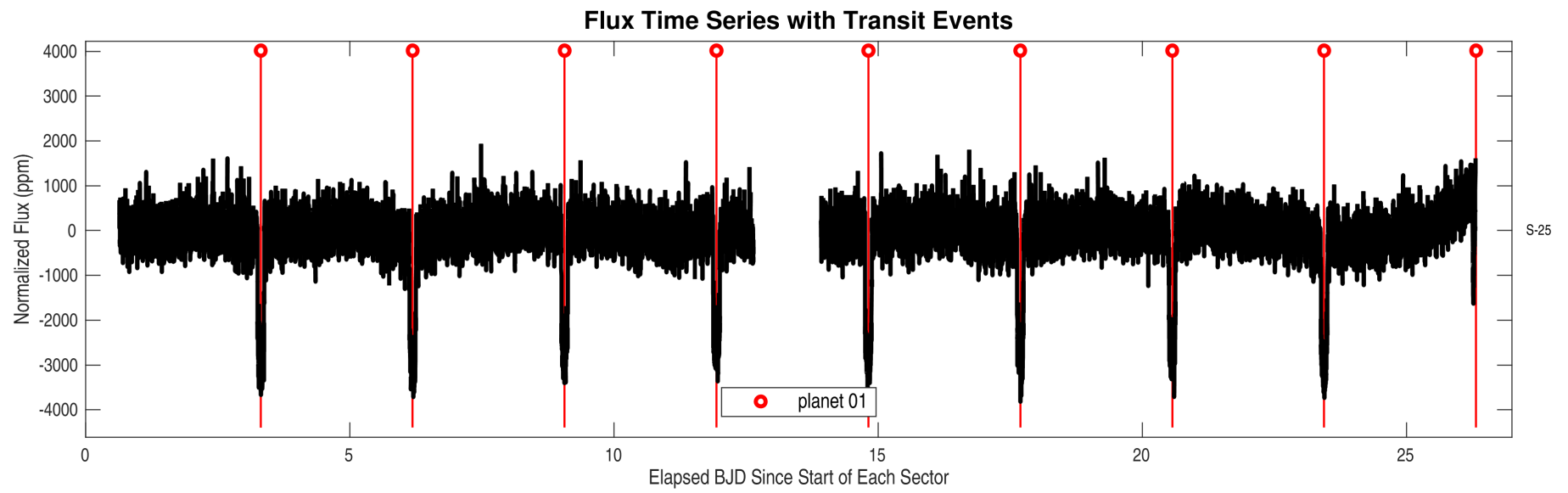
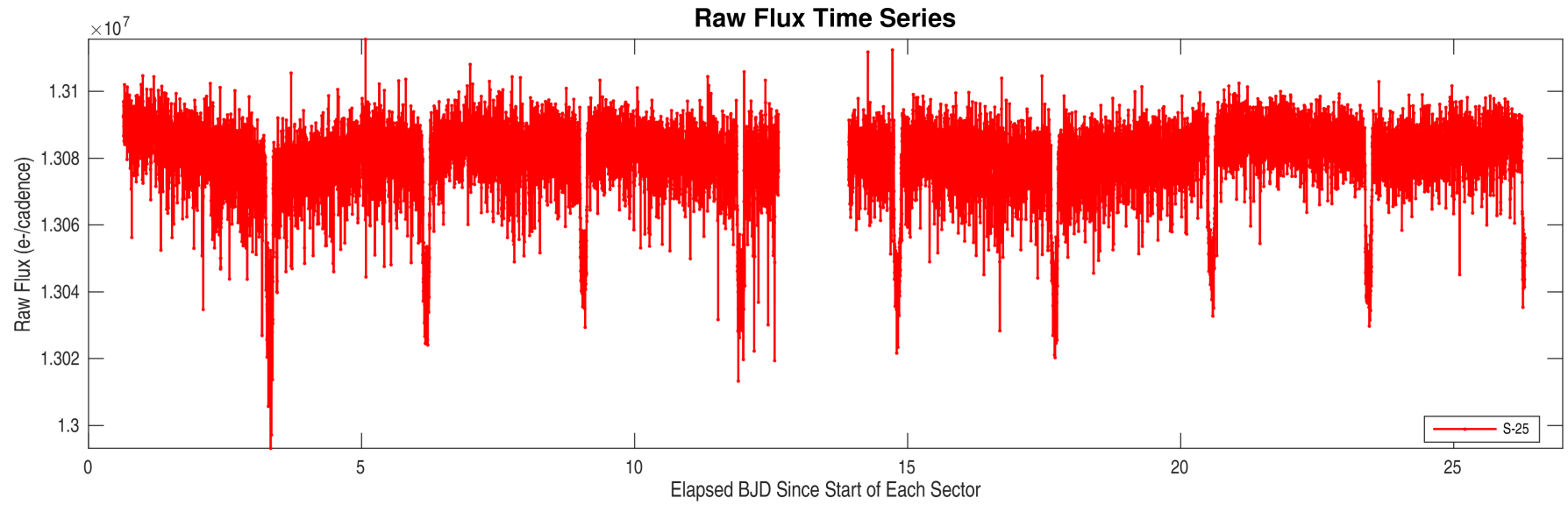
Software Revision: spoc-4.0.36-20200520 -- Date Generated: 09-Jul-2020 06:24:21 Z

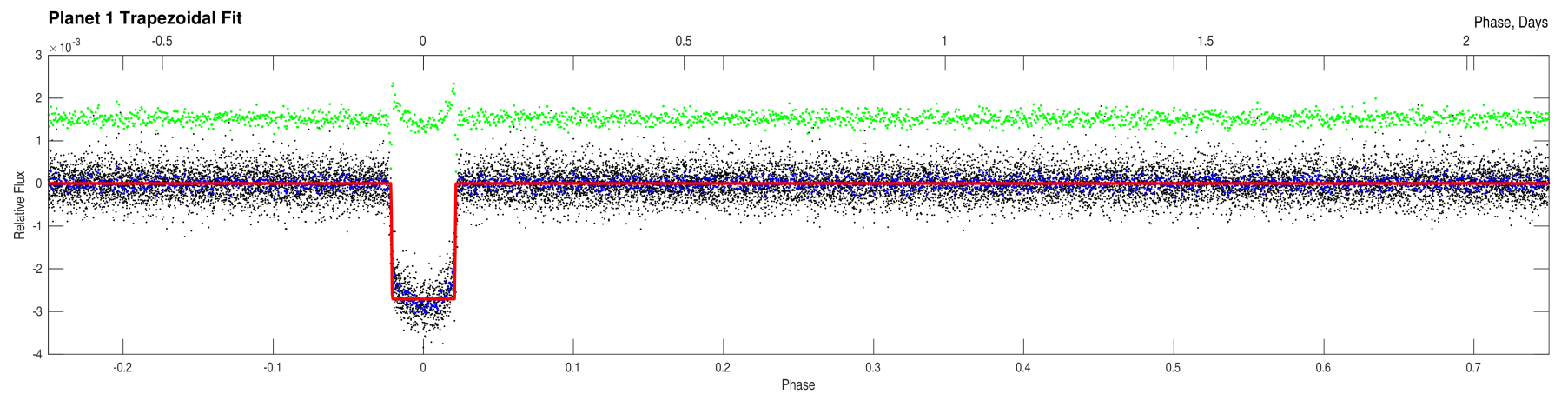
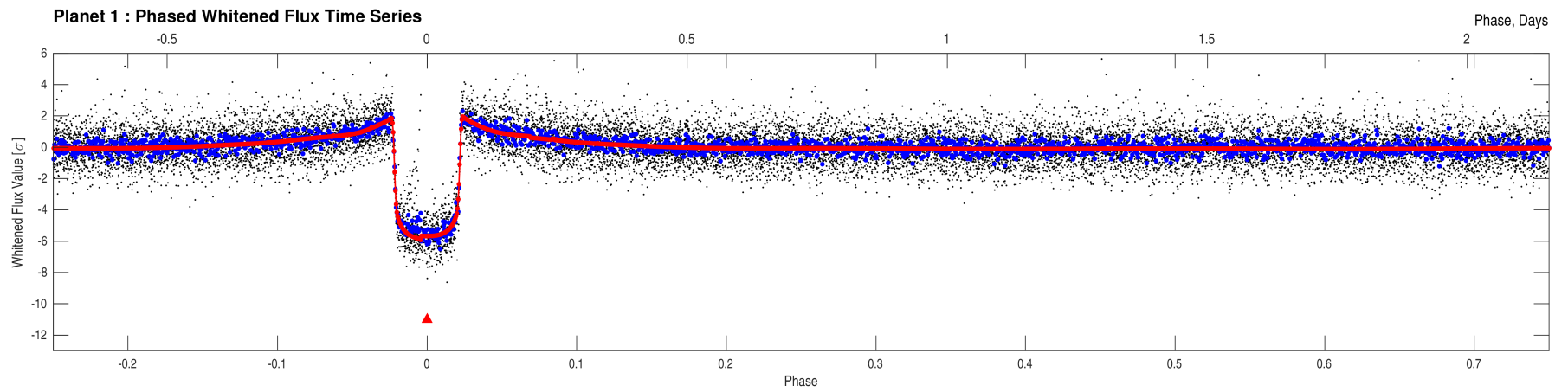
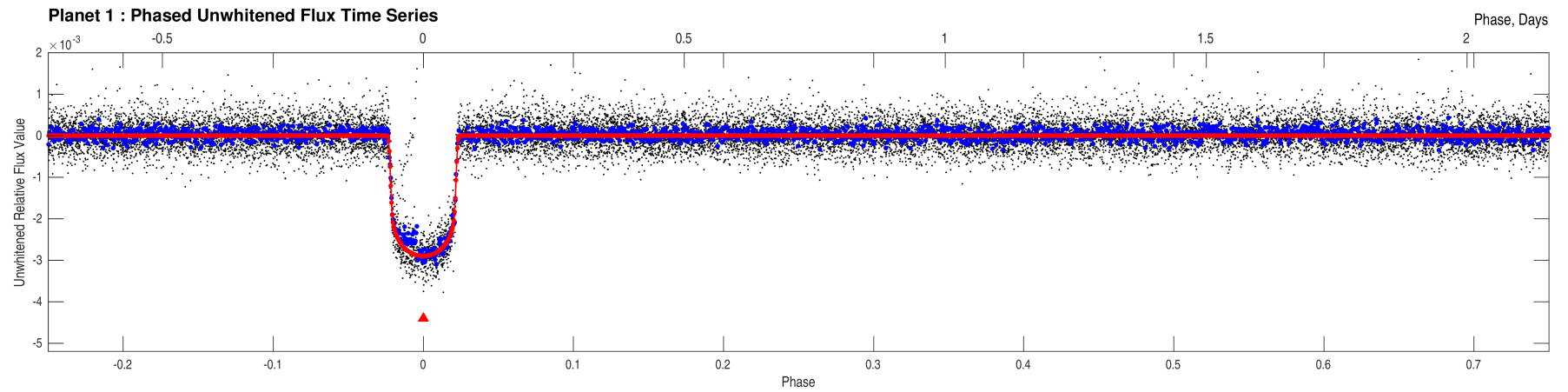
This Data Validation Report Summary was produced in the TESS Science Processing Operations Center Pipeline at NASA Ames Research Center

Planet Candidate 1 / Sector 25 / Target Pixel Table 245

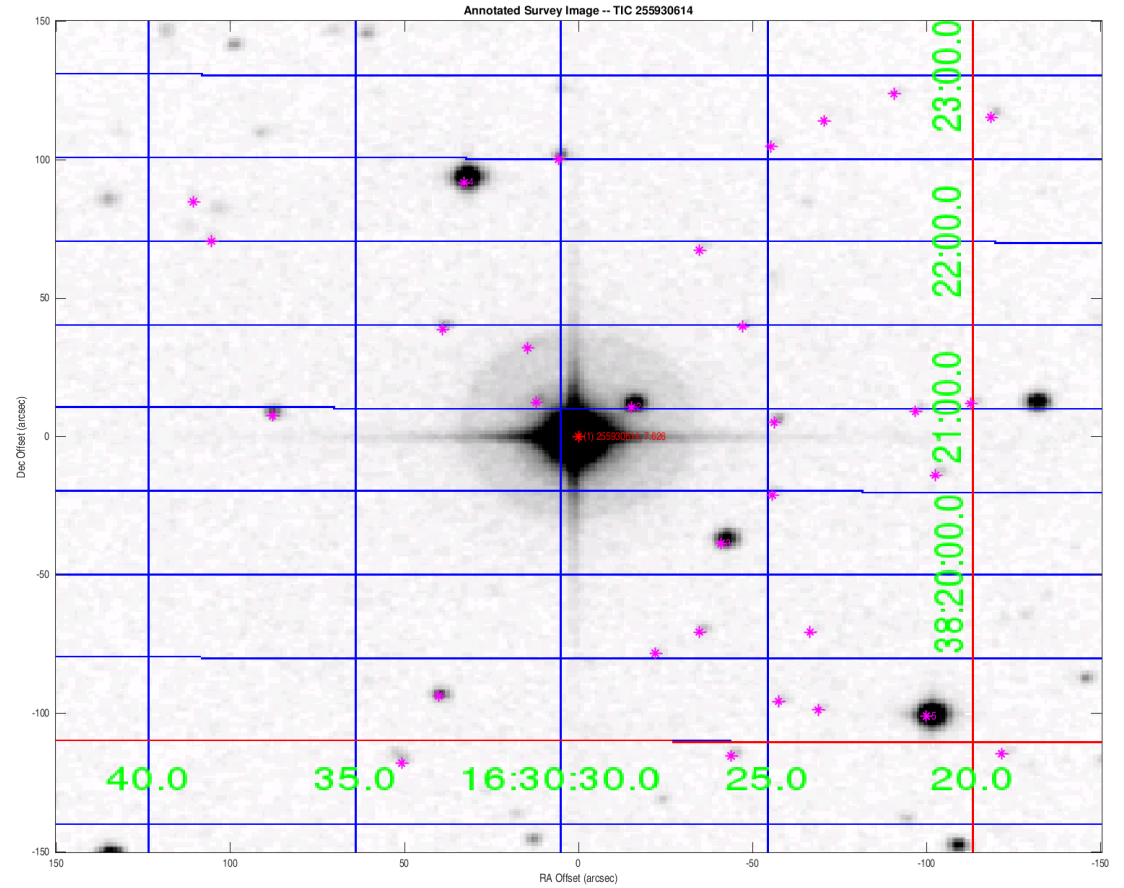








Index	TIC ID	TESS Mag	Distance (arcsec)
1	0000000255930614	7.63	0.00
2	0000000255930611	14.58	18.54
3	0000000255930617	14.56	56.23
4	0000000255930603	12.46	97.42
5	0000000255930620	11.99	142.00



Distances are corrected for proper motion. This table may not contain all of the objects shown.