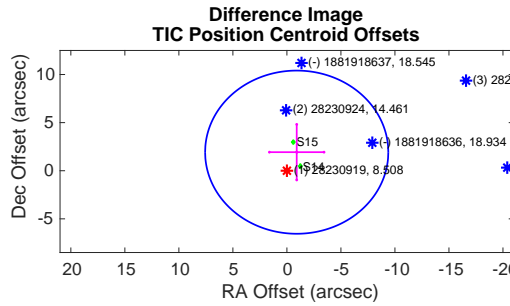
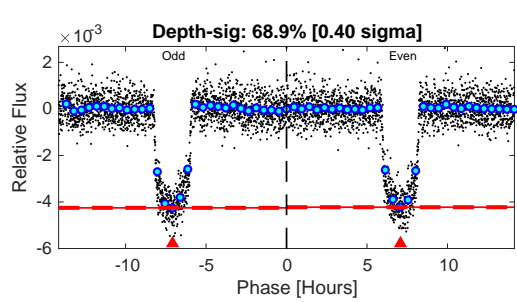
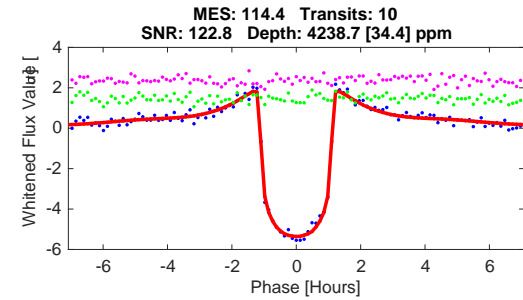
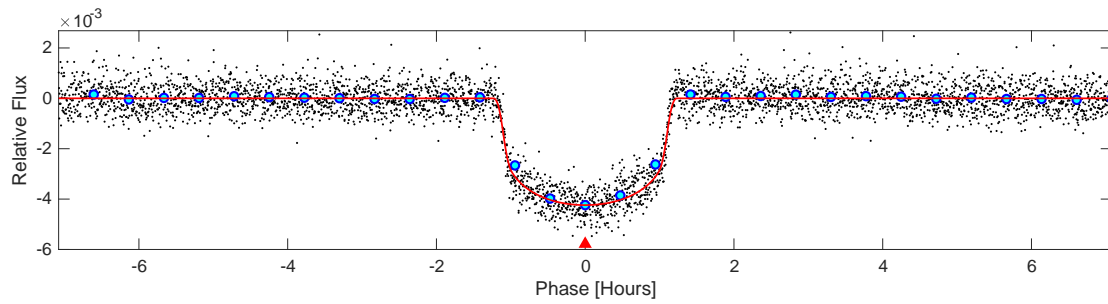
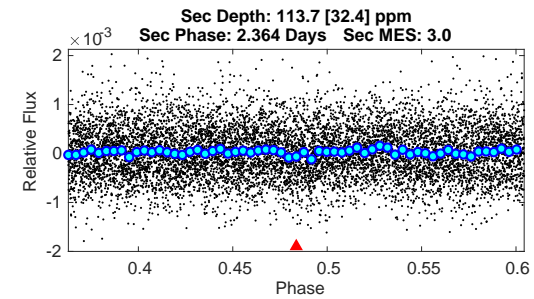
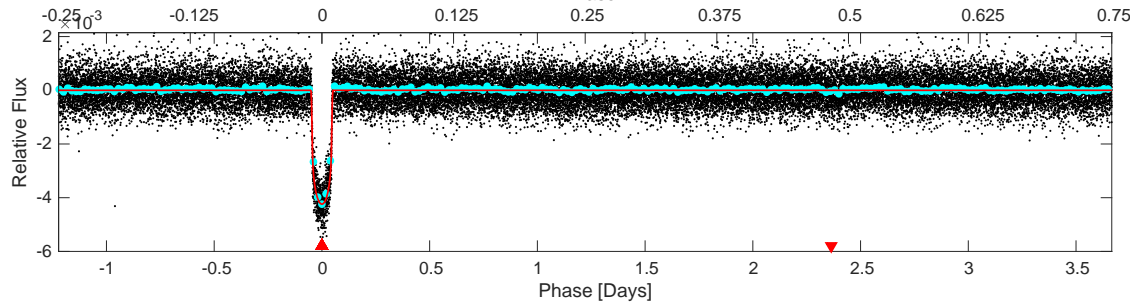
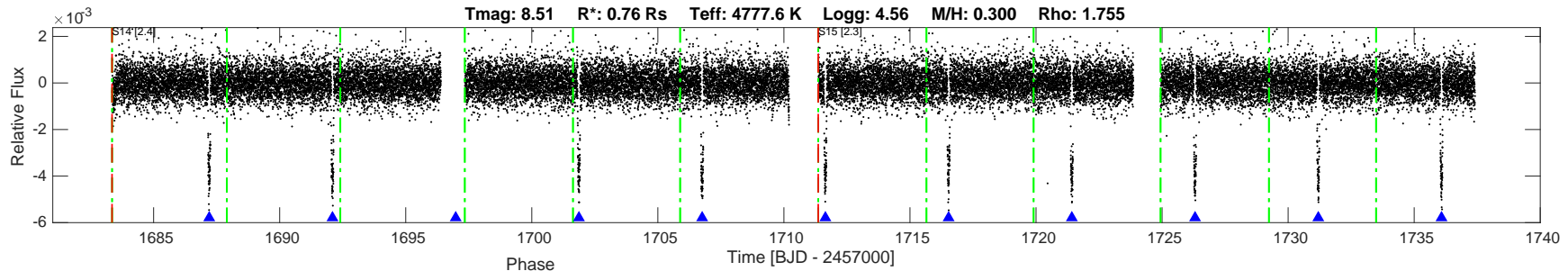


TIC: 28230919 Candidate: 1 of 1 Period: 4.888 d  
TOI: 1144.01 Corr: 0.951

Tmag: 8.51 R\*: 0.76 Rs Teff: 4777.6 K Logg: 4.56 M/H: 0.300 Rho: 1.755



DV Fit Results:

Period = 4.88782 [0.00004] d  
Epoch = 1687.2061 [0.0003] BTJD  
Rp/R\* = 0.0588 [0.0020]  
a/R\* = 16.70 [2.18]  
b = 0.09 [1.48]  
Teff = 100.86 [16.99]  
Teq = 808 [34] K  
Rp = 4.87 [0.35] Re  
a = 0.0517 [0.0041] AU  
Rho = 2.621 [1.028]  
Ag = 7.03 [2.28] [2.64 sigma]  
Tp = 2035 [157] K [7.65 sigma]

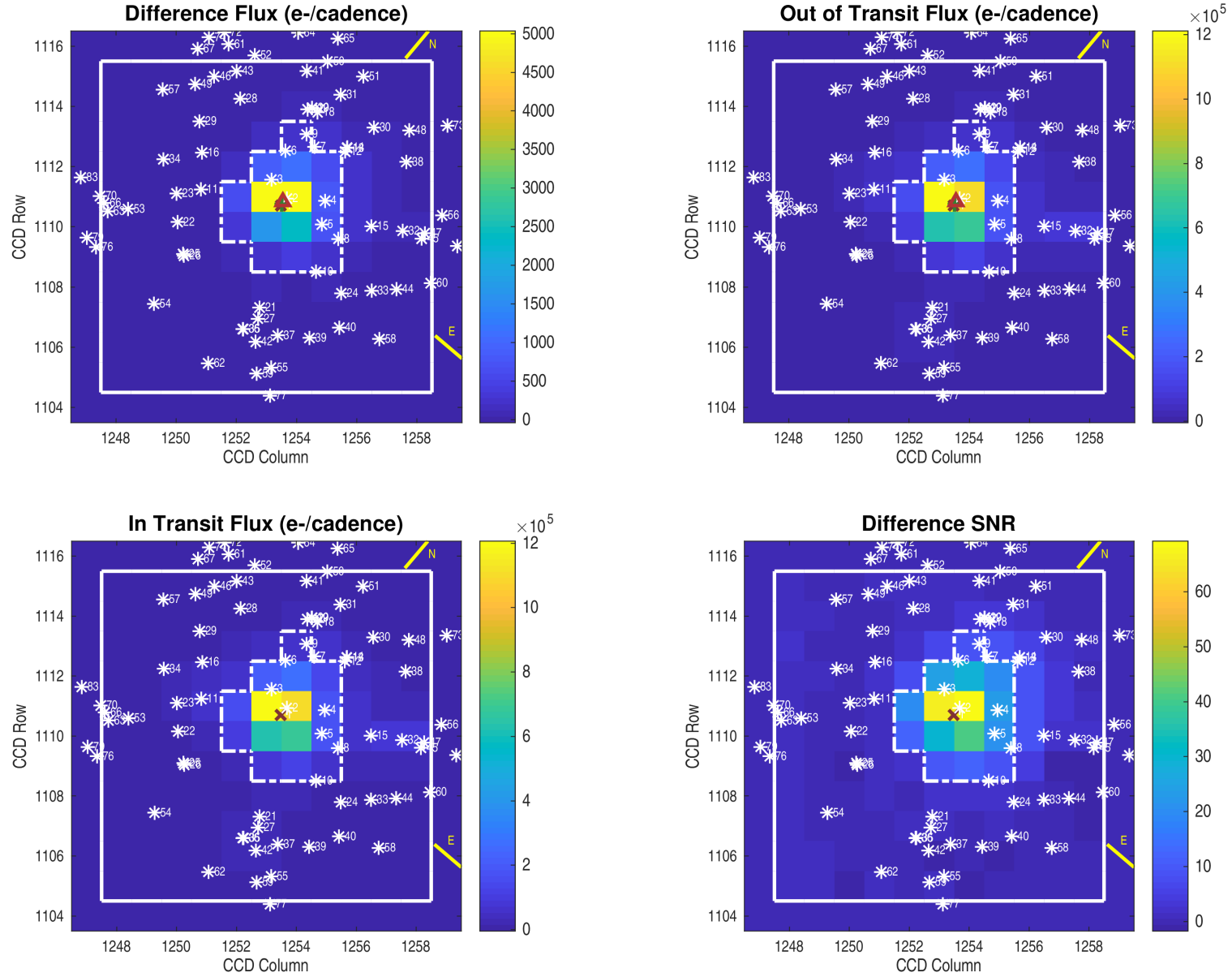
DV Diagnostic Results:

ShortPeriod-sig: N/A  
LongPeriod-sig: N/A  
ModelChiSquare2-sig: 25.4%  
ModelChiSquareGof-sig: 100.0%  
Bootstrap-pfa: 0.00e+00  
GhostDiagnostic-chr: 2.42  
OotOffset-rm: 1.415 arcsec [0.52 sigma]  
TicOffset-rm: 2.132 arcsec [0.75 sigma]  
OotOffset-tot: 2  
TicOffset-tot: 2  
DiffImageQuality-fgm: 1.00 [2/2]  
DiffImageOverlap-fno: 1.00 [2/2]

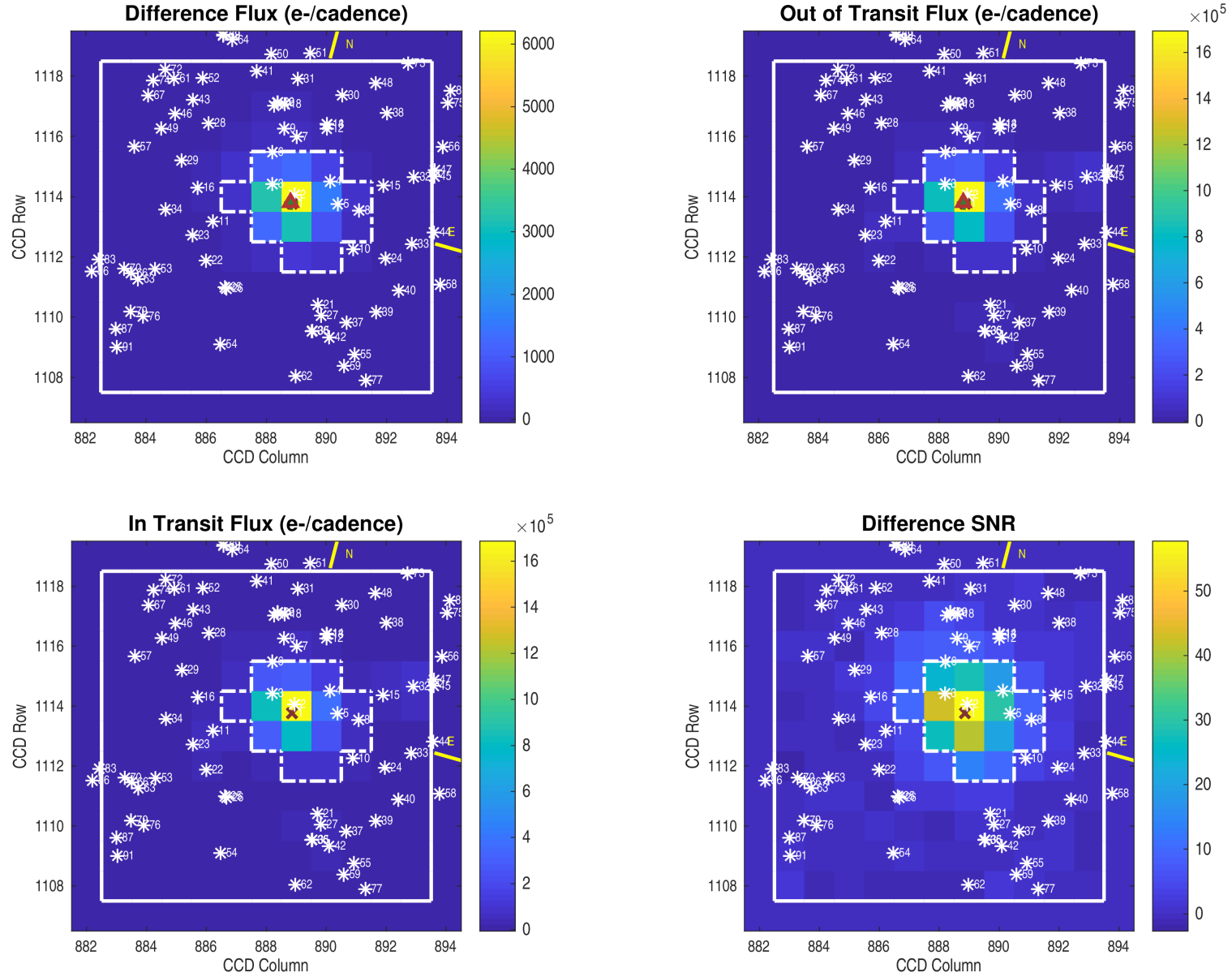
Software Revision: spoc-4.0.11-20191024 -- Date Generated: 25-Oct-2019 21:56:45 Z

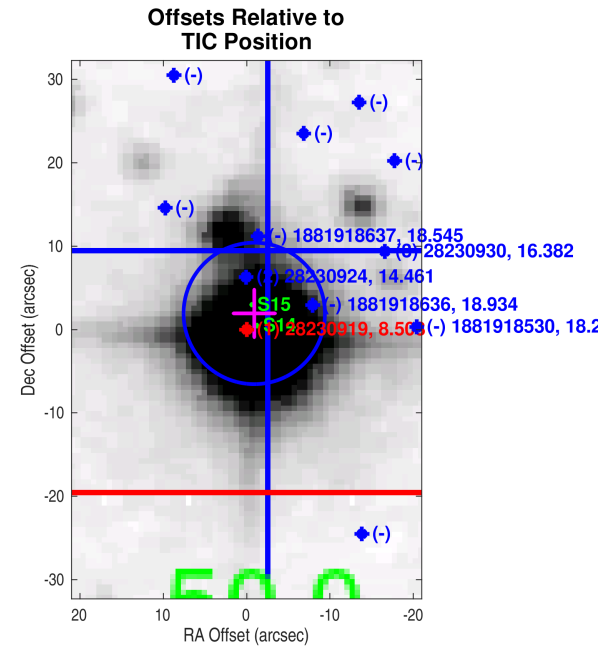
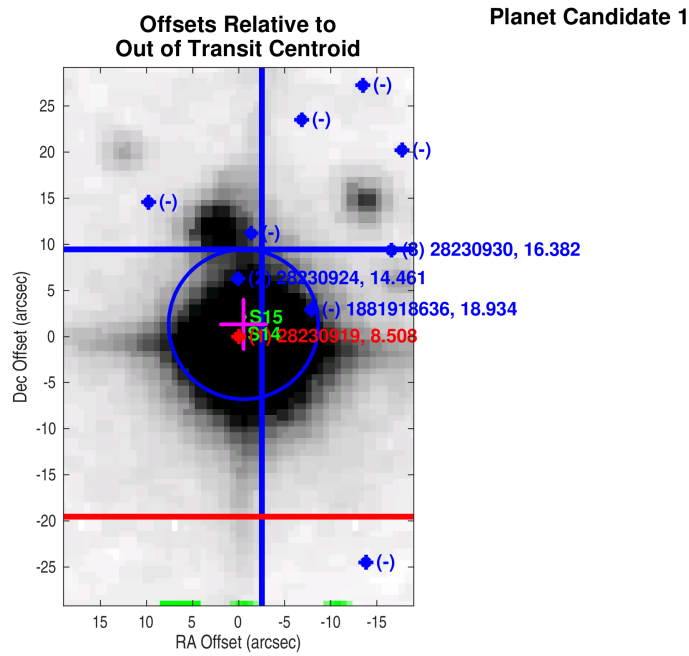
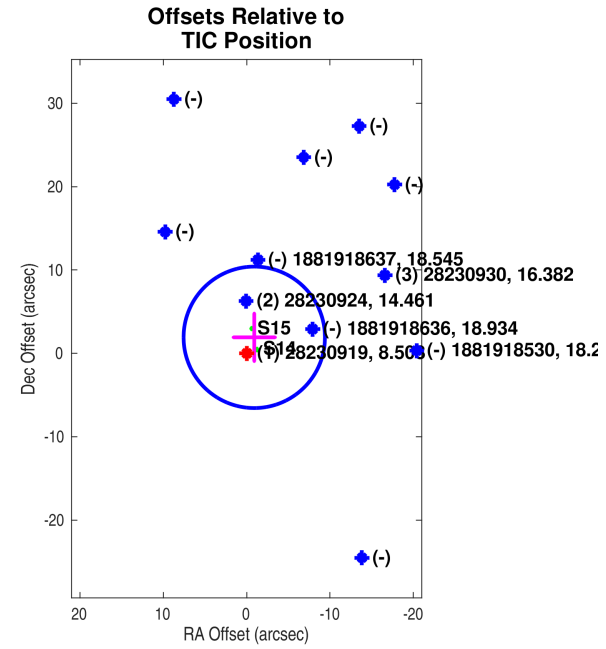
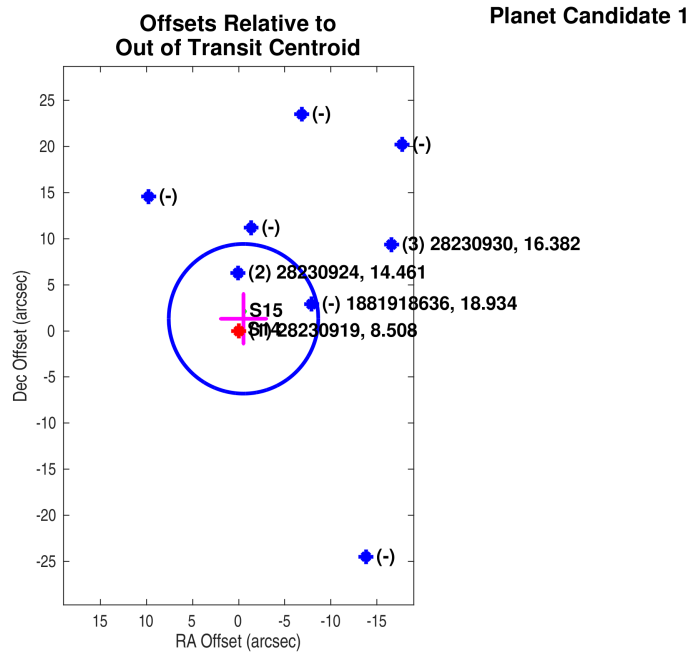
This Data Validation Report Summary was produced in the TESS Science Processing Operations Center Pipeline at NASA Ames Research Center

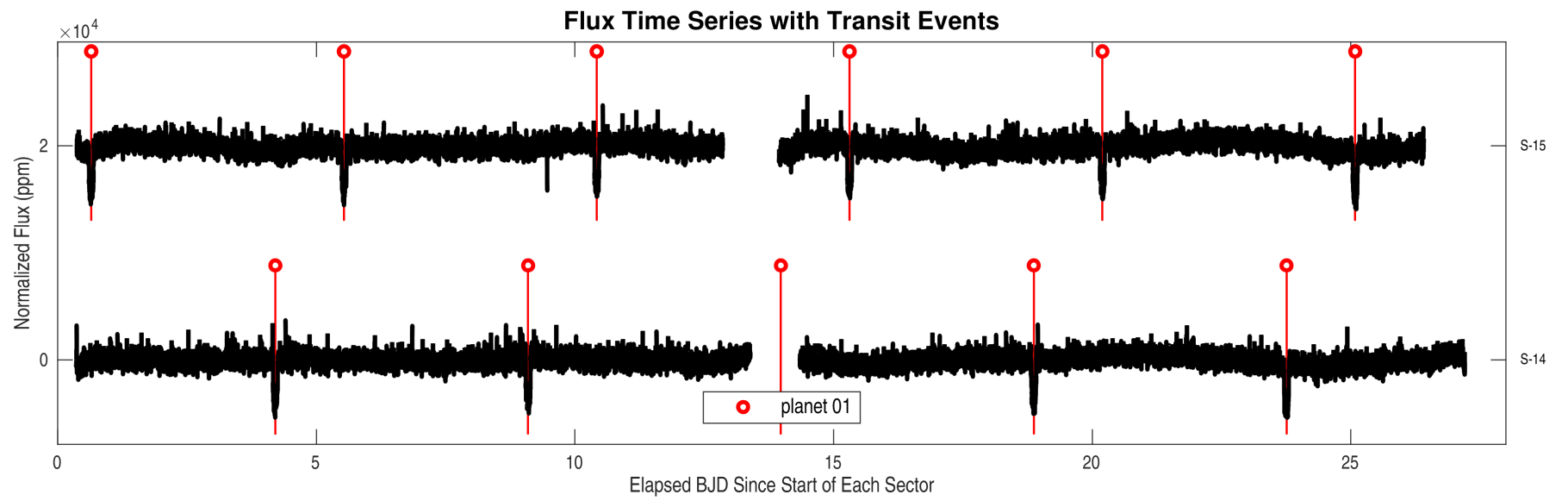
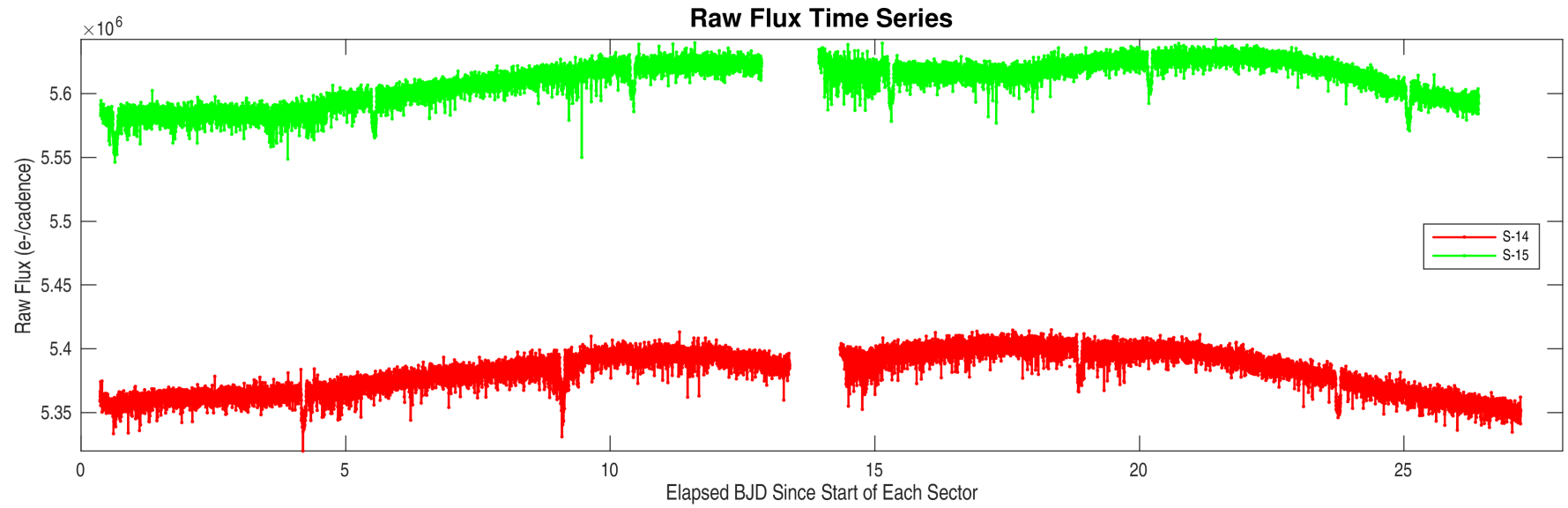
Planet Candidate 1 / Sector 15 / Target Pixel Table 169

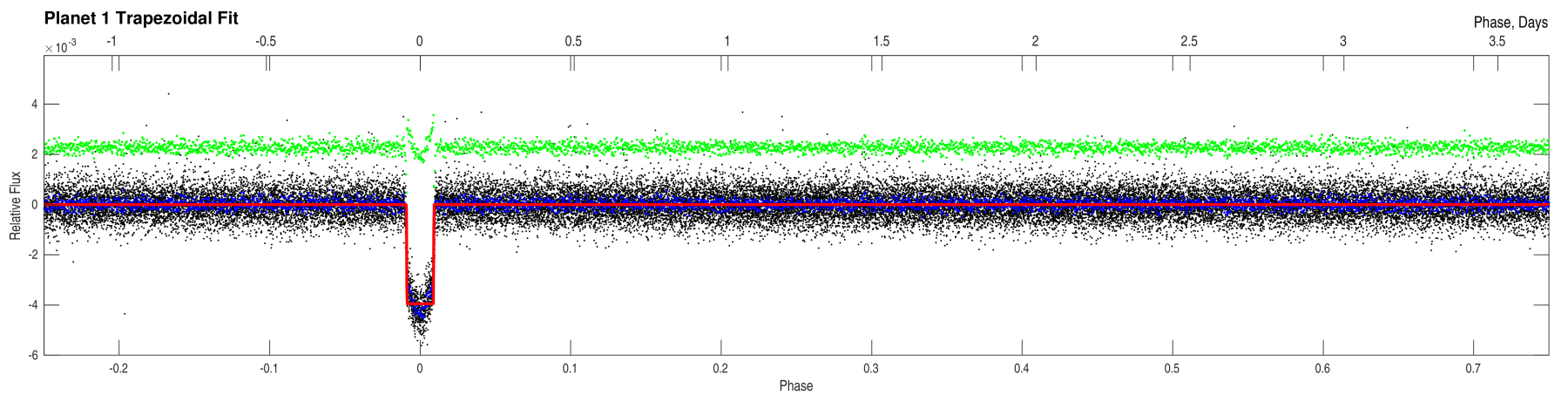
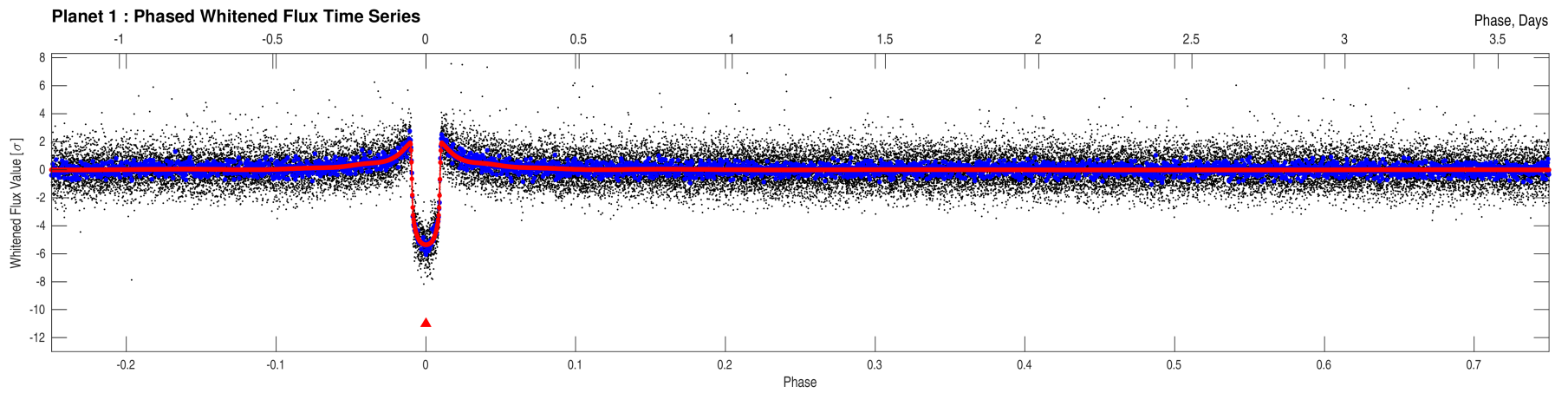
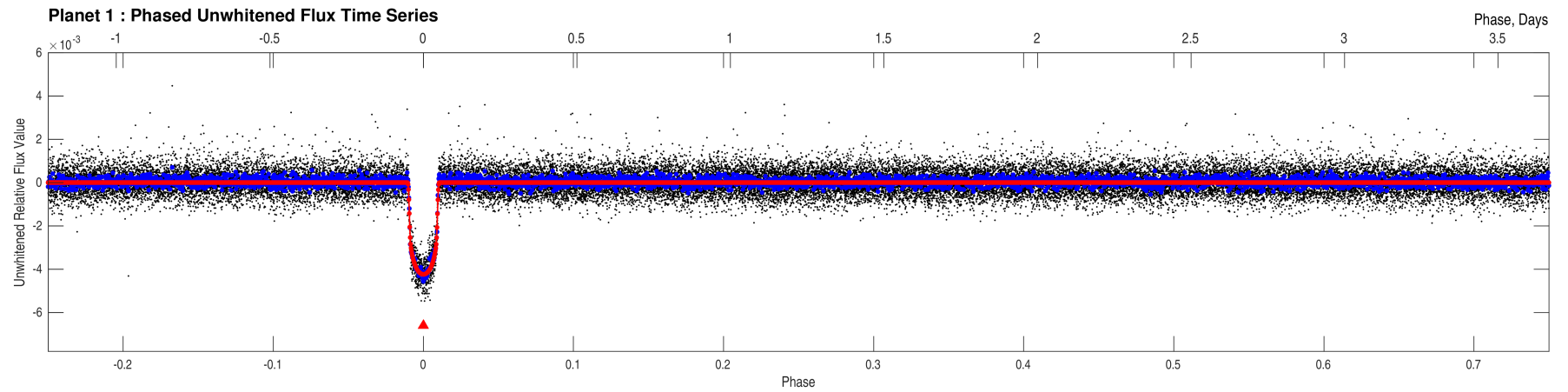


Planet Candidate 1 / Sector 14 / Target Pixel Table 167



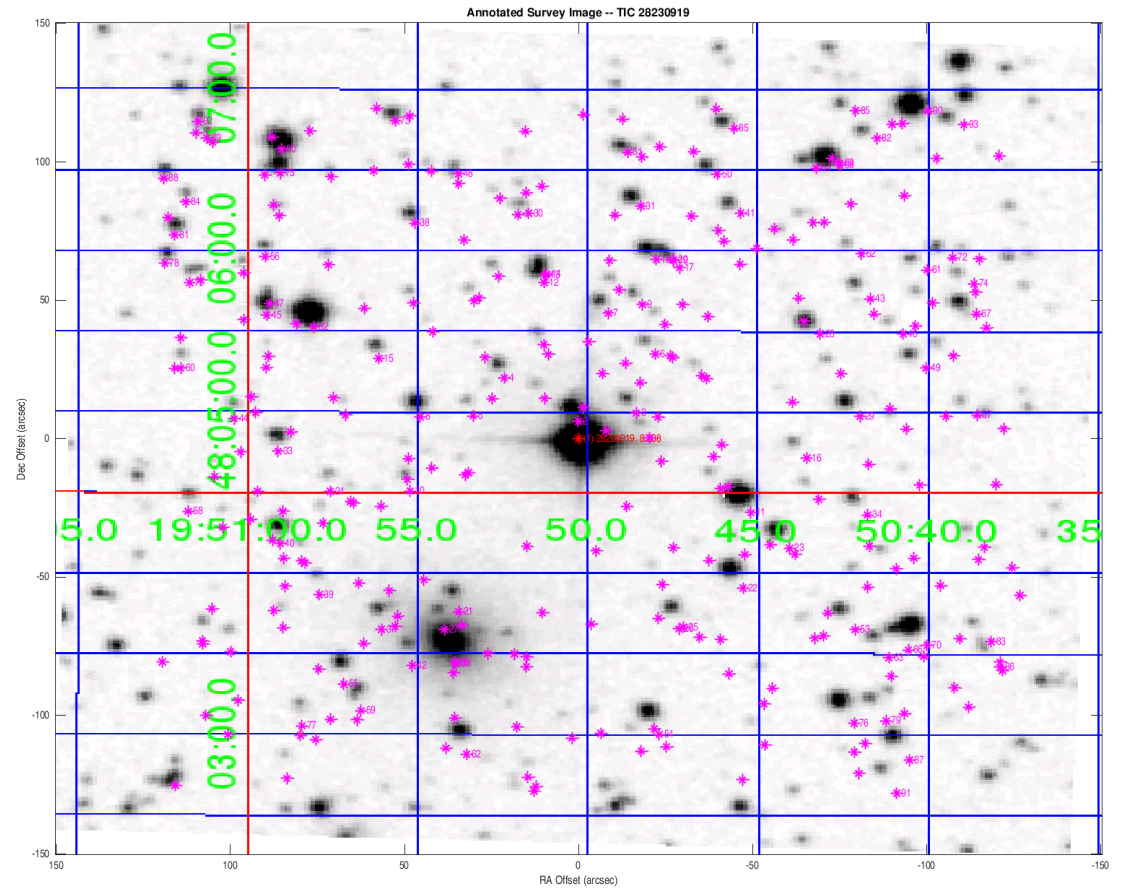






Stellar Distance Table

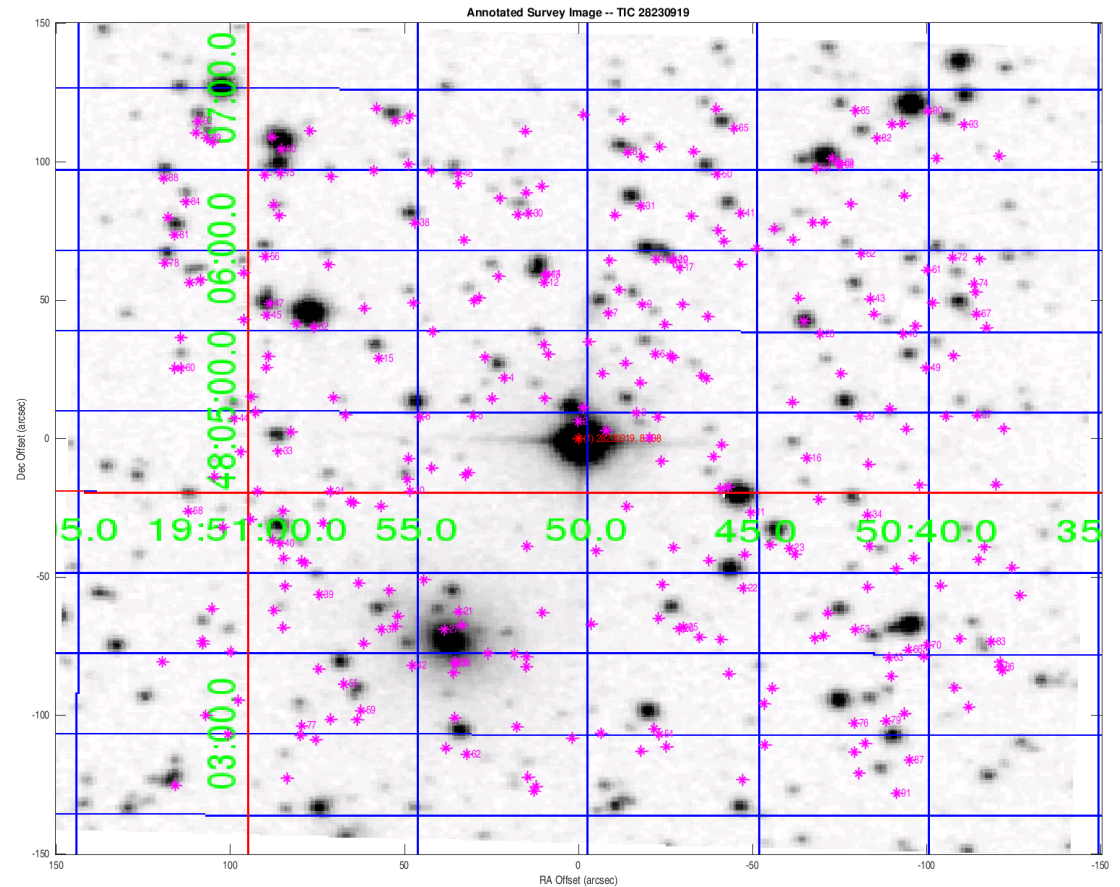
Index	TIC ID	TESS Mag	Distance (arcsec)
1	0000000028230919	8.51	0.00
2	0000000028230924	14.46	6.28
3	0000000028230930	16.38	19.04
4	0000000028230935	16.03	30.60
5	0000000028230929	17.32	31.35
6	0000000028230942	16.95	37.73
7	0000000028230950	15.89	46.14
8	0000000028230926	14.52	46.14
9	0000000028230951	16.91	51.80
10	0000001881918608	17.39	51.96
11	0000000028230906	12.16	56.24
12	0000001881918644	15.46	57.24
13	0000000028230962	14.25	59.81
14	0000001881918645	15.28	60.12
15	0000000028230941	16.15	64.29
16	0000000028230917	17.25	65.93
17	0000001881918638	16.89	68.25
18	0000000028230969	14.97	68.44
19	0000000028230968	16.55	69.98
20	0000001881918623	16.78	70.06
21	0000000028230891	16.29	71.35
22	0000000028230896	14.13	71.71
23	0000000028230901	14.62	72.39
24	0000000028230912	17.01	73.84
25	0000000028230889	15.96	74.45
26	0000001881918528	17.32	74.53
27	0000000028230885	17.31	79.04
28	0000000028230946	14.74	79.05
29	0000000028230927	15.03	81.26
30	0000001881918639	17.47	82.69
31	0000000028230982	15.20	85.91
32	0000000028230947	11.65	86.04
33	0000000028230920	15.12	86.42
34	0000000028230905	15.78	87.42
35	0000000028230875	13.37	88.23
36	0000010000766665	12.61	88.41
37	0000000028230887	16.25	89.20
38	0000000028230977	15.76	90.98
39	0000000028230893	17.51	93.44
40	0000000028230903	14.85	93.72



Distances are corrected for proper motion. This table may not contain all of the objects shown.

## Stellar Distance Table – Continued

Index	TIC ID	TESS Mag	Distance (arcsec)
41	0000000028230980	16.13	93.83
42	0000000028230873	17.14	94.85
43	0000000028230954	15.59	97.81
44	0000000028230925	17.25	99.18
45	0000000028230948	14.76	100.06
46	0000000028230944	17.25	100.63
47	0000000028230952	17.32	101.31
48	0000000028230986	17.17	101.71
49	0000000028230939	16.12	103.05
50	0000000028230988	15.82	103.49
51	0000000028230992	15.68	104.45
52	0000000028230972	17.10	105.13
53	0000000028230886	15.84	105.26
54	0000000028230861	14.60	109.35
55	0000000028230870	15.28	111.38
56	0000000028230971	16.54	111.47
57	0000000028230928	17.42	114.86
58	0000000028230907	16.41	115.09
59	0000000028230867	16.43	116.40
60	0000000028230938	17.35	117.07
61	0000000028230963	17.06	117.21
62	0000000028230858	14.56	118.46
63	0000000028230876	16.55	119.12
64	0000000028230990	16.58	119.20
65	0000000028230998	15.53	120.64
66	0000000028230879	16.23	121.67
67	0000000028230949	15.18	122.89
68	0000000028230991	13.33	124.09
69	0000001881921589	15.52	124.72
70	0000000028230880	13.45	124.80
71	0000000028230959	17.18	125.14
72	0000000028230970	16.73	125.79
73	0000000028231001	15.58	126.30
74	0000000028230958	17.30	126.64
75	0000000028230989	14.29	128.64
76	0000000028230863	14.12	129.75
77	0000000028230862	17.50	130.66
78	0000000028230966	15.95	134.76
79	0000000028230864	16.55	134.91
80	0000000028230994	12.72	135.03

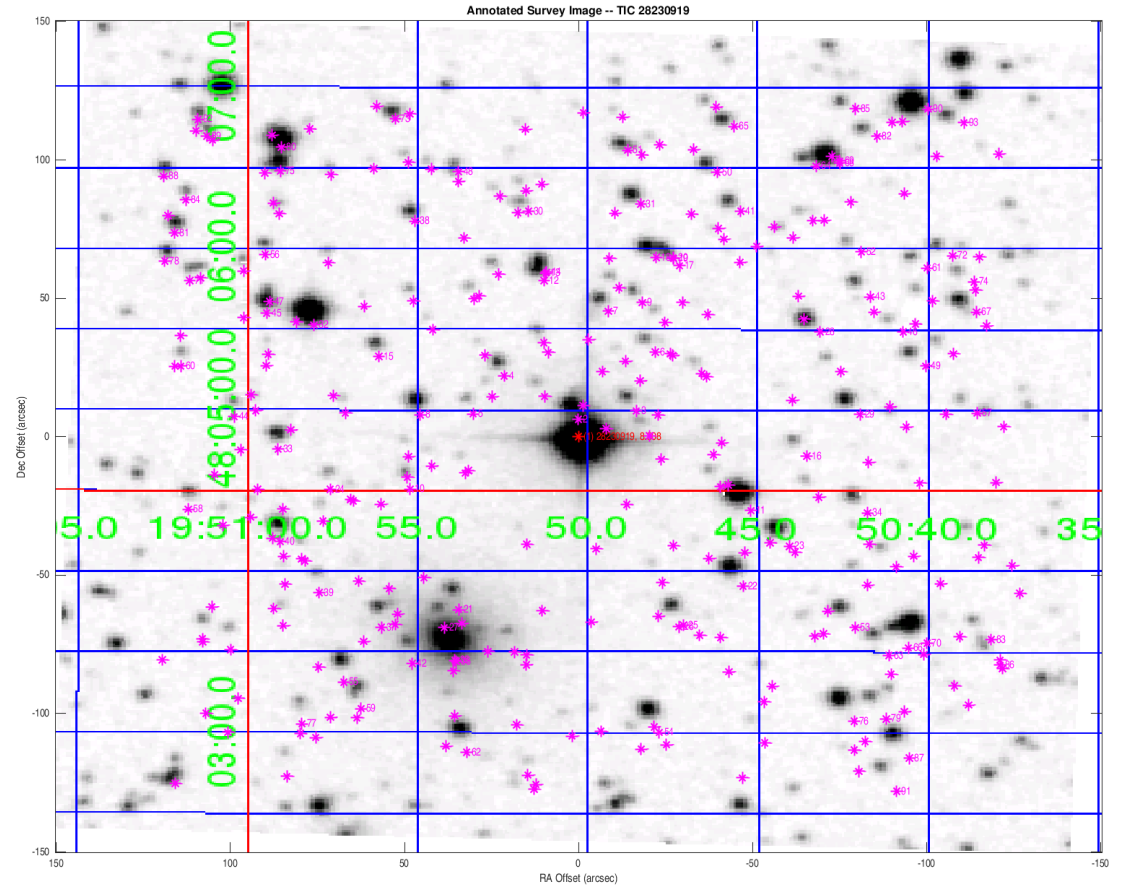


Distances are corrected for proper motion. This table may not contain all of the objects shown.



Stellar Distance Table – Continued

Index	TIC ID	TESS Mag	Distance (arcsec)
81	0000000028230974	15.63	137.43
82	0000000028230996	16.74	138.28
83	0000000028230882	17.26	139.40
84	0000000028230984	17.00	141.56
85	0000000028231004	16.70	142.69
86	0000000028230874	17.21	146.54
87	0000000028230857	14.74	150.08
88	0000000028230985	16.03	151.79
89	0000000028230995	17.31	152.30
90	0000000028231003	12.08	155.19
91	0000000028230853	16.77	157.33
92	0000000028231000	16.52	158.40
93	0000000028230999	16.32	158.50



Distances are corrected for proper motion. This table may not contain all of the objects shown.