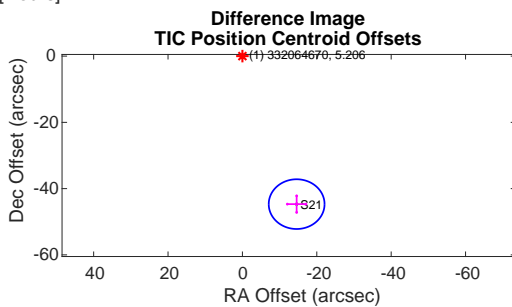
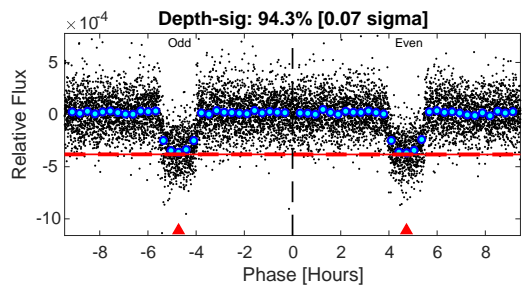
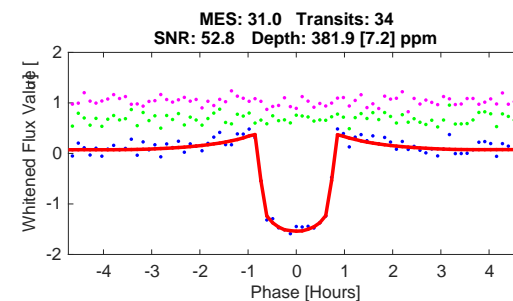
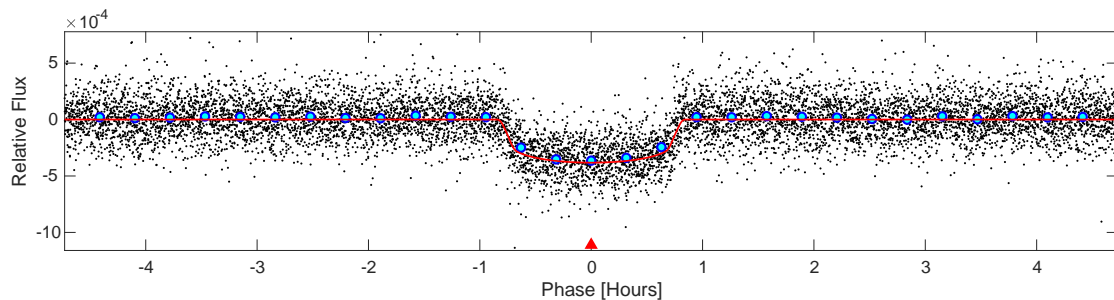
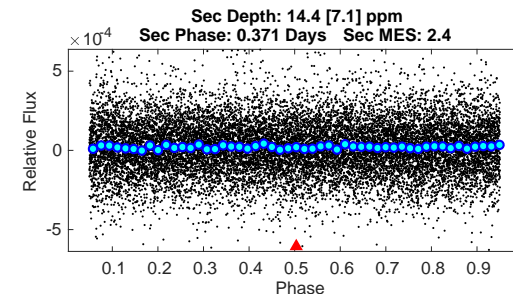
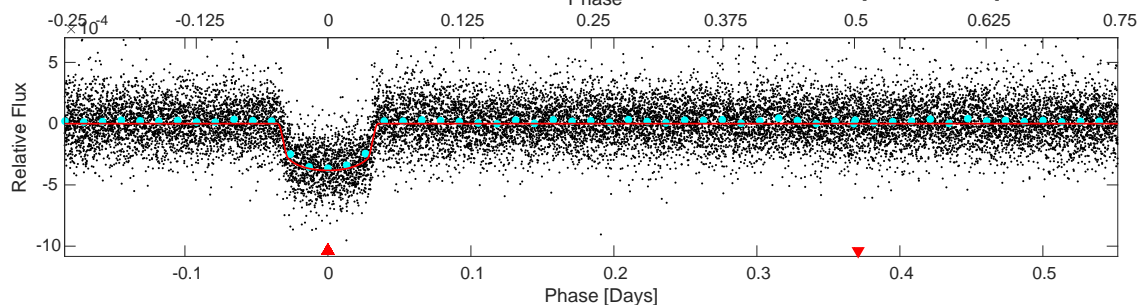
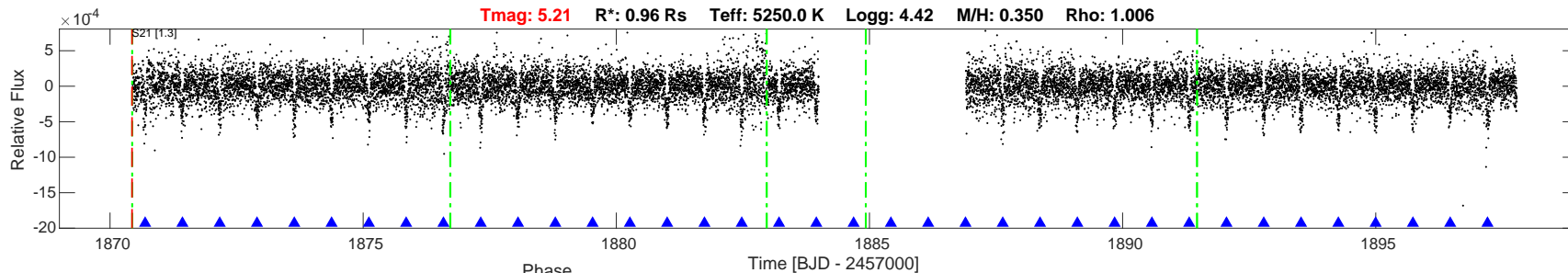


TIC: 332064670 Candidate: 1 of 1 Period: 0.736 d

**Tmag: 5.21** **R\*: 0.96 Rs** **Teff: 5250.0 K** **Logg: 4.42** **M/H: 0.350** **Rho: 1.006**



DV Fit Results:

Period = 0.73649 [0.00002] d  
 Epoch = 1870.6935 [0.0004] BTJD  
 Rp/R\* = 0.0192 [0.0021]  
 a/R\* = 2.77 [1.22]  
 b = 0.70 [0.37]  
 Seff = 2658.10 [499.65]  
 Teq = 1831 [86] K  
 Rp = 2.02 [0.26] Re  
 a = 0.0154 [0.0013] AU  
 Rho = 0.525 [0.694]  
 Ag = 0.46 [0.26] [-2.06 sigma]  
 Tp = 2338 [322] K [1.52 sigma]

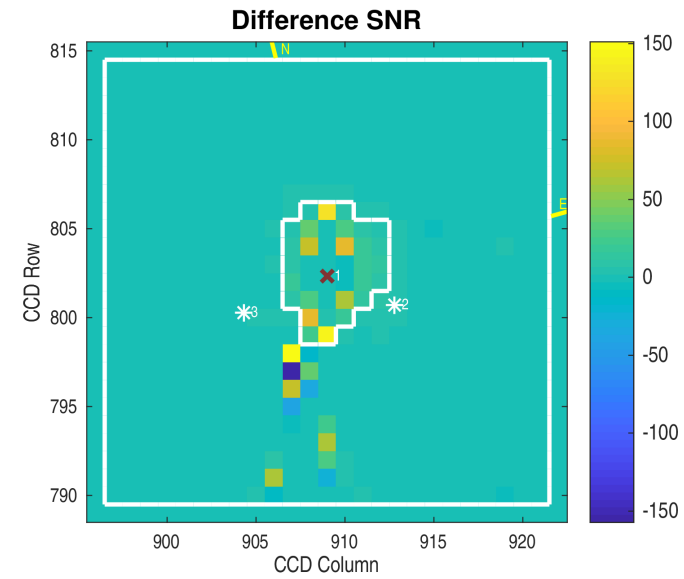
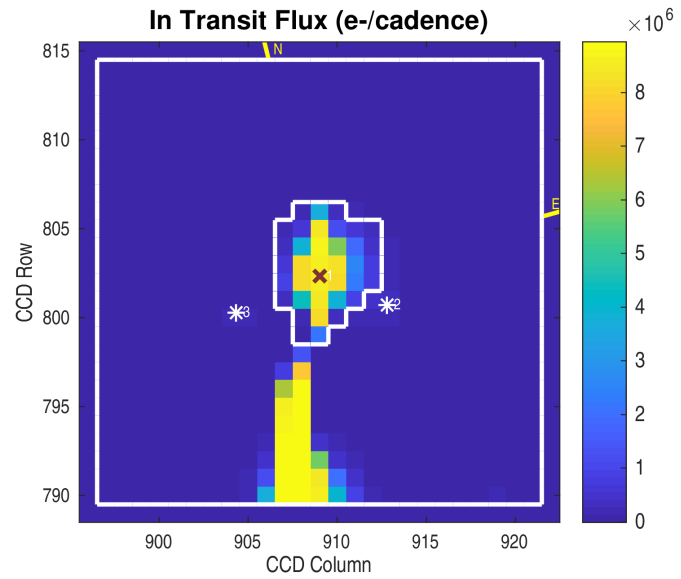
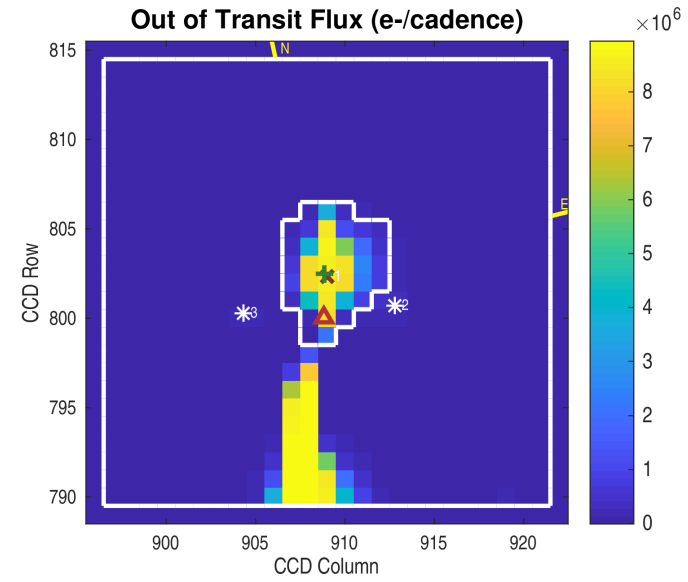
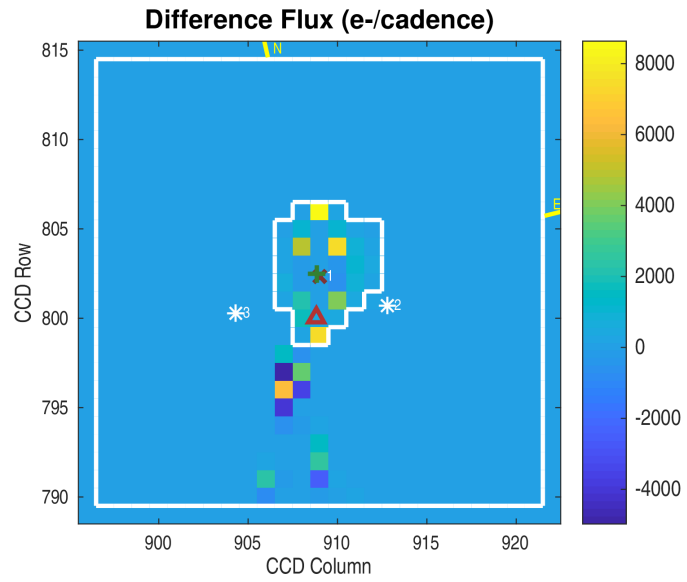
DV Diagnostic Results:

ShortPeriod-sig: N/A  
 LongPeriod-sig: N/A  
 ModelChiSquare2-sig: 62.5%  
 ModelChiSquareGof-sig: 100.0%  
 Bootstrap-pfa: 3.02e-166  
 GhostDiagnostic-chr: N/A  
 OotOffset-rm: 49.830 arcsec [19.92 sigma]  
 TicOffset-rm: 47.003 arcsec [18.79 sigma]  
 OotOffset-tot: 1  
 TicOffset-tot: 1  
 DiffImageQuality-fgm: 0.00 [0/1]  
 DiffImageOverlap-fno: 1.00 [1/1]

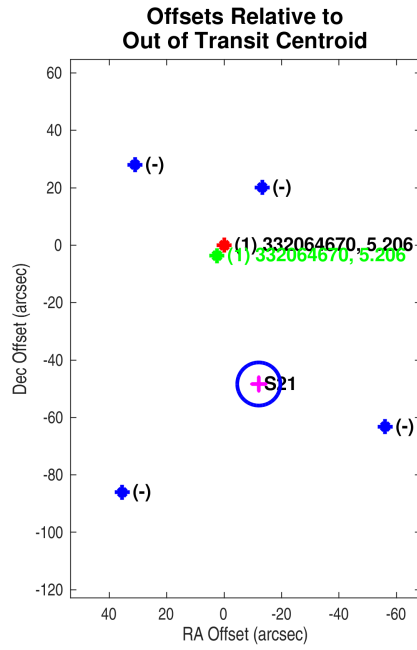
Software Revision: spoc-4.0.21-20200227 -- Date Generated: 29-Feb-2020 18:22:07 Z

This Data Validation Report Summary was produced in the TESS Science Processing Operations Center Pipeline at NASA Ames Research Center

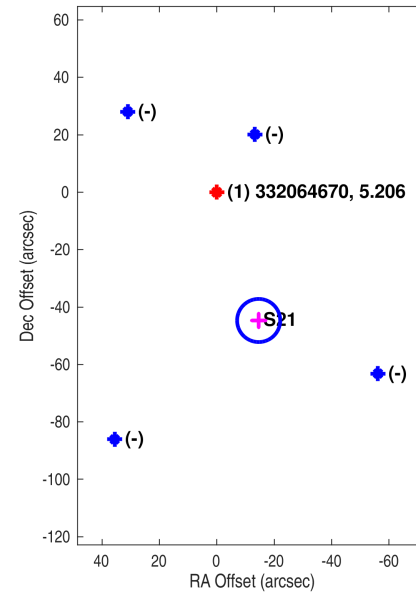
## Planet Candidate 1 / Sector 21 / Target Pixel Table 196



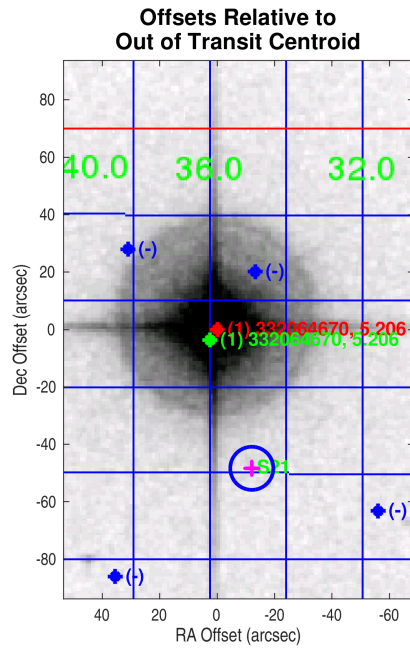
Planet Candidate 1



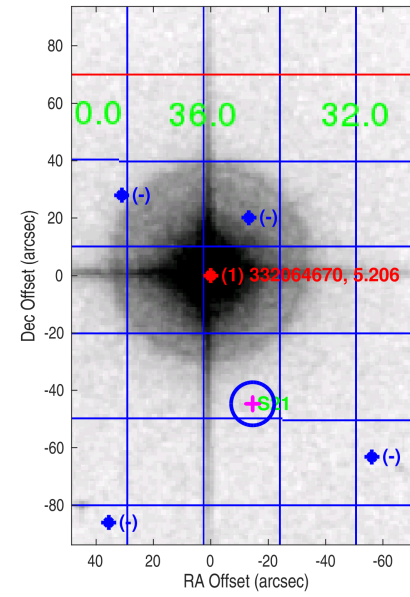
Offsets Relative to TIC Position

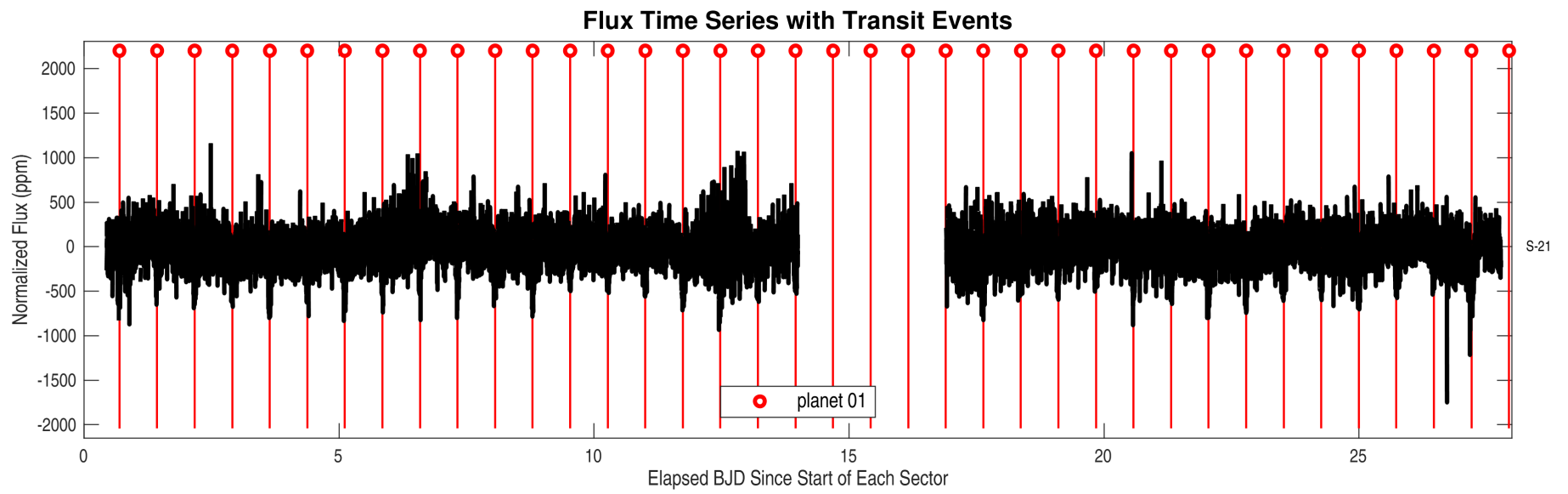
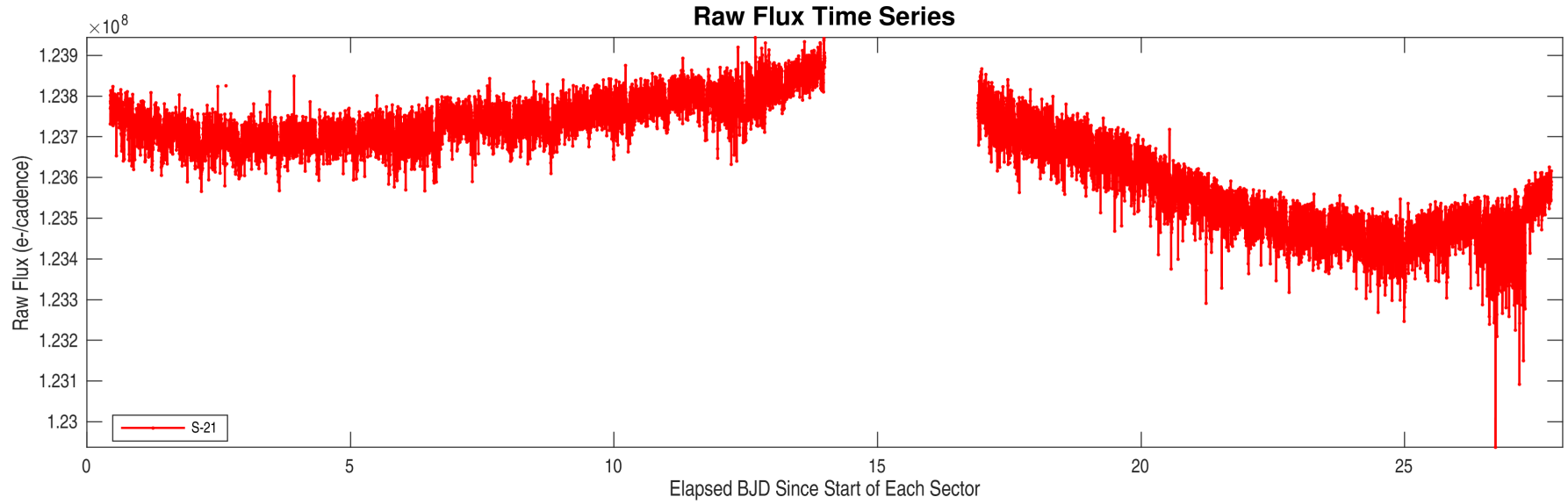


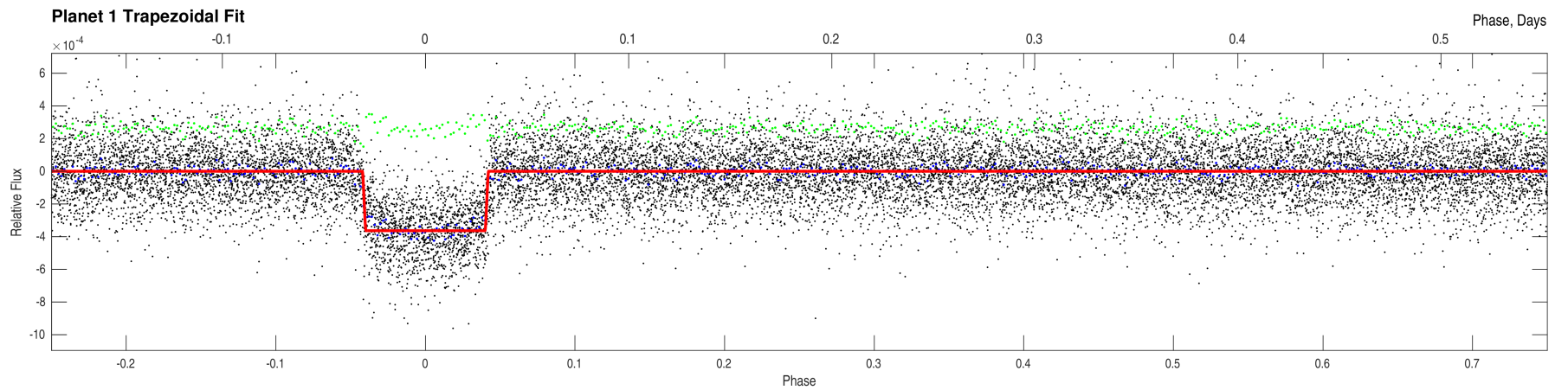
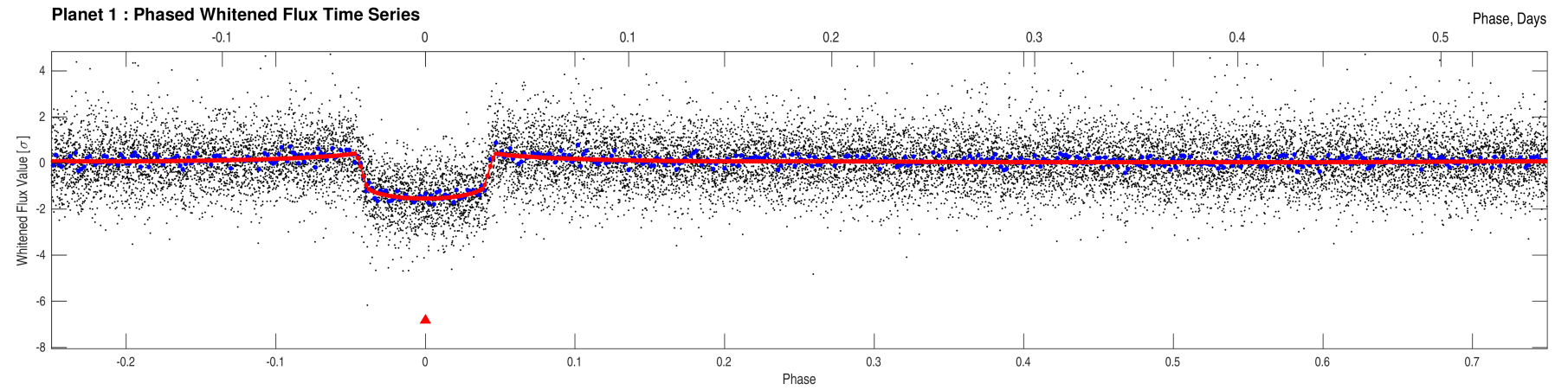
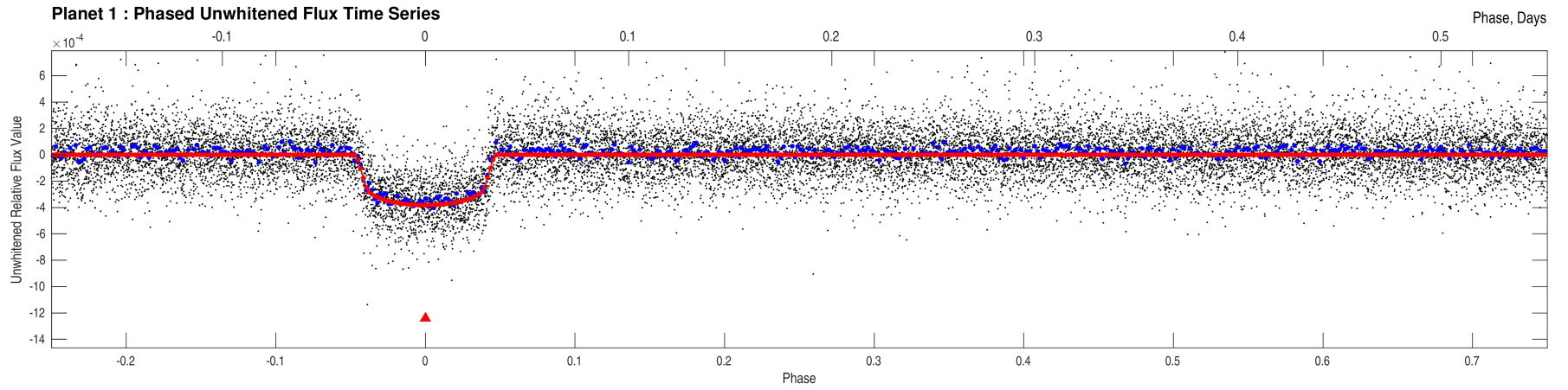
Planet Candidate 1



Offsets Relative to TIC Position

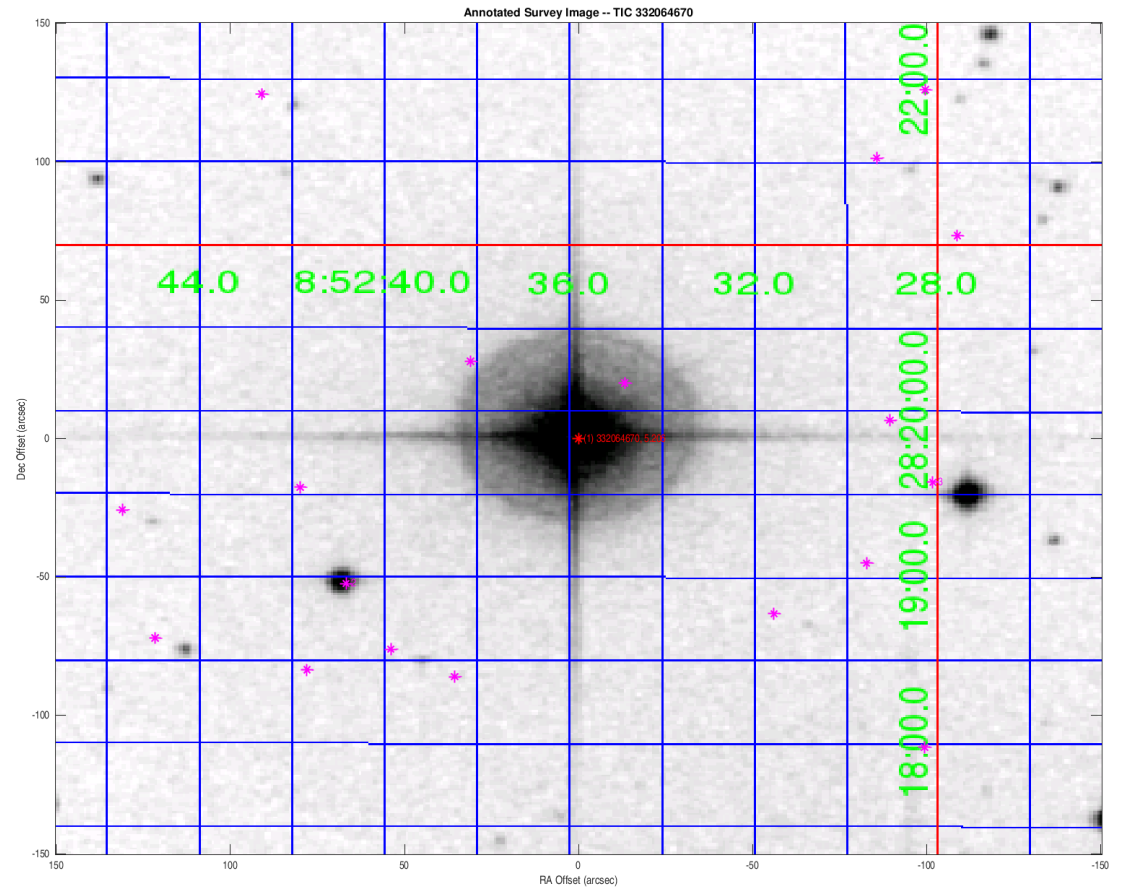






Stellar Distance Table

Index	TIC ID	TESS Mag	Distance (arcsec)
1	0000000332064670	5.21	0.00
2	0000000332064684	10.33	84.87
3	0000000332064678	10.51	102.96



Distances are corrected for proper motion. This table may not contain all of the objects shown.